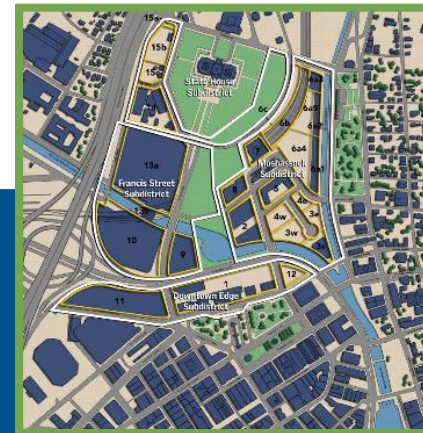


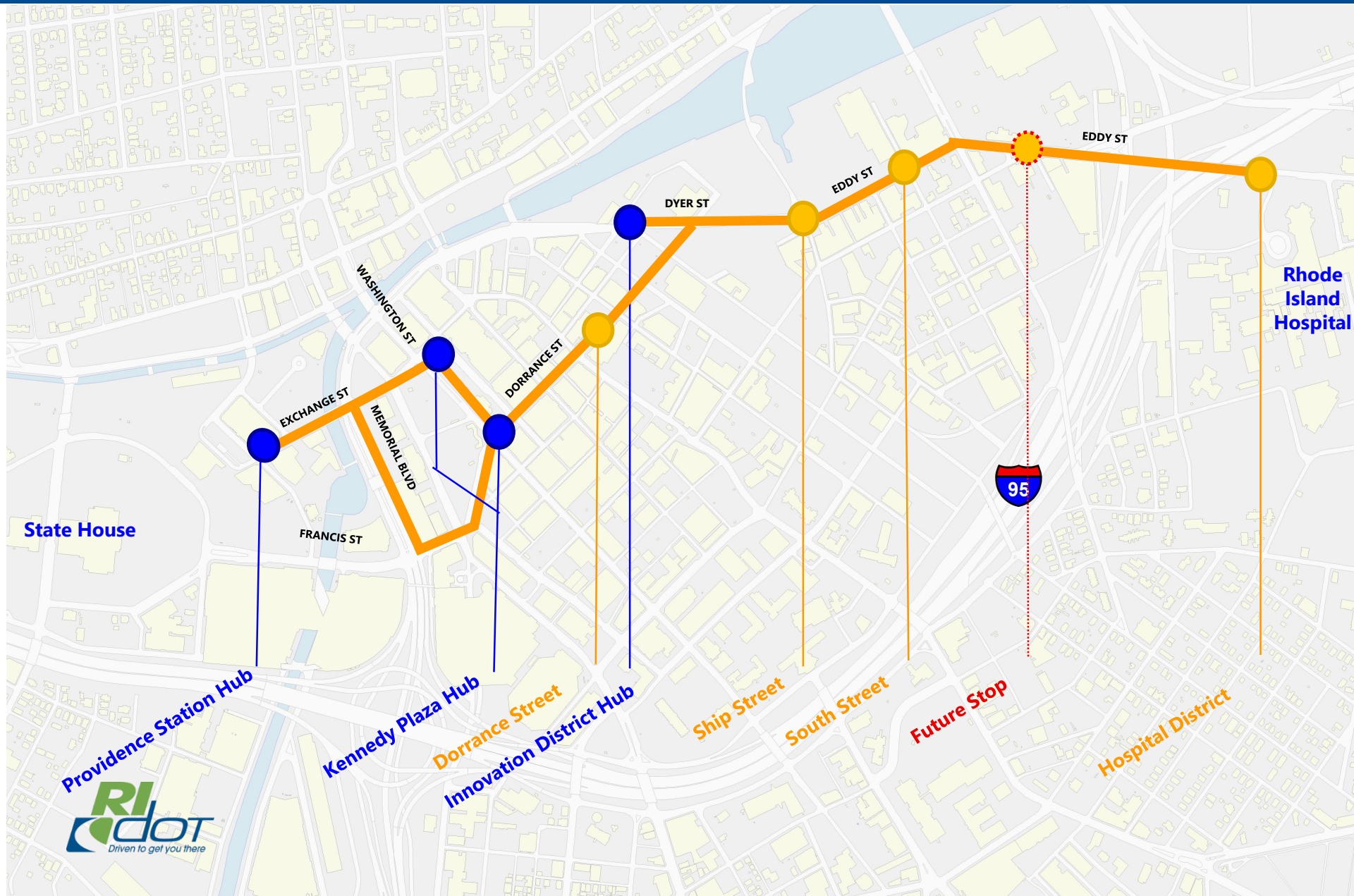


Providence Multi-Hub Bus System

November 5, 2020



Providence Multi-Hub Bus System



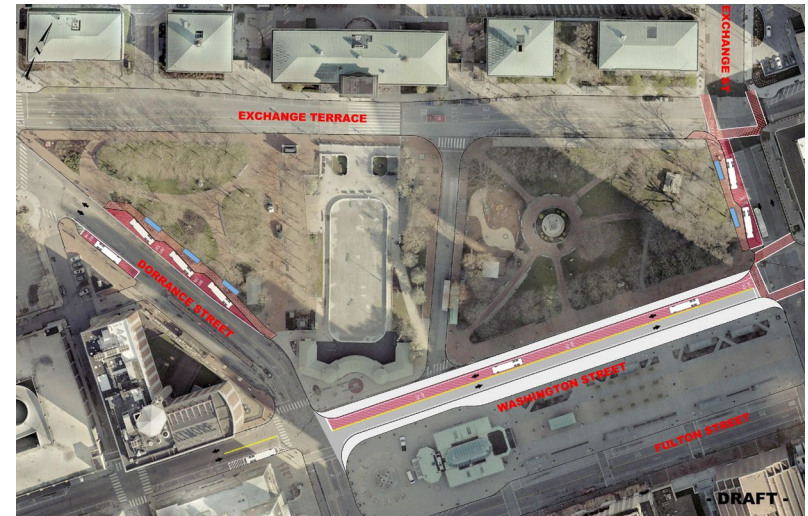
Innovation District Bus Hub

- 8 Bus Berths on National Grid Site located on Dyer Street
- Renovate existing historical structure to be used for RIPTA amenities and National Grid innovation hub/office space on other floors
- Will be built in phases.



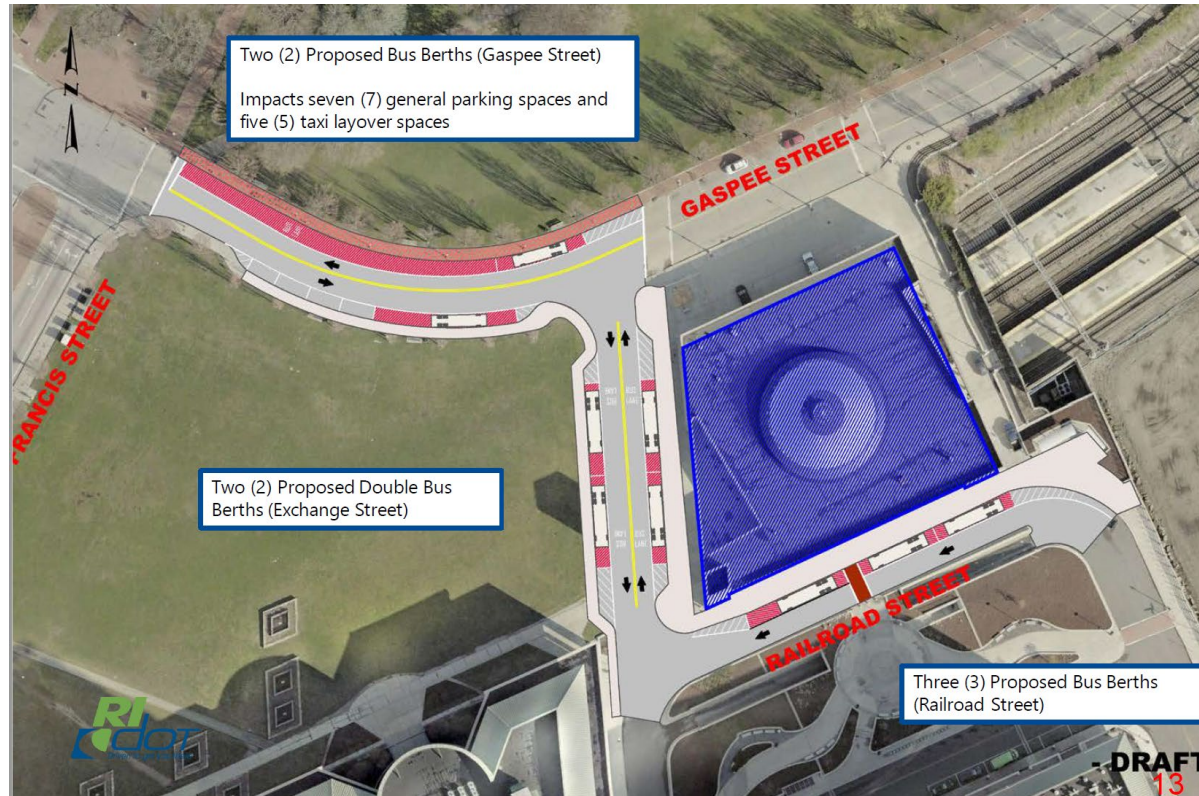
Kennedy Plaza Bus Hub

- 6 Bus Berths with stops on Dorrance and Exchange Streets
- Washington Street with cars only eastbound/buses only westbound
- Traffic improvements in the surrounding area to accommodate the change in traffic patterns.
- Open space opportunities available for the City of Providence



Providence Train Station Bus Hub

- 8 Bus Berths with stops on Exchange and Railroad Streets
- New and improved bus and rail passenger amenities in the renovated train station



- Multi-hub plan presented to stakeholders, received feedback and made adjustments
- Presented revised plan to the public and began stakeholder engagement:
 - Providence Chamber of Commerce, RI Foundation, Providence Foundation, GrowSmart RI, 195 Commission, GSA and Judge McConnell, Brown, JWU, Riders Alliance, Jewelry District Neighborhood Association, Press, Amtrak, Providence City Council and others
- Continue dialogue with National Grid
- Took public comment at RIPTA Board meeting
- Took comment and spoke with stakeholders
- RIDOT spoke at a Providence City Council Urban Redevelopment, Renewal and Planning Committee hearing
- RIDOT & RIPTA presenting at another RIPTA Board Meeting and attending the Providence City Council Urban Redevelopment, Renewal and Planning Committee hearing
 - Public comment received at both meetings

Garrahy Courthouse Parking Garage Facility:




- Location of 8 bus berths and amenities are limited by available space
- First floor of parking garage was created with structural wall that would require renovation to existing structure
- Parking garage structure itself has a base slab to accommodate passenger cars and not the load from buses
- Would need additional property such as 101 Friendship Street parking lot, on street parking for additional berths, and displacement of first floor parking spots in the garage
- Traffic safety concerns from having bus and car use the garage
- Traffic safety concerns on Friendship & Clifford Streets

Mixed Use Proposal at Dorrance Street and Clifford Street:

- Proposed mixed use building has an estimated cost of over \$60 million dollars and the proposal did not include a viable funding source
- Proposal on property not owned by the proposing parties
- Property owner was not supportive of the proposal and unwilling to participate in its construction
- No private sector partner interest was identified in the proposal
- RI Commerce assessment of the market for uses identified in this proposal are not viable in the current economic climate

Passenger Trip Transfer Assessment

- In 2018, RIPTA bus routes serving downtown Providence served 48,009 passengers per weekday. Of those, 41,061 (85%) do not transfer. For the 15% who do:

	Existing (pax. trips)	Proposed (pax. trips)
1-seat ride 	85% 41,061 <i>(includes 11 on 31-56 interline)</i>	85% 40,984 <i>Includes 27 on 20-56 and 32-57 interlines</i>
2-seat ride 	15% 6,948	14% 6,578
3-seat ride 	0% 0	1% 447

Note: Transfer rates presented here are based on RIPTA's transfer tickets. When all transfers are included, such as those made by pass users, the transfer rates are approximately 29%

- Bring employees closer to jobs while eliminating crowding experienced by having one hub
 - Lessons learned from COVID-19 regarding having high concentrations of people at one location mitigated by having a 3-hub system.
- The system will link major existing and future employment and residential centers such as:
 - Wexford, Garrahy Courthouse, Johnson and Wales University, Brown School of Professional Studies, City Hall, Convention Center, Federal courthouses, Financial district, Capitol Hill employees, Commuters to Boston, Providence Place Mall, and area restaurants.
- Lays the groundwork for transit-oriented development opportunities within the Innovation District.
- Creates the opportunity for the City of Providence to reimagine the central park system and recreate Kennedy Plaza, Burnside Park, and Biltmore Park into a centerpiece for pedestrian activity in the City of Providence.
- Opens up pedestrian linkages to the river walks, East Side, and Newport/Bristol ferry.
- The hubs will be designed to provide amenities including restrooms, indoor waiting areas with real time boards, benches, ticket vending machines, bike racks, and bike/scooter share areas at Innovation District and Providence Train Station hubs.
- Direct bus to rail connections linking downtown employment centers.
- It is not feasible to provide the necessary charging infrastructure needed for a modern electric bus fleet at one central location like Kennedy Plaza. The Multi-Hub system layout provides the ability to accommodate adequate bus charging stations distributed among the three hubs.

Schedule	Milestone
July – October 2020	Complete Stakeholder Outreach
July – December 2020	Finalize Site Details with National Grid
October 2020	Issue SOW for Design Services
October 2020	Begin Title VI Analysis for Bus Operations
November 2020	Design Services Begins
Winter 2020 / Spring 2021	Public Meetings for Title VI and RIGL Requirements
Spring 2021	Design Services Complete Construction Contract Advertised
Summer 2021	Construction Start Innovation District Site
Fall 2021	Construction Start Kennedy Plaza
Spring 2022	Construction Start PVD Station
Summer 2023	Construction Complete All 3 Sites

- Finalized operations planning on the minor bus shifts/rerouting
- Initiate Title VI Analysis
- Conduct public hearings on bus route alterations in accordance with state law
- Continue coordination with City and its consultant on Kennedy Plaza planning, as part of the Unified Vision for Downtown Public Spaces
- Issue scope of work to begin engineering design