

# Quarterly Report

## April - June 2023



July 30, 2023



## Statutory Reporting Requirements

The RhodeWorks plan to repair roads and bridges was approved by the Rhode Island General Assembly and signed into law by Governor Gina M. Raimondo on February 11, 2016. The legislation (2016-H 7409Aaa, 2016- S 2246Aaa) creates a funding source that will allow the Rhode Island Department of Transportation (RIDOT) to repair more than 150 structurally deficient bridges and make repairs to another 500 bridges to prevent them from becoming deficient, bringing 90 percent of the State's bridges into structural sufficiency by 2025. Incorporated into the new legislation are the following reporting requirements: Statutory Reporting Requirements

RIGL 42-13.1-16. Reporting. – The department shall submit to the office of management and budget, the house fiscal advisor, and the senate fiscal advisor, a report on the progress of implementation of this chapter within thirty (30) days of the close of each of the fiscal quarters of each year. The reports shall also be posted on the department's website. The reports shall include, at a minimum:

- (1) Construction and design contracts of five hundred thousand dollars (\$500,000) or greater planned to be advertised in the upcoming federal fiscal year, their value and expected award date;
- (2) Construction and design contracts of five hundred thousand dollars (\$500,000) or greater awarded in the prior federal fiscal year, date of award, value, and expected substantial completion date;
- (3) Expected final cost of:
  - (i) Any construction contracts of five hundred thousand dollars (\$500,000) or greater that reached substantial completion in the prior federal fiscal year; and
  - (ii) Any design contracts of five hundred thousand dollars (\$500,000) or greater completed in the prior federal fiscal year; and
- (4) Total number of workers employed through the contract and the number of the workers in that total with a Rhode Island address.
- (5) This report shall also include a current list of all federal, discretionary, and any other grants that the department has applied for and the status of that application and identify any changes from the prior report. For any grants that require a state match, the department shall identify if the source for the state's match is available under currently authorized funding.



Department of Transportation  
Two Capitol Hill  
Providence, RI 02903

Office 401-222-2450  
Fax 401-222-3905

Dear Ms. Reynolds-Ferland, Messrs. Whitney and Daniels:

RIDOT is pleased to submit the FFY 2023 Q3 RhodeWorks quarterly report.

It's been another memorable and productive quarter for RIDOT as we continue to improve Rhode Island's transportation system. Paving remained one of our key focuses this quarter. Kicking off the 2023 construction season on April 13, RIDOT joined Governor McKee, the Congressional Delegation, and other federal, state, and local officials to break ground for the I-95 Resurfacing Project in southern Rhode Island. RIDOT is in its second year of investing nearly \$500 million in paving projects, made possible by President Biden's Infrastructure Investment and Jobs Act. The \$19.3 million project will resurface I-95 from the Connecticut state line in Hopkinton to the Baker Pines Bridge in Richmond, covering nearly 18 miles of interstate highway.

We also made significant progress on some of our largest projects this quarter. On the I-95 Viaduct Northbound Project in Providence, we successfully opened a new bridge from I-95 North to Route 146. With traffic now flowing smoothly on the new structure, we will build a portion of a new collector-distributor in the footprint of the old Route 146 bridge. This new roadway now will be adjacent to I-95 North and is projected to open by the end of the year. It will separate all on-and off-ramp traffic between Atwells Avenue and the State Offices and will improve safety, maximize traffic efficiency, solve chronic congestion problems, and reduce vehicle emissions.

Another highlight this quarter, which also took place in Providence, was a successful weekend-long leveling and paving operation for a section of Route 6 where it merges with Route 10. This involved closing Route 6 at the Route 6/10 Interchange and diverting traffic to other major highways to avoid excessive congestion and lengthy travel delays. We completed our work 16 ½ hours ahead of schedule, and our extensive outreach efforts successfully diverted 40 percent of the traffic, meaning traffic delays were minimal.

On June 23, RIDOT kicked off its eighth Providence-Newport Ferry season with a press event that included Governor McKee and other dignitaries. RIDOT launched the ferry back in 2016 to serve as an affordable, alternative mode of transportation between the two cities. Its service not only supports tourism, but also helps to decrease traffic congestion and reduce vehicle emissions. Last year, a quarter-million passengers were served by the ferry, and this year we're looking forward to a banner year as transit ridership returns to pre-pandemic levels.

RIDOT closed out the quarter on a high note. We received a \$25 million Rebuilding American Infrastructure with Sustainability and Equity (RAISE) Grant for the third and final phase of improvements along Route 37, a critical urban freight corridor connecting interstates 95, 295, and Route 1 (Post Road). Estimated to cost \$100 million, it includes the rehabilitation, replacement, or elimination of eight bridges. At Post Road, the project includes a replacement of a deficient bridge with an at-grade intersection, avoiding long-term costs associated with rebuilding and maintaining the bridge while freeing approximately nine acres of land for economic development. RIDOT has received more than \$66 million in grants for Route 37.

Heading into the fourth quarter, more than 95 percent of projects are on time and on budget. It's a clear sign RIDOT remains a diligent and careful steward of transportation funding as it provides Rhode Islanders with the safest and most efficient transportation system possible.

Sincerely,

Peter Alviti Jr., P.E.  
Director

**Key Accomplishments**

Key Accomplishments .....	5
---------------------------	---

**Statutory Requirements**

Statutory Requirements .....	6
------------------------------	---

**Operations**

Bridge Condition .....	16
Pavement Program .....	17
Safety .....	22
Maintenance and Operations .....	24
Transit Operations .....	25
Stormwater .....	26

**Projects**

Project Performance .....	28
FFY 2022 Capital Program .....	29
FFY 2023 Capital Program .....	30
FFY 2021, 2022, and 2023 Non-Capital Projects .....	31
Special Projects .....	33

**Financials**

Expenditures .....	38
Construction Contract Awards .....	41

**Appendices**

Glossary .....	42
----------------	----

<b>Insert A: Project Budgets and Schedules .....</b>	<b>A-1</b>
--	------------

## Key Accomplishments

### Planning/Project Management

- **RAISE Grant for Right-Sizing Route 37: Improving Community Connectivity** – RIDOT was awarded \$25 million with Rebuilding American Infrastructure with Sustainability and Equity (RAISE) Grant. The project will fund multimodal improvements on Route 37 between I-295 (Cranston) and Post Road (Warwick). The project includes a replacement of a deficient bridge with an at-grade intersection and frees up nine acres of land for economic development.

### Safety

- **National Work Zone Awareness Week (April 17-21)** – In April, RIDOT Director Peter Alviti, Jr. and State Police Colonel Darnell S. Weaver joined officials from the Federal Highway Administration, AAA Northeast, the New England Laborers' Health and Safety Fund, and the Rhode Island Building and Construction Trades for a press conference at the Department's headquarters in Providence. The message related from each speaker was direct, simple, and clear – a new construction season means drivers will encounter dozens of new work zones across the state. When they do, they need to slow down and move over wherever possible to provide a margin of safety for the dedicated workers on our roads.

### Project Management

- **2023 Construction Season** – Kicking off the 2023 construction season on April 13, RIDOT joined Governor McKee, the Congressional Delegation, and other federal, state, and local officials to break ground for the I-95 Resurfacing Project in southern Rhode Island. The \$19.3 million project will resurface I-95 from the Connecticut state line in Hopkinton to the Baker Pines Bridge in Richmond, covering nearly 18 miles of interstate highway.
- **Providence Viaduct Northbound Project** – RIDOT successfully opened a new bridge from I-95 North to Route 146. This new roadway now will be adjacent to I-95 North and is projected to open by the end of the year. It will separate all on- and off-ramp traffic between Atwells Avenue and the State Offices and will improve safety, maximize traffic efficiency, solve chronic congestion problems, and reduce vehicle emissions.

### Transit

- **Providence-Newport Ferry** - On June 23, RIDOT kicked off its eighth season of the Providence-Newport Ferry which serves as an affordable, alternative mode of transportation between the two cities. Its service not only supports tourism, but also helps to decrease traffic congestion and reduce vehicle emissions. Parking is freely accessible in Providence, and riders can also access the ferry via free RIPTA shuttle service.

# Statutory Requirements

## CONSTRUCTION

## FFY22 AWARDS

**STATUTORY REQUIREMENT: Construction Contracts \$500,000 or greater awarded in the prior fiscal year, date of awards, value, and expected substantial completion date.**

## CONSTRUCTION CONTRACTS AWARDED IN FFY 2022 (Oct. 1, 2021- September 30, 2022)

Construction Contract (Project Name)	Award Date (Mon-Year)	Value (\$M)	Exp. Completion Date (Mon-Year)
<b>FFY 2022 1st Quarter - October 1, 2021 - December 31, 2021</b>			
Mileage Based Exit Renumbering C-4 I-95	Dec-21	\$ 0.9	Dec-22
SRTS - Broken Bridge Bike Path, Warren Contract 4	Dec-21	\$ 3.7	Aug-23
Intersection Safety Improvements 2019 C2	Dec-21	\$ 4.6	May-23
<b>Subtotal</b>		<b>\$ 9.3</b>	
<b>FFY 2022 2nd Quarter - January 1, 2022 - March 31, 2022</b>			
Bridge Group 42A - WAR, WW	Jan-22	\$ 2.9	Jul-23
Route 146 Guide Signs C-2 (readvertised)	Jan-22	\$ 5.9	Jun-24
HSIP - Intersection & Crosswalks Central-South - 2022	Feb-22	\$ 2.8	Jul-23
Improvements to East Shore Expressway (Rt. 144 to US-6)	Mar-22	\$ 8.0	Apr-23
Bridge Group 69E - Hunts Mills	Mar-22	\$ 5.5	Oct-23
Rt 138A - Aquidneck Ave (E Main Rd - Green End Ave)	Mar-22	\$ 5.0	Aug-23
Route 146 Reconstruction	Mar-22	\$ 167.4	Aug-26
<b>Subtotal</b>		<b>\$ 197.5</b>	
<b>FFY 2022 3rd Quarter - April 1, 2022 - June 30, 2022</b>			
Bridge Group 51B-RT 37 C-3	Apr-22	\$ 65.3	Jun-26
HSIP Statewide Intersection & Crosswalk Improvement East Bay 2021	Apr-22	\$ 2.4	Jun-23
HSIP - High Risk Rural Roads Improvements 2021	Apr-22	\$ 2.0	Jul-23
2022 Paver Placed Surface Treatment C-1	Apr-22	\$ 2.2	Nov-22
2022 Rubberized Asphalt Chip Seal C-1	Apr-22	\$ 1.5	Jun-23
Bridge Group 39 - Rt 146	May-22	\$ 26.6	Sep-24
Airport Connector and Post Road Resurfacing	May-22	\$ 8.5	Oct-23
Bridge Group 13B - RT 146 C-2	May-22	\$ 3.2	Dec-23
Pawtucket Central Falls Transit Center Parking Lot	Jun-22	\$ 4.4	Dec-22
Providence Station State of Good Repairs and Capacity	Jun-22	\$ 20.7	Dec-25
RI-14, RI-117, RI-138 & Fairview	Jun-22	\$ 2.4	May-23
<b>Subtotal</b>		<b>\$ 139.1</b>	
<b>FFY 2022 4th Quarter - July 1, 2022 - September 30, 2022</b>			
US-6, RI-94, Reynolds and East Road	Jul-22	\$ 11.3	Jun-23
Boston Neck Rd & South County Trail	Jul-22	\$ 20.5	Jun-24
Interstate Resurfacing (I-95 and I-295)	Jul-22	\$ 29.3	Jun-24
Bridge Group 37 - Mendon Rd	Aug-22	\$ 11.6	May-25
Davisville RR Bridge	Aug-22	\$ 6.4	Dec-24
Barrington and Warren Bike Path Bridges	Sep-22	\$ 18.0	Jun-26
Salt Storage Facility Newport	Sep-22	\$ 3.1	Jun-24
2022 Crack Sealing - Statewide C-1	Sep-22	\$ 1.3	Nov-22
<b>Subtotal</b>		<b>\$ 101.5</b>	
<b>TOTAL</b>		<b>\$ 447.4</b>	

**Note:** Value = the total construction value, except for design/build projects.

**STATUTORY REQUIREMENT: Expected final cost of Construction Contracts \$500,000 or greater that reached substantial completion in the prior fiscal year, and the total number of workers employed through the contract and the number of workers in that total with a Rhode Island address.**

#### CONSTRUCTION CONTRACTS AT SUBSTANTIAL COMPLETION IN FFY 2022 (Oct. 1, 2021 - September 30, 2022)

Construction Contract (Project Name)	Completion Date (Mon-Year)	Expected Final Contract Cost	Number of Workers	Number of RI Workers	% Share with RI Residence
<b>FFY 2022 1st Quarter - October 1, 2021 - December 31, 2021</b>					
Bridge Group 57J - Browning Mill Bridge and Culverts	Oct-21	\$ 0.6	35	27	77%
STC I-295 SB at Bald Hill Rd	Oct-21	\$ 1.3	43	25	58%
2021 Paver Placed Elastomeric Surface Treatment C-1	Oct-21	\$ 3.2	41	31	76%
HSIP - Signalization of Allens Ave. C-5	Nov-21	\$ 3.1	25	21	84%
Bridge Group 03 - I-95 PAW	Nov-21	\$ 10.3	20	13	65%
I-195 Relocation C-19 Park & Bridge Completion	Nov-21	\$ 0.5	51	28	55%
Bridge Group 17 - BUR, CUM, LIN, NPR, NSN, SMI	Dec-21	\$ 4.0	39	27	69%
<b>Subtotal</b>		<b>\$ 23.0</b>			
<b>FFY 2022 2nd Quarter - January 1, 2022 - March 31, 2022</b>					
Bridge Group 54A - I-95 Kingston Rd	Jan-22	\$ 14.6	177	97	55%
HSIP Crosswalk & Signal Improvements 2020	Feb-22	\$ 1.4	9	8	89%
HSIP - Crosswalk and Sign Enhancements	Feb-22	\$ 1.5	36	21	58%
<b>Subtotal</b>		<b>\$ 17.5</b>			
<b>FFY 2022 3rd Quarter - April 1, 2022 - June 30, 2022</b>					
2021 Rubberized Asphalt Chip Seal C-1	Apr-22	\$ 1.2	27	14	52%
HSIP Intersection Safety Improvements - Route 37 and Natick Ave	May-22	\$ 2.1	36	19	53%
Bridge Group 03T-6 - I-95 PAW	May-22	\$ 21.0	41	19	46%
Bridge Group 01 - PVD	May-22	\$ 20.1	201	126	63%
HSIP Intersection Safety Rt 6 & 7	May-22	\$ 2.5	66	35	53%
HSIP Roadway Departure Mitigation 2021	Jun-22	\$ 0.9	22	14	64%
<b>Subtotal</b>		<b>\$ 47.8</b>			
<b>FFY 2022 4th Quarter - July 1, 2022 - September 30, 2022</b>					
Bridge Group 59A - Park Ave RR	Aug-22	\$ 6.9	133	74	56%
<b>Subtotal</b>		<b>\$ 6.9</b>			
<b>TOTAL</b>		<b>\$ 95.2</b>	<b>1,002</b>	<b>599</b>	<b>59.8%*</b>

RIDOT is increasing efforts to ensure contractor compliance with Rhode Island Jobs reporting requirements.

**Data sources:** Monthly RIDOT Executive Summary Reports submitted by Turino, and the PRISM Compliance Management (PRISM) Database, and current contract amounts as of 12/31/22

**Note:** RIDOT Continues to monitor costs post-substantial completion -- the construction value will be adjusted to reflect construction expenses related to punch lists and final close-out activities.

\*Grand totals are not based off unique person(s) data. If an individual worked on multiple projects, they are counted under each.

## CONSTRUCTION

## FFY24 PLANNED ADVERTISED

**STATUTORY REQUIREMENT: Construction Contracts \$500,000 or greater planned to be advertised in the upcoming federal fiscal year, their value, and expected award date.**

## CONSTRUCTION CONTRACTS PLANNED TO BE ADVERTISED IN FFY 2024 (Oct. 1, 2023 - September 30, 2024)

Construction Contract (Project Name)	Expected Advertise Date	Construction Value (\$M)
<b>FFY 2024 - October 1, 2023 - September 30, 2024</b>		
2024 Crack Sealing C-1	FFY 24	\$ -
2024 Paver Placed Elastomeric Surface Treatment C-1	FFY 24	\$ -
2024 Rubberized Asphalt Chip Seal - C-1	FFY 24	\$ -
Bridge Group 02 - Foster	FFY 24	\$ -
Bridge Group 04_R - I-95/RT 10	FFY 24	\$ -
Bridge Group 17A - I-295 Diamond Hill	FFY 24	\$ -
Bridge Group 17C - Newell and Sneece	FFY 24	\$ -
Bridge Group 42C - Green Bridges	FFY 24	\$ -
Bridge Group 44_H - Nonquit	FFY 24	\$ -
Bridge Group 97 - Warwick Corridor	FFY 24	\$ -
Corridor - Route 7	FFY 24	\$ -
HSIP - Intersection & Crosswalk - 2024	FFY 24	\$ -
HSIP - Roadway Departure 2024 C-1	FFY 24	\$ -
Pavement Improvements - East Main Rd	FFY 24	\$ -
Pavement Improvements - Hartford Ave C-3	FFY 24	\$ -
Pavement Improvements - JAM (Resiliency)	FFY 24	\$ -
Pavement Improvements - LCM, TIV	FFY 24	\$ -
Pavement Improvements - School St	FFY 24	\$ -
<b>TOTAL</b>		<b>\$ 650.7</b>

## DESIGN

## FFY22 AWARDS

**STATUTORY REQUIREMENT: Expected final cost of Design Contracts \$500,000 or greater awarded in the prior fiscal year, date of awards, value, and expected substantial completion date.**

## DESIGN CONTRACTS AWARDED IN FFY 2022 (Oct. 1, 2021 - September 30, 2022)

Design Contract (Project Name)	Award Date (Mon-Year)	Value (\$M)	Exp. Completion Date (Mon-Year)
<b>FFY 2022 1st Quarter - October 1, 2021 - December 31, 2021</b>			
*	*	\$ -	*
<b>Subtotal</b>		<b>\$ -</b>	
<b>FFY 2022 2nd Quarter - January 1, 2022 - March 31, 2022</b>			
On-Call Engineering Services for Traffic Design Task Order	Jan-22	\$ 1.8	Jan-25
On-Call Engineering Services for Traffic Design Task Order	Jan-22	\$ 1.8	Jan-25
On-Call Engineering Services for Traffic Design Task Order	Jan-22	\$ 1.8	Jan-25
<b>Subtotal</b>		<b>\$ 5.3</b>	
<b>FFY 2022 3rd Quarter - April 1, 2022 - June 30, 2022</b>			
On-Call Infrastructure Maintenance and Bridge Engineering Support Consultant Services	Apr-22	\$ 0.5	Mar-25
<b>Subtotal</b>		<b>\$ 0.5</b>	
<b>FFY 2022 4th Quarter - July 1, 2022 - September 30, 2022</b>			
Pavement Preservation, Resurfacing and Highway Improvement Eng Services Program 4	Sep-22	\$ 3.0	Aug-25
<b>Subtotal</b>		<b>\$ 3.0</b>	
<b>TOTAL</b>		<b>\$ 8.8</b>	

**STATUTORY REQUIREMENT: Expected final cost of Design Contracts \$500,000 or greater that reached substantial completion in the prior fiscal year, and the total number of workers employed through the contract and the number of workers in that total with a Rhode Island address.**

**DESIGN CONTRACTS COMPLETED IN FFY 2022 (Oct. 1, 2021 - September 30, 2022)**

Design Contract (Project Name)	Completion Date (Mon-Year)	Expected Final Contract	Number of Workers	Number of RI Workers	% Share with RI Residence
<b>FFY 2022 1st Quarter - October 1, 2021 - December 31, 2021</b>					
Pavement Preservation Program - Contract 3	Oct-21	\$ 1.16	N/A	N/A	N/A
Pavement Preservation Program - Contract 4	Oct-21	\$ 1.59	N/A	N/A	N/A
Professional Consultant Services And Its Technical Support - TMC	Oct-21	\$ 9.12	N/A	N/A	N/A
On-Call Transportation Eng. Services- Bridge/ Routine C-4	Oct-21	\$ 0.79	N/A	N/A	N/A
Design Build On-Call Transportation Eng. Services - Bridge/ Routine C-1	Dec-21	\$ 0.70	N/A	N/A	N/A
On-Call Transportation Eng. Services - Bridge/ Routine C-3 Design-Build	Dec-21	\$ 0.99	N/A	N/A	N/A
Design Build/Construction PTSID #0032B On-Call Transportation Eng. Services- Bridge/ Routine C-4	Dec-22	\$ 0.65	N/A	N/A	N/A
On-Call Transportation Engineering Services Task Order Work Program - Pvmt/Improv	Dec-21	\$ 0.59	N/A	N/A	N/A
<b>Subtotal</b>		<b>\$ 15.60</b>			
<b>FFY 2022 2nd Quarter - January 1, 2022 - March 31, 2022</b>					
Design Build On-Call Transportation Eng. Services - Bridge/ Routine C-1	Jan-22	\$ 1.75	N/A	N/A	N/A
Design-Build On-Call Transportation Eng. Services - Bridge/ Routine C-7	Jan-22	\$ 1.95	N/A	N/A	N/A
<b>Subtotal</b>		<b>\$ 3.70</b>			
<b>FFY 2022 3rd Quarter - April 1, 2022 - June 30, 2022</b>					
Comp Br Imp Program - Group 3	Apr-22	\$ 24.42	N/A	N/A	N/A
Replacement Of Jamestown Bridge	May-22	\$ 2.03	N/A	N/A	N/A
On-Call Hsp Final Design Consultant Services	May-22	\$ 1.00	N/A	N/A	N/A
On-Call Transportation Eng. Services - Bridge/ Complex C-3	May-22	\$ 1.53	N/A	N/A	N/A
Design-Bid On-Call Transportation Eng. Services - Bridge/ Complex C-3	May-22	\$ 1.75	N/A	N/A	N/A
Design-Bid On-Call Transportation Eng. Services - Bridge/ Complex C-3	May-22	\$ 4.00	N/A	N/A	N/A
On-Call Transportation Eng. Services - Bridge/ Complex C-4	May-22	\$ 1.15	N/A	N/A	N/A
On-Call Transportation Eng. Services - Bridge/ Complex C-4	May-22	\$ 0.55	N/A	N/A	N/A
Design Build On-Call Transportation Eng. Services - Bridge/ Routine C-1	May-22	\$ 0.89	N/A	N/A	N/A
Design Build On-Call Transportation Eng. Services - Bridge/ Routine C-1	May-22	\$ 0.56	N/A	N/A	N/A
On-Call Transportation Eng. Services - Bridge/ Routine C-2	May-22	\$ 0.77	N/A	N/A	N/A
On-Call Transportation Eng. Services - Bridge/ Routine C-3	May-22	\$ 0.79	N/A	N/A	N/A
On-Call Transportation Eng. Services - Bridge/ Routine C-3	May-22	\$ 1.45	N/A	N/A	N/A
On-Call Transportation Eng. Services- Bridge/ Routine C-4	May-22	\$ 0.68	N/A	N/A	N/A
On-Call Transportation Eng. Services - Bridge/ Routine C-5	May-22	\$ 0.56	N/A	N/A	N/A
Design Build On-Call Transportation Eng. Services - Bridge/ Routine C-6	May-22	\$ 0.98	N/A	N/A	N/A
On-Call Transportation Eng. Services - Bridge/ Routine C-7	May-22	\$ 0.57	N/A	N/A	N/A
Design-Build On-Call Transportation Eng. Services - Bridge/ Routine C-7	May-22	\$ 1.31	N/A	N/A	N/A
Design-Build On-Call Transportation Eng. Services - Bridge/ Routine C-7	May-22	\$ 0.98	N/A	N/A	N/A
Design Build On-Call Transportation Eng. Services - Bridge/ Simple C-3	May-22	\$ 1.48	N/A	N/A	N/A
<b>Subtotal</b>		<b>\$ 47.43</b>			
<b>FFY 2022 4th Quarter - July 1, 2022 - September 30, 2022</b>					
On-Call Transportation Eng. Services - Bridge/ Routine C-3	Aug-22	\$ 0.88	N/A	N/A	N/A
Design-Build On-Call Transportation Eng. Services - Bridge/ Routine C-7	Aug-22	\$ 0.82	N/A	N/A	N/A
Design-Build On-Call Transportation Eng. Services - Bridge/ Routine C-8	Aug-22	\$ 0.95	N/A	N/A	N/A
Design Build On-Call Transportation Eng. Services - Bridge/ Routine C-6	Sep-22	\$ 0.95	N/A	N/A	N/A
On-Call Transportation Eng. Services - Bridge/ Routine C-8	Sep-22	\$ 0.53	N/A	N/A	N/A
Design-Build On-Call Transportation Eng. Services - Bridge/ Routine C-8	Sep-22	\$ 0.70	N/A	N/A	N/A
<b>Subtotal</b>		<b>\$ 4.84</b>			
<b>TOTAL</b>		<b>\$ 71.56</b>			

**Note:** RIDOT does not currently collect full employment and payroll information from contractors and subcontractors on design contracts as this was not a legislated requirement prior to RhodeWorks. As such, RIDOT does not currently have sufficient information about the number of unique employees per project or employee state of residence. RIDOT is developing a methodology to capture this information in the future.

Data sources: RIDOT Financial Management System

**STATUTORY REQUIREMENT:** Design Contracts \$500,000 or greater planned to be advertised in the upcoming federal fiscal year, their value and expected award date.

DESIGN CONTRACTS PLANNED TO BE ADVERTISED IN FFY 2024 (Oct. 1, 2023 - September 30, 2024)

Design Contract (Project Name)	Advertise Date (Mon-Year)	Award Date (Mon-Year)	Value (\$M)	Exp. Completion Date (Mon-Year)
<b>FFY 2024 - October 1, 2023 - September 30, 2024</b>				
Pavement Preservation, Resurfacing and Highway Improvement Eng Services Program 5	FFY24	Sep-24	\$ 18.0	Aug-27
Vertical Construction & Facilities Task Order	FFY24	Oct-24	\$ 4.0	Sep-27
<b>TOTAL</b>			<b>\$ 22.0</b>	

**Note:** At this time, the planning of FFY 2024 Design contracts are in process. Anticipated contract advertisements will be identified in upcoming quarterly reports upon finalization.

**PLANNING**
**GRANTS**

**STATUTORY REQUIREMENT:** All federal, discretionary and any other grants that the department has applied for and the status of that application and identify any changes from the prior report. For any grants that require a state match, the department shall identify if the source for the state's match is available under currently authorized funding.

**GRANT APPLICATIONS (FFY 2016 - Present)**
**AWARDED**

Project Description	Project Type	Grant Source	Application Year	Grant Award (\$M)	Project Cost (\$M)	Matching Funds Available via Curr. Auth. Funding?
Pawtucket/Central Falls Commuter Rail Station Project	Transit	TIGER	FFY 2016	\$ 13.1	\$ 58.0	Yes
Route 37 Corridor Safety Sweep Project	Hwy, Bridge	TIGER	FFY 2018	\$ 20.0	\$ 72.0	Yes
Smarter, Simpler Roads for the Newport Innovation Corridor	Hwy	BUILD	FFY 2018	\$ 20.0	\$ 74.6	Yes
TF Green Airport Intercity Rail Service Preliminary Engineering	Rail	FRA	FFY 2018	\$ 2.8	\$ 14.0	Yes
Transforming the Providence I-95 Northbound Viaduct	Hwy, Bridge	INFRA	FFY 2019	\$ 60.4	\$ 265.0	Yes
Providence Station State of Good Repair and Capacity Project	Rail	FRA	FFY 2019	\$ 12.5	\$ 25.0	Yes
Uncontrolled Midblock Crosswalk Enhancement Project	Traffic Safety	AID	FFY 2019	\$ 1.0	\$ 5.0	Yes
Washington Bridge Rehab and Redevelopment Project	Hwy, Bridge	BUILD	FFY 2019	\$ 25.0	\$ 78.0	Yes
Safety and Congestion Improvements on Rt. 146	Hwy, Bridge	INFRA	FFY 2020	\$ 65.0	\$ 196.8	Yes
Final Link in the 'Missing Moves' and Quonset Connector Ramps	Planning	BUILD	FFY 2020	\$ 4.0	\$ 5.0	Yes
Opening the Cranston Canyon	Hwy, Bridge	BUILD	FFY 2020	\$ 21.3	\$ 85.0	Yes
Bridge Group 49 - Henderson	Bridge	THUD	FFY 2019	\$ 69.7	\$ 84.4	Yes
Bridge Group 04_R - Huntington and Bridge Group 32	Bridge	THUD	FFY 2020	\$ 54.3	\$ 132.8	Partial
Bridge Capital Program	Bridge	THUD	FFY 2021	\$ 63.5	N/A**	Yes
*Active Safety for Active Transportation	Traffic Safety	AID	FFY 2021	\$ 1.0	\$ 1.3	Yes
Bridge Capital Program	Bridge	THUD	FFY 2022	\$ 63.5	N/A**	Yes
Resilient Resurfacing - A Permeable Pavement Pilot	Hwy, Research	Climate	FFY2022	\$ 0.3	\$ 1.0	Yes
Bridge Capital Program	Bridge	THUD	FFY 2023	\$ 60.0	N/A**	Yes
*Revolutionary Heritage Byway - Hope Street Pedestrian and Resiliency Enhancements	Pedestrian	NSBP	FFY2022	\$ 0.8	\$ 1.8	Yes
*Right-Sizing Route 37: Improving Community Connectivity	Hwy, Bridge	RAISE	FFY2023	\$ 25.0	\$ 100.0	Yes
*Bridge Capital Program	Hwy, Bridge	THUD	FFY 2024	\$ 60.0	N/A**	Yes
*Ten Mile Greenway	Hwy, Bridge	Earmark	FFY 2024	\$ 3.0	N/A**	Yes
*Washington Secondary Bikepath	Hwy, Bridge	Earmark	FFY 2024	\$ 1.2	\$ 5.5	Yes
<b>TOTAL</b>				<b>\$ 647.3</b>	<b>\$ 1,205.1</b>	

**PENDING**

Grant Application Description	Project Type	Grant Source	Application Year	Grant Request (\$M)	Project Cost (\$M)	Matching Funds Available via Curr. Auth. Funding?
Northeast Corridor Regional Rail Plan for Rhode Island and Massachusetts	Rail	CRISI	FFY2022	\$ 3.0	\$ 3.8	Yes
*Charging Ahead: Rhode Island Working Together for Electrification	EV Charging	CFI	FFY2023	\$ 15.0	\$ 18.8	Partial
<b>TOTAL</b>				<b>\$ 18.0</b>	<b>\$ 22.5</b>	

**UPCOMING/ANTICIPATED APPLICATIONS**

Grant Application Description	Project Type	Grant Source	Application Year	Grant Request (\$M)	Project Cost (\$M)	Matching Funds Available via Curr. Auth. Funding?
I-95 'Missing Move' and Quonset Ramps Construction	Hwy, Bridge	INFRA	FFY 2023	\$ 60.0	\$ 100.5	Partial
Huntington Viaduct - Bridge Group 4R	Hwy, Bridge	MEGA or BIP	FFY 2023	\$ 220.0	\$ 550.0	Partial
Bridging the Gap: Complete Connections Across the Northeast Corridor	Planning	Reconnet.	FFY2023	\$ 5.0	\$ 6.3	Partial
Henderson Phase 3	Planning	Reconnet.	FFY 2023	\$ 5.0	\$ 6.3	Partial
<b>TOTAL</b>				<b>\$ 290.0</b>	<b>\$ 663.0</b>	

**Notes:**

- Asterisks (\*) denote grants or grant applications that are either newly added to this report or have changed status since prior report.
- Asterisk (\*\*) - THUD Appropriations are one-time discretionary awards with little advance notification
- For "pending" and "upcoming/anticipated" applications, total match requirements will be determined if/when grant is awarded.

**STATUTORY REQUIREMENT:** All federal, discretionary and any other grants that the department has applied for and the status of that application and identify any changes from the prior report. For any grants that require a state match, the department shall identify if the source for the state's match is available under currently authorized funding.

#### GRANT APPLICATIONS (FFY 2016 - Present)

##### NOT AWARDED

Grant Application Description	Project Type	Grant Source	Application Year	Grant Request (\$M)	Project Cost (\$M)	Matching Funds Available via Curr. Auth. Funding?
Route 6/10 Interchange	Hwy, Bridge	FASTLANE	FFY 2016	\$ 175.0	\$ 595.0	N/A
Route 6/10 and Interstate Route 95 Interchange Project	Hwy, Bridge	FASTLANE	FFY 2017	\$ 59.0	\$ 226.1	N/A
The Providence Viaduct Northbound Project	Hwy, Bridge	INFRA	FFY 2018	\$ 60.0	\$ 342.0	N/A
Route 6/10 Interchange Grade Separation Improvements Project	Rail	FRA	FFY 2018	\$ 8.0	\$ 69.5	N/A
Uncontrolled Midblock Crosswalk Enhancement Project	Traffic Safety	AID	FFY 2019	\$ 1.0	\$ 1.3	N/A
NEC Regional Rail Plan	Planning	FRA	FFY 2020	\$ 3.0	\$ 3.8	N/A
Rebuilding the East Avenue Corridor	Hwy, Bridge	RAISE	FFY 2021	\$ 25.0	\$ 65.0	N/A
I-95 'Missing Move' and Quonset Ramps Construction	Hwy, Bridge	INFRA	FFY 2021	\$ 60.0	\$ 100.5	N/A
Safely Rebuilding the East Avenue Corridor	Hwy, Bridge	RAISE	FFY 2022	\$ 25.0	\$ 75.0	N/A
*Completing the I-95 Missing Move and Ramps to Quonset Business Park	Hwy, Bridge	INFRA	FFY 2022	\$ 81.0	\$ 135.0	N/A
*New Technologies for Newport Streets	Traffic Safety	SMART	FFY2022	\$ 2.0	\$ 2.0	N/A
*Revitalizing the Ashton Viaduct	Hwy, Bridge	BIP	FFY2022	\$ 33.6	\$ 48.0	N/A
*Economizing Rhode Island Truck Routing	Traffic Safety	HP-ITD	FFY2023	\$ 2.0	\$ 2.0	N/A
*Bridging the Gap: Complete Connections Across the Northeast Corridor	Planning	RAISE	FFY2023	\$ 5.0	\$ 6.3	N/A

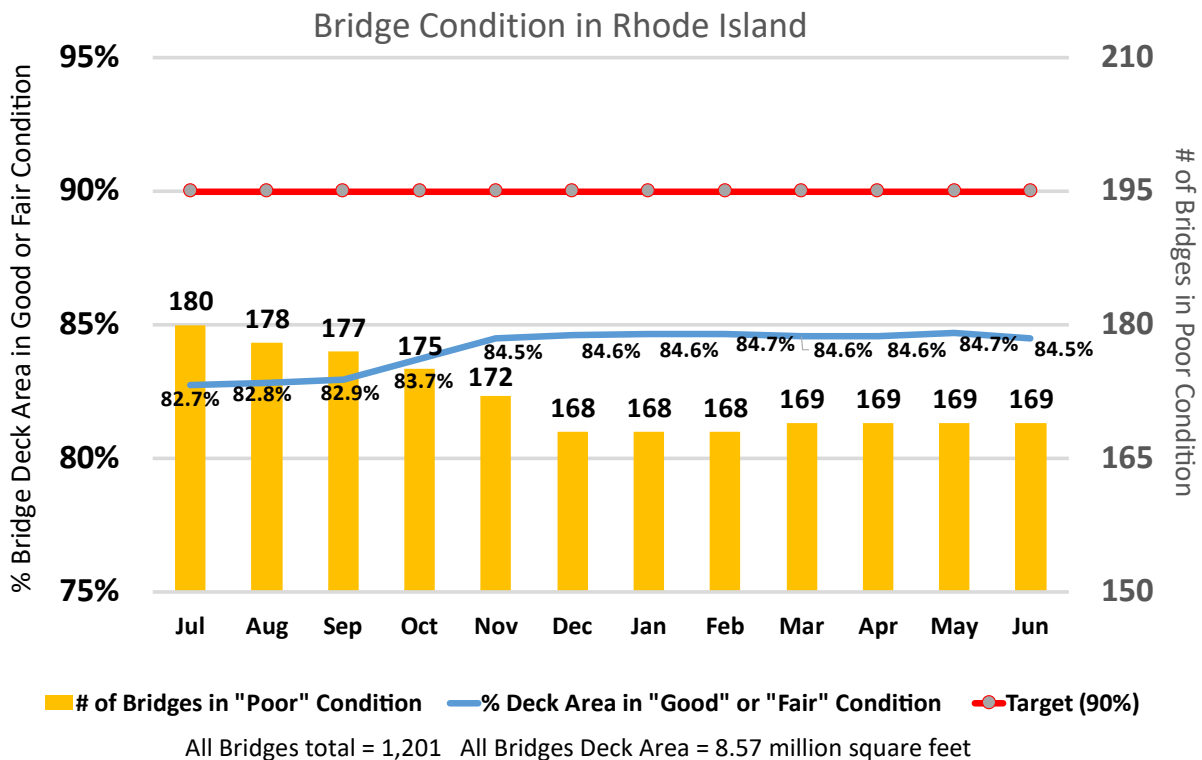
##### Notes:

- Asterisks (\*) denote grants or grant applications that are either newly added to this report or have changed status since prior report.
- Asterisk (\*\*) - THUD Appropriations are one-time discretionary awards with little advance notification
- For "pending" and "upcoming/anticipated" applications, total match requirements will be determined if/when grant is awarded.

# Operations

## Bridge Condition

In 2016, prior to RhodeWorks, Rhode Island faced a dismal 25 percent poor bridge condition rating. By June 2023, structurally deficient deck area has been reduced to 15.5 percent. The following chart details bridge conditions through the third quarter of FFY 2023.



RIDOT's Ten Year Plan calls for increased expenditures on bridge preservation activities in addition to expenditures on bridge reconstruction. As seen in the chart below, one bridge was deemed to be in poor condition upon inspection, and one was removed off the list. Therefore, the net total number of bridges in poor condition this quarter still remains at 169.

Bridges Removed from "Poor Condition" List (Repaired, Replaced, or Removed) Q3 FFY 2023		
Q2		
Jan-Mar 2023	The Smith Street Bridge 070101 which passes over I-95 NB & SB in Providence	4,914 sq ft
Subtotal		4,914 sq ft
Bridges Added to the "Poor Condition" List in Q3 FFY 2023		
Q2		
Jan-Mar 2023	The Pettaconsett Ave Bridge 061901 which passes over JEFFERSON BLVD in Warwick	23,437 sq ft
Subtotal		23,437 sq ft
Net Change		-18,523 sq ft

**Note:** The chart to the left, while generated from bridge software, is meant to solely be a list of bridges and is only one piece of the information used to generate the "Bridge Condition in Rhode Island" chart.

The Rhode Island Department of Transportation aims to maintain and provide a safe and efficient transportation network. A key component of this is ensuring that the pavement on State roads is properly managed and maintained. There are a variety of pavement treatments that can be utilized, depending on the needs of the roadway and the availability of funds. Pavement projects derive from RIDOT's pavement preservation and capital programs, and are based on strategic asset management.

**Pavement Preservation Program** - Pavement Preservation extends the service life of roadways by making a pavement surface less permeable to reduce water penetration through cracks, which weaken the foundation soils and deteriorates the pavement. Current treatments include crack sealing, asphalt rubber chip seals and thin overlays or PPEST. Pavement preservation techniques can extend the service life of the road up to ten years.

- **Crack Seal** - a relatively easy and lower-cost operation that prevents water from penetrating into the asphalt pavement to prevent further cracking, base failures, and overall deterioration of the roadway. RIDOT uses a rubberized asphalt liquid to seal joints and cracks to extend the pavement's functional life.
- **Rubberized Chip Seal** – a pavement preservation treatment that combines a 20 percent rubber modified asphalt liquid binder and an asphalt coated aggregate primarily as a flexible waterproof wearing surface. The application improves skid resistance, renews aging surfaces, fills micro-cracks, and seals and waterproofs the pavement.
- **Thin Overlay (Paver-Placed Elastomeric Surface Treatment - PPEST)** – a one inch thick, gap graded hot mix with a modified asphalt cement. The modified asphalt greatly improves the mix's flexibility resulting in a more crack-resistant pavement.



**Pavement Capital Program** – For some roads, preservation treatments may not be appropriate, and resurfacing or full-depth reclamation may be necessary. These projects are included in the the pavement capital program.

- **Resurfacing** – pavement rehabilitation process of milling off the top layer of existing pavement to a specified depth (1-2") and replacing this layer with a new hot mix asphalt riding surface. In some cases, roads are simply overlaid.
- **Full-Depth Reclamation (FDR)** – FDR is a pavement rehabilitation process where the road base is reconstructed by pulverizing the existing asphalt pavement and the gravel base materials mixing them with a stabilizing agent designed to strengthen the base. FDR uses in-place materials in a true recycling process that provides long term improvement for severely distressed roads, thus extending surface life after surfacing.

## 2023 Pavement Preservation

The FFY 2023 Pavement Preservation program will include approximately 115 miles of PPEST, chip seal, and crack seal. These charts provide an inventory of pavement preservation projects anticipated to be completed during FFY 2023 construction season:

### FFY 2023 - Rubberized Asphalt Chip Seal

Municipality	Road Name	Road Limits	Miles
Charlestown	Narragansett Tr	Botka Woods Dr. to Pole #8	0.5
Charlestown, Richmond	Richmond Town House Rd and Carolina Back Rd	Rt. 138 to Old Shannock Rd	9.7
Richmond	Church St	Westerly Town Line to New Kings Factory Rd	4.8
Richmond	Church St	New Kings Factory Rd to Switch Rd	0.6
South Kingstown	Post Rd	US-1 to Old Post Rd/Main St/South Rd	1.0
Total			16.5

### FFY 2023 - Thin Overlay (PPEST)

Municipality	Road Name	Road Limits	Miles
Cranston	Bald Hill Rd & New London Ave Mainline	Warwick town line to Rt 37	13.0
Cranston	Bald Hill Rd & New London Ave Ramps	Warwick town line to Rt 37	3.5
Hopkinton	Nooseneck Hill Rd and Main St	I-95 South On-Ramp to Lawton Foster Rd South	4.1
Hopkinton	Nooseneck Hill Rd and Main St (RI 3) - Section 2	Pequot Lane to High Street	1.5
Lincoln	Breakneck Hill Rd	RI 246/Old Louisquisset Pike to Great Rd.	2.3
Pawtucket	Pawtucket/Central Falls Commuter Rail Station	Overflow Parking	n/a
Richmond	Kingstown Rd	Richmond Elementary School to Riverhead Building Supply	3.7
Scituate	Plainfield Pike	Scituate Reservoir Causeway	1.1
Warwick	Post Road Extension	RT 113/Main Ave to Post Rd Roundabout	6.0
Total			35.1

### FFY 2023 - Crack Seal

Municipality	Road Name	Road Limits	Miles
Burrillville	RI-98 & RI-98/107	RI-107E to RI-96	0.3
Burrillville	RI-100	Griffin Street to RI-107	0.3
Burrillville	RI-100	RI-107 to High Street (Pascoag Center)	0.1
Burrillville	RI-100	East Wallum Lake Road (Past Zambarano) to Massachusetts S/L	0.5
Burrillville	RI-102	Old Route 102 to Inman Road	5.4
Burrillville	RI-107	Union Street Bridge to RI-98	0.8
Burrillville, North Smithfield	RI-102	Inman Road to Main Street	0.8
Cumberland	RI-114/RI-123	Broad Street to High Street	0.1
Cumberland	RI-114	Blackstone Street to Pole 125	1.2
Cumberland	RI-114	RI-120 to RI-121	1.7
Cumberland	RI-120	RI-122 to RI-114	2.6
Cumberland	RI-120	RI-114 to Massachusetts S/L	1.7
Cumberland	RI-122	I-295 to Beamis Avenue	1.4
Cumberland	RI-122	Beamis Avenue to Homestead Avenue	1.8
Cumberland	Albion Road	Lincoln T/L to RI-122	0.7
Cumberland	High Street	Abbott Street to RI-123	0.8
Cumberland	Little Pond Country Road	Scott Road to Pole 77	0.6
Cumberland	Little Pond Country Road	Pole 77 to RI-120	0.6
Cumberland	Manville Hill Road	Pole 11 to RI-122	0.6
Cumberland	Marshall Avenue	Meadowcrest Drive to RI-114	0.4
East Providence	US-44	Six Corners except John Street	0.5
East Providence	RI-114/US-1A	US-44 to RI-114A (Pleasant Street)	0.9
East Providence	RI-114/US-1A	RI-152 to Newport Avenue	0.6
Glocester	US-44/102	RI-102N to RI102S	0.6
Glocester	US-44	RI-102S to Glocester Maintenance Facility	1.9
Glocester	Sawmill Road	Snake Hill Road to US-44	1.2
Glocester	Snake Hill Road	Anan Wade Road to RI-102	1.8
Glocester, Scituate	Sawmill Road	Elmdale Road to Snake Hill Road	1.5
Glocester, Smithfield	West Greenville Road	Snake Hill Road to US-44	1.1
Lincoln	RI-116	East of Whitetopping to Pole 57S	1.0
Lincoln	RI-116	Pole 57S to East of Maintenance Facility	0.9
Lincoln	RI-123/RI-126	RI-126 (Smithfield Avenue) to RI-126 (River Road)	0.2

Continued on Next Page

### FFY 2023 - Crack Seal (Continued)

Municipality	Road Name	Road Limits	Miles
Lincoln	RI-126	Sayles Hill Road to Railroad Street	0.9
Lincoln	Albion Road	Main Street to Cumberland T/L	0.2
Lincoln	Old Louisquisset Pike	Jenkes Hill Road to RI-116	2.3
Lincoln, Smithfield	RI-116	RI-7 to RI-123	2.4
North Providence	RI-15	US-44 to Ivan Street	2.2
North Providence	RI-15	Ivan Street to Pawtucket C/L	1.8
North Providence	US-44E	End US-44W to Woonasquatucket Avenue	0.9
North Providence	US-44W	Smith Street to Putnam Pike	2.8
North Providence	Smithfield Road	Gentian Avenue to High Service Avenue	0.7
North Providence	Smithfield Road	High Service Avenue to RI-15	0.3
North Providence, Providence	US-44	Woonasquatucket Avenue to Academy Avenue	0.2
North Smithfield	RI-146A	RI-146 to Park Avenue	0.8
North Smithfield	RI-146A	School Street to Pole 551-32	0.3
North Smithfield	RI-146A	RI-102/RI-146A to RI-5	1.3
North Smithfield	North Smithfield Industrial Hwy	RI-5 to Pound Hill Road	0.3
North Smithfield	Steel Street	North Smithfield Industrial Highway to end	0.2
North Smithfield, Smithfield	Providence Pike	RI-7 to RI-5/104	1.1
North Smithfield, Woonsocket	RI-126	Railroad Street to Bertenshaw Road	0.2
Pawtucket	US-1A	East Providence C/L to Federal Street	1.0
Pawtucket	RI-15	George Bennett Industrial Highway to US-1A	0.5
Providence	US-1	RI-12 (Park Avenue) to I-95	0.8
Providence	US-1A	Public Street to Eddy Street	0.4
Providence	US-44	Academy Avenue to I-95	1.6
Providence	US-44	I-95 to Canal Street	0.3
Smithfield	US-44	West Greenville Road to East of Concord Street	1.8
Smithfield	US-44	Through I-295 Interchange	0.5
Smithfield	RI-104	I-295 to RI-116	0.8
Woonsocket	RI-114	Bound Road to RI-126	2.1
Woonsocket	RI-126	RI-122 (Hamlet Avenue) to Social Street	0.5
Total			63.8

At the time of advertisement, the quantities for the Crack Seal Program are estimates based on existing condition. It is not unusual for the condition of the roadway to deteriorate further before repair activities commence. Therefore, the project carries additional roadway lane mile to ensure that all quantities will be exhausted at substantial completion. In any given year, if roadways exceed available project quantity, the remaining roads will be shifted and prioritized to be completed in the next construction season.

## 2023 Pavement Preservation

Some roadways originally slated for FFY 2022 crack seal were moved to the FFY 2023 construction season. The following Tier 1 and Tier 2 roadways were given priority when crack sealing resumed in spring 2023 and are now completed.

### Crack Seal - FFY 2022 Work Completed in FFY 2023

Municipality	Road Name	Road Limits	Miles
<b>Tier 1 Roads</b>			
Charlestown	Old Post Road	US-1 at West End to Ninigret Park Entrance	0.4
Charlestown	Carolina Back Road	Rt 2/South County Trail to Rt 91/Alton Road	2.2
Charlestown	Narragansett Trail	Kings Factory Road to End	0.5
Charlestown/Westerly	Post Road	Mile Marker 3.0, Westerly to Tamanaco Drive, Charlestown	6.6
Exeter	Ten Rod Road	Forest Hills Road to Sunderland Road	2.6
Exeter	Mill Pond Road	Railroad Avenue to Yawgoo Valley Road	0.9
Exeter	Dorset Mill Road	Mill Pond Road to Cul-De-Sac at End	0.1
Exeter	Austin Farm Road	I-95 to Black Plain Road	0.3
Hopkinton	Spring Street	Nooseneck Hill Road to Soap House Lane (South)	0.2
Hopkinton	Spring Street	Wincheck Pond Road (South) to Camp Yawgoog Road	0.1
Hopkinton	Alton Bradford Road	Collins Road to Ashaway Road/Rt. 216	2.3
Hopkinton	High Street	Rt. 3/Nooseneck Hill Road to Laurel Avenue	0.2
Hopkinton	Gray Lane	Wellstown Road to 200 Yd From End at I-95	0.4
Hopkinton	Laurel Street	High Street/Rt. 216 to Palmer Street	0.2
Hopkinton	Nooseneck Hill Road/Main S	Lawton Foster Road South to Mechanic Street	3.6
Hopkinton/Richmond	Switch Road & Mechanic St	Old Switch Road South to Old Switch Road North	1.2
Hopkinton/Richmond	Bridge Street	Rt. 3/Nooseneck Hill Road to Square	0.2
Jamestown	Conanicus Avenue	East Shore Road to High Street Walcott Avenue	1.2
Jamestown	Hamilton Avenue	Walcott Avenue to Southwest Avenue	0.7
Jamestown	Southwest Avenue	Hamilton Avenue to Narragansett Avenue	0.6
Jamestown	Narragansett Avenue	Grinnell Street to Conanicus Avenue	0.2
Little Compton	Sackonnet Point Road	West Main Road to End	1.5
Little Compton	Pottersville Rd & Mullen Hil	Long Hwy to Mass State Line	1.6
Little Compton	Main Street	Colebrook Road/ Stone Church Road to Mass State Line	0.3
Middletown	East Main Road	Wyatt Road to Bailey Brook Bridge	0.8
Middletown	West Main Road	Coddington Hwy to John Kesson Lane	2.2
Narragansett	Beach St	Sprague Bridge to Ocean Rd	1.2
Narragansett	Ocean Road & Old Point Jud	Rt 108 to End	0.8
Narragansett	Great Island Rd & Gallilee Co	Loop In Gallilee	0.5
Narragansett	Kingstown Road	Rt. 108 Rotary to Narragansett Avenue	1.0
Narragansett	Narragansett Avenue	Kingstown Road to Beach Street	0.3
North Kingstown	Railroad Avenue	Exeter Road to Mill Pond Road	1.1
North Kingstown	West Main Street	US-1/Tower Hill Road to Roosevelt Avenue/Park Entrance	0.1
North Kingstown	Boston Neck Road	Brown Street/Phillips Street to Beach Street	0.3
North Kingstown	Boston Neck Road	Rt. 138 Westbound Ramp to Ferry Road	1.4
North Kingstown	Post Road	Richard Smith Dr. to Chadsey Road	2.1
North Kingstown	Devil's Foot Road	Sachem Road to School Street	0.5
Portsmouth	West Main Road	Locust Avenue to Lane Split South Of Rt. 24 Nb On-Ramp (North Of	1.7
Portsmouth	Boyds Lane	Rt. 138/East Main Road to Park Avenue	0.4
Portsmouth	Park Avenue	Norsemen Dr to Boyds Lane	0.2
Portsmouth	Turnpike Avenue	Rt. 138/East Main Road to Rt. 114/West Main Road	1.0
Portsmouth	Schoolhouse Lane	Middle Road to Rt. 138/East Main Road	0.4
Portsmouth	Chase Lane	Park Avenue to Boyd Lane	0.4

Continued on Next Page

**Crack Seal - FFY 2022 Work Completed in FFY 2023 - continued**

Municipality	Road Name	Road Limits	Miles
<b>Tier 1 Roads - continued</b>			
Richmond	Church Street	Westerly Town Line to Switch Road	1.5
Richmond	Switch Road	Rt 91/Alton Road to Woodville Road	1.6
Richmond/S. Kingstown	Old Esquapaug Road (E-W Rd)	RI 138 to Glen Rock Road	0.1
S. Kingstown	Main Street/Post Road	RI 108 to US 1	2.0
S. Kingstown	Post Road	US-1 to Old Post Road	0.7
S. Kingstown	Old Post Road	Post Road to Main Street	0.4
S. Kingstown	Post Road & Main Street	Old Post Road to High Street	0.1
S. Kingstown	Main Street	High Street to Rt. 108/Kingstown Road	0.1
S. Kingstown	Kingstown Road	Narragansett Town Line to North Road	1.4
S. Kingstown	Kingstown Road	Kersey Road to North Road (Through Peacedale)	0.4
S. Kingstown	Kingstown Road	Dam Street to Rt 138/Mooresfield Road	1.9
S. Kingstown	Ministerial Road	US-1 to Tuckertown Road	2.2
Tiverton	Main Road	Highland Road to Highland Road	1.5
Tiverton	Main Road	East Road to Anthony Way	1.7
Tiverton	Nannaquacket Road	Main Road/Rt. 77 to Main Road/Rt. 77	1.7
Tiverton	East Road	Rt 77/Main Road to Stone Church Road	1.6
Tiverton	Stone Church Road	East Road to Sylvia Road	0.5
Tiverton	Riverside Dr	Rt 77/Main Road to Sakonnet River Bridge	0.4
Tiverton	Canning Blvd	Stafford Road Roundabout to Mass State Line	0.2
Tiverton	Fish Road	Beth Road to Mass State Line	1.2
Tiverton	Main Road	Mass State Line to John Street.	2.3
<b>Tier 2 Roads</b>			
East Greenwich, North Kings	Rt. 403 (mainline only)	Rt. 4 to Commerce Park Rd	4.0
Newport	Admiral Kalbfus Rd	Malbone St to West Main Rd/Broadway	0.6
Newport	Glady's Carr Bolhouse Rd	Washington St. to Causeway/Goat Island Bridge	0.1
Westerly	Dunn's Corner Rd	Rt 1/Post Rd to Westerly Bradford Rd	2.1
<b>Total</b>			<b>74.7</b>

The following Tier 2 roadways will be given priority when crack sealing resumed in FFY 2024.

**Crack Seal - FFY 2022 Work to be Completed in FFY 2024**

Municipality	Road Name	Road Limits	Miles
<b>Tier 2 Roads</b>			
Barrington	Sowams Rd	New Meadow Rd to Francis St	0.4
Bristol, Warren	Hope St/Main St	Elmwood Dr, Bristol to Beach St. Warren	0.7
Newport	Adm. Kalbfus Rd	Newport Rotary to 3rd St	0.1
Newport	Memorial Blvd & America's	Spring St. to Bridge St.	0.7
Newport	Farewell St	Van Zandt St to Poplar St	0.4
Newport	America's Cup Ave	Farewell St. to Glady's Carr Bolhouse Rd.	0.2
Newport	Memorial Blvd	Thomas St to Middletown Town Line	1.4
Warren	Main St	Beach St. to Hope St.	0.7
Warren	Main St	Hope St to Water St	1.7
Warren	Market St	Kickemuit Ave to Mass State Line	1.6
Warren	Child St	Mass State Line to Metacom Ave/Rt. 136	1.3
Warren	Child St	Metacom Ave to Rt. 114/Main St	0.7
Westerly	Potter Hill Rd	Rt 3/Ashaway Rd to Canal St/Boombridge Rd	1.9
Westerly	High St	Railroad Ave to Grove Ave	0.1
Westerly	Post Rd	Robin Hollow Rd to Woody Hill Rd	0.0
Westerly	Westerly Bradford Rd	Larry Hirsch Ln to Tower St	0.8
Westerly	Watch Hill Rd	East Ave to Ninigret Ave	2.9
Westerly	Main St/Beach St	Union St to Clark St	0.8
Westerly	Tower St.	Oak St to Granite St/Rt. 1	0.8
Westerly	Post Rd	Rt. 78 to Bellaire St	0.3
Westerly	Post Rd	Bellaire St to Langworthy Rd/Dunns Corner Rd	1.8
Westerly	Shore Rd	Watch Hill Rd to Post Rd/Rt. 1	5.1
Westerly	North Main St	Rt. 91/Bradford Rd to End @ Amtrak	0.2
<b>Total</b>			<b>24.6</b>

## Safety

RIDOT continues to track an increased amount of roadway fatalities. As a result, the focus remains to increase community outreach via social media, educational programs, and law enforcement efforts to support RIDOT's goal to ZERO FATALITIES. This quarter the Department reviewed proposed legislative initiatives that focus on increasing safety. RIDOT consistently supports matters that are proven deterrents to dangerous driving behavior to include impaired driving, speed, and distracted driving.

It is not always easy staying positive about safety as we track increased fatalities. But we are motivated to increase outreach efforts, create new partnerships, and look for innovative and evidence-based strategies to save lives and decrease serious injuries. We remain inspired by our goal to ZERO FATALITIES and will continue to work hard to support that goal.

The highway safety unit began developing its annual grant application to NHTSA. Through NHTSA's Final Rule, RIDOT is mandated to create and increase public participation engagement. Community meetings were facilitated in Woonsocket and Warwick, and one with an active youth group partner, Young Voices, which shared community expertise and knowledge. RIDOT was there to listen, then address valid safety concerns to strengthen our influence and ability to reach ZERO FATALITIES goal. The highway safety unit also began developing its Triennial Grant Application. The Triennial plan is due in July, and the Department is on track to meet that deadline to create a 3 year plan based on community needs, community data and capacity.

During this quarter, RIDOT also hosted an annual Highway Safety Champion awards ceremony which has been on hold since before the pandemic. Many law enforcement officers and community advocates were shown sincere appreciation for their efforts to keep their neighbors, communities, and families safe.

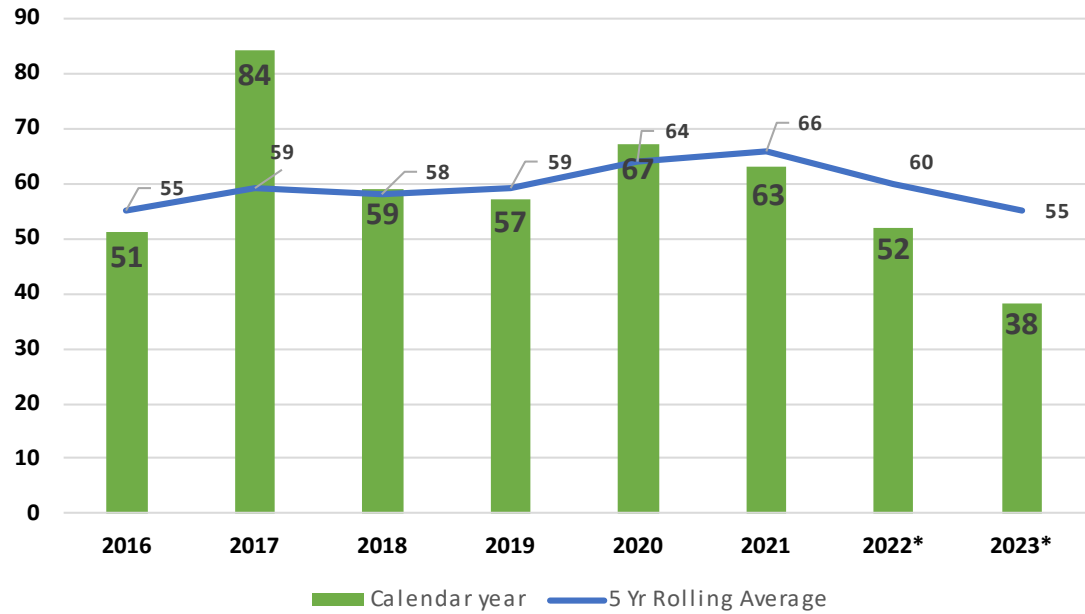
RI's Injury Prevention Group through Lifespan hosted a media event noting their joint partnership with RIDOT. They shared traffic safety challenges through their emergency medical perspective which is often forgotten. With assistance of NHTSA funding, they created doctor driven radio spots with traffic safety messages that amplify our ZERO FATALITIES goal.

**FARS FATALITIES BY PERSON TYPE 2015-2023**

PERSON TYPE	2015	2016	2017	2018	2019	2020	2021	2022* (prelim.)	2023* (prelim.)
Motor Vehicle Occupants	28	31	50	30	36	35	41	34	24
Motorcyclists	9	4	11	18	13	13	13	11	10
Pedestrians	8	14	21	7	8	17	7	7	4
Bicyclists	0	2	2	1	0	2	2	0	0
ATV	0	0	0	2	0	0	0	0	0
Person on Personal Conveyance	0	0	0	1	0	0	0	0	0
Unknown Person Type	0	0	0	0	0	0	0	0	0
<b>TOTAL</b>	<b>45</b>	<b>51</b>	<b>84</b>	<b>59</b>	<b>57</b>	<b>67</b>	<b>63</b>	<b>52</b>	<b>38</b>

Note: Per Federal Rule, fatality data remains in "preliminary" status for 12 months following the close of calendar year.

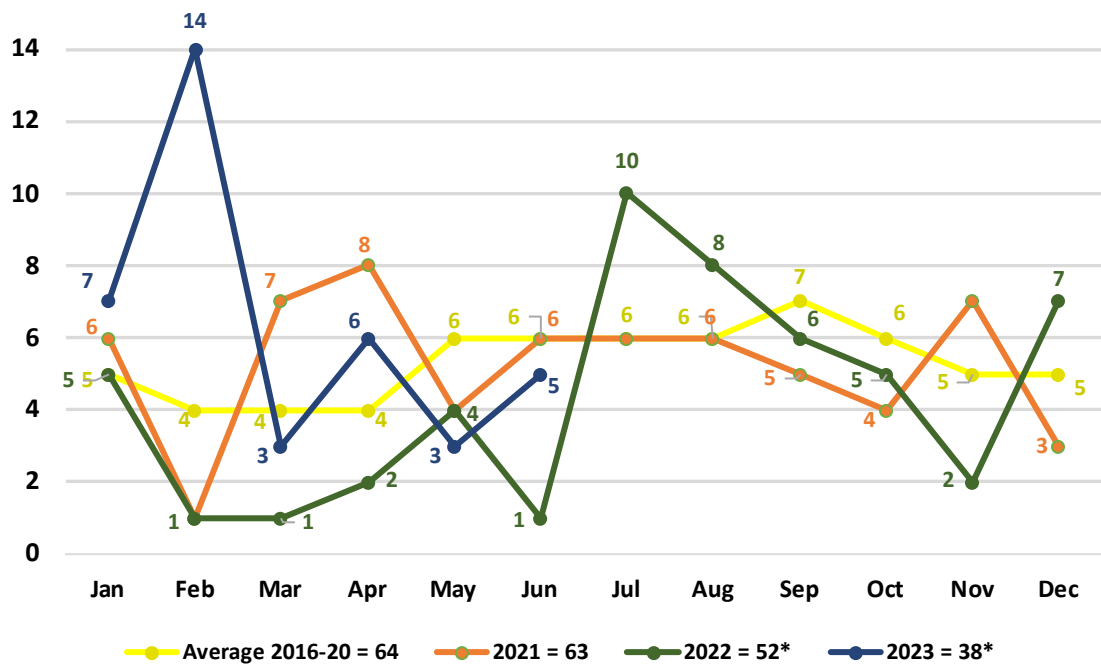
## Traffic Fatalities by Year



\*Per federal rule, fatality data remains in preliminary status for 12 months following the close of calendar year.



## Traffic Fatalities by Month



\*Per federal rule, fatality data remains in preliminary status for 12 months following the close of calendar year.

## Maintenance and Operations



The RIDOT Maintenance Division district facilities and specialized crews were busy this quarter performing maintenance activities along Rhode Island roadways. During the third quarter, RIDOT swept 2,169 curb miles of roadway, mowed 1,954 miles of grass (mower passes), cleaned 3,071 and repaired 120 drainage structures, installed 1,531 signs (both replacements and new), performed 4,458 hours of large debris and litter pickup and 261 hours of graffiti cleanup, completed 509 traffic signal maintenance work orders, 64 highway lighting maintenance work orders, and 26 tree maintenance work orders. The RIDOT Maintenance Division continues to use the services of the automated pothole patching truck vendor.

Additionally during the third quarter, the RIDOT Maintenance Division issued 54 Physical Alteration Permits (PAPs) for residential and commercial construction impacting the State Highway Right-of-Way (ROW) and issued 211 utility permits for utility construction impacting the State Highway ROW.

The RIDOT Maintenance Division prioritized the fleet procurement with the remaining State FY2023 fleet budget and started preparing for the State FY2024 fleet budget. RIDOT received 4 highway tractors, 2 sign trucks, and 1 material screener this quarter. Production continued for 12 one-ton dump trucks, 14 plow trucks, 1 road tractor, 6 roadway sweepers, 2 ten-wheel tractor trucks and 8 truck mounted attenuators (TMAs). All are expected over the next year. The bid for 14 zero turn mowers was awarded. RIDOT received bids for 1 wheeled excavator, 8 two-ton hotboxes, and bid out for 9 landscape trailers. The RIDOT Maintenance Division is also experiencing production delays due to supply chain challenges that are happening nationwide. Specifications for other equipment in the pipeline are being put together and finalized for bid, including additional plow trucks, pickup trucks, highway tractors, loaders, a forklift, crane, and roadside spray truck. The RIDOT Maintenance Division is also pursuing additional equipment to assist with litter cleanup including litter rakes and turf sweepers. Recently, additional alternate stormwater funding was identified, and RIDOT is procuring for 2 additional ten-wheel tractor trucks, 9 stetcos (catch basin cleaning trucks), and 8 additional roadway sweepers.

For facility improvement projects, construction for the Middletown Maintenance Facility improvements (demolish back storage buildings, build new back storage building, improvements to main front building, etc.) is nearing completion. Additional maintenance facility improvement projects (general small-scale improvements, Maintenance Division Warwick Headquarters exterior building improvements, RT 6/I-295 stockpile lot improvements, facility heating system upgrades) are being prioritized and scoped with the upcoming fiscal year budgets. RIDOT has also initiated a statewide assessment of its facilities to develop a more in-depth, long-term capital facilities rehabilitation and/or replacement plan.

The Transit Operations Program includes projects and activities to support and maintain MBTA commuter rail service, Amtrak intercity rail service, seasonal ferry services, and other transit initiatives.

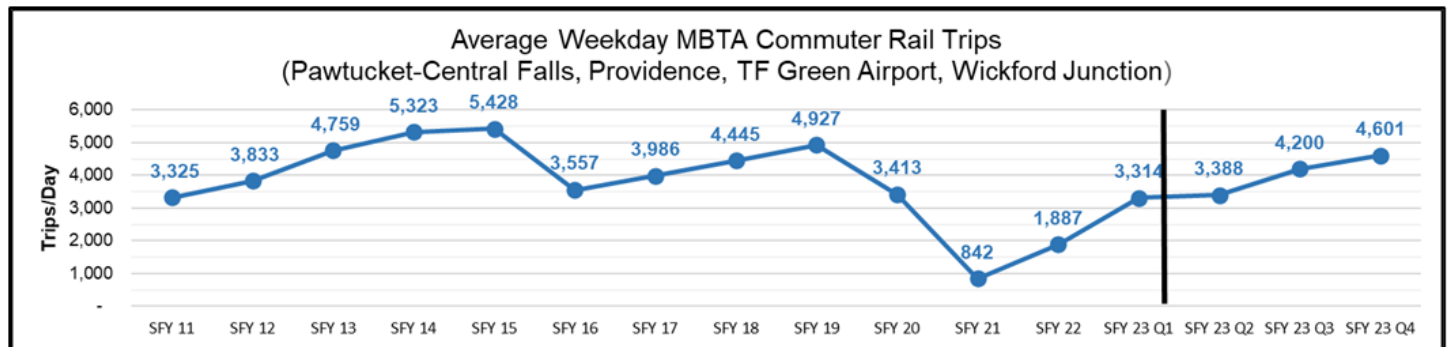
The Providence-Newport Ferry began its eighth season of service this quarter on June 23rd. Parking is freely accessible in Providence, and riders can also access the ferry via free RIPTA shuttle service between Providence Station and the Ferry landing site at 25 Portugal Parkway.



The Pawtucket-Central Falls Transit Center completed its second quarter of operations, with daily estimated ridership counts increasing 18% over last quarter. Ridership at all four commuter rail stations in the state showed a 10% increase in average weekday trips this quarter.

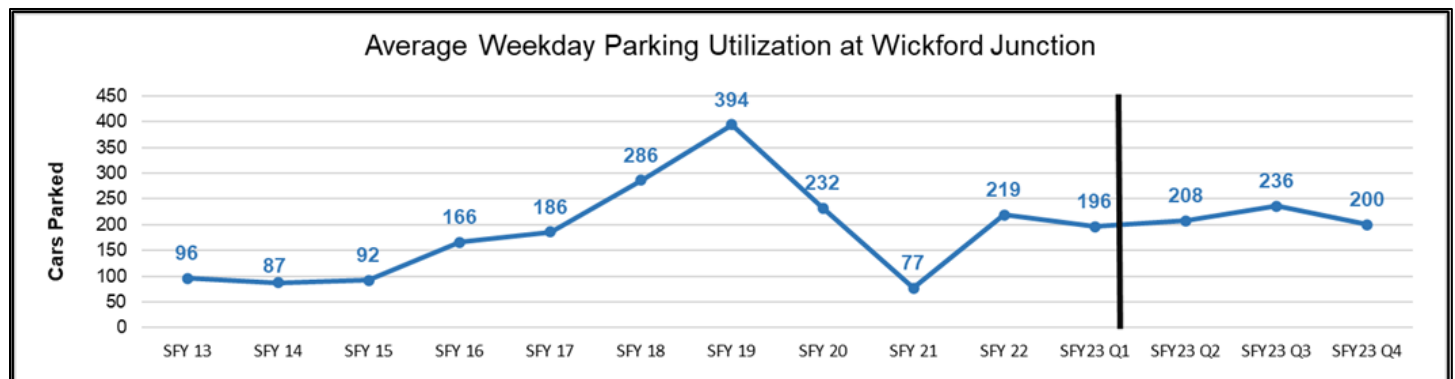
The chart below incorporate the preliminary counts for Pawtucket-Central Falls commuter rail ridership based on June 2023 data.

## Commuter Rail Ridership



Definition: Quarterly weekday ridership counts and estimates of MBTA trips at the Providence, T.F. Green Airport, and Wickford Junction commuter rail stations (counts include both boardings and alightings)

## Parking Garage Utilization



Definition: Average daily (weekday only) counts of the number of cars parked at the Wickford Junction garage

Ridership and Garage Utilization Data Sources: MBTA Blue Book, MBTA operator estimates, RIDOT quarterly counts, RIDOT partial counts, observations (SFY20 Q4) and Wickford Junction operator transactions. SFY23 Q3 commuter rail ridership value includes a pro-rated estimate for Pawtucket-Central Falls

## Stormwater/Natural Resources



**Background:** In 2011, the US Environmental Protection Agency (EPA) audited RIDOT for compliance with stormwater pollution controls under the Clean Water Act. In 2020, The Natural Resources Unit and Landscape Unit joined the Office of Stormwater Management and was renamed the Environmental Division which is under the direction of the Stormwater Administrator. The Natural Resources Unit (NRU) services project management by advising and reviewing, environmental policy, permitting and design documents.

**Update:** During the third quarter of FFY 2023, the Environmental Division continued its efforts to comply with the EPA Consent Decree, assist in the environmental permitting and compliance on all RIDOT projects, and to meet all Municipal Separate Storm Sewer System (MS4) obligations. Throughout the quarter, the division completed numerous project design reviews, feedback for grants, continued its work on the development of a permit tracking program and database, responded to drainage and erosion issues, reviewed state land sale proposals and physical alteration permits, and construction/final inspections.

### Q3 Highlights:

<p><b>Reviewed:</b></p> <ul style="list-style-type: none"> <li>• 2 Army Corps Permit Submissions</li> <li>• 8 RIDEM Permit Submissions</li> <li>• 1 CRMC Permits Submissions</li> <li>• 4 CEs</li> <li>• 1 Endangered Species Evaluations</li> <li>• 2 CLUES</li> <li>• 8 Stormwater Pollution Prevention Plans</li> <li>• 25 Projects (PS&amp;E, 90%, etc.)</li> <li>• 1 PAP for landscape, 22 PAPs for Stormwater</li> </ul> <p><b>Inspections/Audits:</b></p> <ul style="list-style-type: none"> <li>• 17 Final Inspections</li> <li>• 6 Winter Stabilization Audits</li> <li>• 224 SWPPP inspections received and documented</li> <li>• 1 Compliance Inspection</li> <li>• 4 Final Landscape Inspections (FAF-7)</li> <li>• 21 CCTV Inspections</li> <li>• 175 STU Inspections</li> </ul>	<p><b>Projects:</b></p> <ul style="list-style-type: none"> <li>• Finalized Scarborough Beach field work</li> <li>• Continued work on Greenwich Bay Upland STUs</li> <li>• Started Stormwater Ponds Retrofit project</li> <li>• Working with Planning unit on a PROTECT Grant</li> <li>• 80% complete IDDE &amp; CCTV investigation project along I-95 near Thurbers Avenue in Providence</li> <li>• USFWS/RIDEM Coordination for Northern Long Eared Bat</li> <li>• Created new workflow for VUEWorks Asset Management System Drainage Condition inspections to verify environmental concern</li> <li>• Continued to serve as a reviewer on the New England Transportation Consortium “Seed Production for NE Roadsides” project</li> <li>• Prepared RFQ for Monarch Candidate Conservation Agreement MPA</li> </ul>
---	--

# Projects

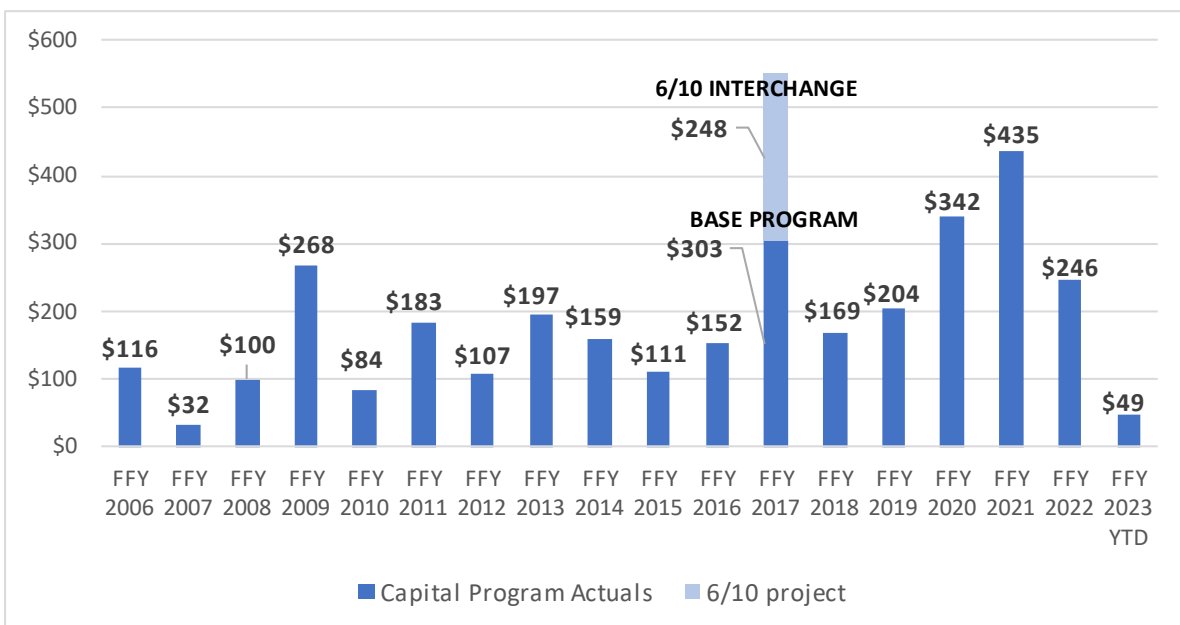
## Project Performance

RIDOT is currently tracking 44 capital projects in active construction as of the end of the third quarter of FFY 2023. Projects progress through RIDOT's project delivery process as follows: first, the project is included in the capital plan; then it goes through a design phase, followed by an advertisement for construction; construction and substantial completion. The On-Time On-Budget chart below has been modified to reflect more comprehensive representation of the construction program based on all projects advertised within a particular Federal Fiscal year. All projects advertised in FFY17 – FFY22 have been issued NTP (Notice to Proceed).

### On-Time and On-Budget Project Performance by Class

	On Budget % (by Value)	On Time % (by Value)	Total Construction Value of all projects	On Budget % (by Projects)	On Time % (by Projects)	Total # of Projects	# of Projects in Active Construction
FFY17	83%	90%	\$ 549.8	88%	92%	48	1
FFY18	62%	91%	\$ 230.5	87%	98%	54	0
FFY19	81%	94%	\$ 226.4	87%	97%	39	2
FFY20	98%	96%	\$ 352.1	90%	95%	21	3
FFY21	99%	98%	\$ 437.0	96%	92%	24	9
FFY22	90%	91%	\$ 249.3	90%	93%	29	19
FFY23	100%	100%	\$ 48.4	100%	100%	20	10
<b>TOTALS</b>			<b>\$ 2,093.6</b>			<b>235</b>	<b>44</b>

### Capital Program Construction



# FFY 2022 Capital Program

PTS ID	Project	Actual/Projected Advertised Date	Engineer's Estimate at Bid Opening (in millions)	Low Bid (in millions)	Value Change (in millions)
0016U	Bridge Group 42A	Oct-21	\$ 3.92	\$ 2.94	\$ 0.98
2604R	Rt 146 Guide Signs C-2 (Re-advertised)	Oct-21	\$ 4.12	\$ 5.88	\$ (1.76)
2603T	HSIP - Intersection & Crosswalks Central-South - 2022	Nov-21	\$ 3.04	\$ 2.78	\$ 0.26
0082N	East Shore Expwy & Wampanoag Tr	Nov-21	\$ 10.80	\$ 7.98	\$ 2.82
0082U	Rt 138A - Aquidneck Ave (E Main Rd - Green End Ave)	Dec-21	\$ 5.53	\$ 4.98	\$ 0.55
0188A	Barrington & Warren Bike Path Bridges (DB)	Dec-21	\$ 11.13	\$ 17.99	\$ (6.86)
2603U	HSIP - Intersection & Crosswalk Improvements East Bay - 2021	Jan-22	\$ 2.36	\$ 2.40	\$ (0.04)
0074Q	Airport Connector & Rt 1/1A Post Rd.	Feb-22	\$ 9.90	\$ 8.37	\$ 1.53
0031Z	Bridge Group 13B - Rt 146 C-2	Feb-22	\$ 4.38	\$ 3.19	\$ 1.20
2604N	HSIP - High Risk Rural Roads - 2022	Feb-22	\$ 2.31	\$ 1.98	\$ 0.33
2605C	2022 Crack Sealing C-1	Feb-22	\$ 1.37	\$ 1.30	\$ 0.07
2605A	2022 Paver Placed Elastomeric Surface Treatment C-1	Feb-22	\$ 2.16	\$ 2.04	\$ 0.12
2605B	2022 Rubberized Asphalt Chip Seal C-1	Feb-22	\$ 1.44	\$ 1.50	\$ (0.06)
9009B	Pawtucket/Central Falls Transit Center Parking Lot	Mar-22	\$ 3.24	\$ 2.88	\$ 0.37
9005V	Providence Station Improvements SOGR	Mar-22	\$ 20.70	\$ 20.70	\$ -
0016R	Bridge Group 39 - Rt 146	Mar-22	\$ 27.42	\$ 26.56	\$ 0.86
2605V	Statewide Resurfacing	Apr-22	\$ 2.52	\$ 2.45	\$ 0.07
0016Q	Bridge Group 37 - I-295 Mendon	May-22	\$ 12.53	\$ 11.55	\$ 0.98
2605U	US-6, RI-94, Reynolds Rd, & East Rd	May-22	\$ 10.51	\$ 11.27	\$ (0.76)
0082S	Boston Neck Rd & South County Tr	May-22	\$ 18.80	\$ 19.47	\$ (0.67)
0131P	Salt Storage Facility - Newport	Jun-22	\$ 2.84	\$ 3.12	\$ (0.29)
2605G	Interstate Resurfacing (I-95 and I-295)	Jun-22	\$ 28.74	\$ 29.35	\$ (0.61)
2603R	Davisville RR Bridge #369	Jun-22	\$ 6.23	\$ 6.42	\$ 0.19
2604P	HSIP - Intersection & Crosswalks East-South - 2022	Jul-22	\$ 1.83	\$ 1.47	\$ 0.35
2603G	Bridge Group 33A - I-295 Providence St.	Jul-22	\$ 9.49	\$ 10.73	\$ (1.23)
0013T	Bridge Group 14 - Rt 99	Aug-22	\$ 26.73	\$ 15.78	\$ 10.95
2606B	Bridge Group 45B_H - Kings Factory (Re-Advertised)	Aug-22	\$ 4.82	\$ 4.18	\$ 0.64
2605X	Statewide Congested Corridor Upgrades	Sep-22	\$ 3.20	\$ 1.77	\$ 1.43
2604S	I-95 (SR) (Connecticut S/L to RI-138)	Sep-22	\$ 15.07	\$ 14.57	\$ 0.50
<b>TOTAL</b>			<b>\$ 257.13</b>	<b>\$ 245.59</b>	<b>\$ 11.92</b>

## FFY 2023 Capital Program

PTS ID	Project	Actual/Projected Advertised Date	Engineer's Estimate at Bid Opening (in millions)	Low Bid (in millions)	Value Change (in millions)
2606A	Statewide Systemic Safety Improvements	Oct-22	\$ 5.22	\$ 4.78	\$ 0.45
2606R	HSIP - Intersection & Crosswalks North-Central – 2022 (Re-advertised)	Oct-22	\$ 4.42	\$ 3.50	\$ 0.93
2605W	Pawtucket Bridge Lighting and Bridge Strike Detection Systems	Oct-22	\$ 2.87	\$ 3.16	\$ (0.29)
0102R	Rt 138 & Rt 112 Roundabout	Nov-22	\$ 4.01	\$ 3.57	\$ 0.44
1500B	Bridge Preservation Program 2022 C-1	Dec-22	\$ 5.80	\$ 4.66	\$ 1.14
2601R	Bridge Group 17B - BUR	Feb-23	\$ 9.70	\$ 12.44	\$ (2.74)
2606N	2023 Paver Placed Elastomeric Surface Treatment C-1	Feb-23	\$ 6.24	\$ 6.69	\$ (0.45)
2606Q	2023 Crack Sealing C-1	Mar-23	\$ 1.60	\$ 1.47	\$ 0.12
2606P	2023 Rubberized Asphalt Chip Seal C-1	Mar-23	\$ 1.31	\$ 1.25	\$ 0.06
2606L	Airport Connector Landscaping	Mar-23	\$ 5.96	\$ 7.00	\$ (1.03)
2606U	Pavement Improvements - Mendon Rd	May-23			\$ -
2605F	Bridge Group 13E - West River	Jun-23			\$ -
2605P	Pavement Improvements - CHA, WES	Jun-23			\$ -
2605Q	Pavement Improvements - CUM	Jun-23			\$ -
2605Y	HSIP - Intersection & Crosswalk - 2023	Jun-23			\$ -
0016H	Corridor - Tower Hill Rd	Aug-23			\$ -
2605R	Pavement Improvements - BAR, EPR, WRN	Aug-23			\$ -
2605N	Pavement Improvements - Putnam Pike & Reservoir Rd	Aug-23			\$ -
2604X	Pavement Improvements - WAR C-1	Sep-23			\$ -
0026Q	Washington Secondary Bike Path Resurfacing	Sep-23			\$ -
<b>TOTAL</b>			<b>\$ 47.13</b>	<b>\$ 48.52</b>	<b>\$ (1.39)</b>

## FFY 2021, 2022, and 2023 Non-Capital Projects (Immediate Action)

PTS ID	Project	Actual/Projected Advertised Date	Engineer's Estimate at Bid Opening (in millions)	Low Bid (in millions)	Value Change (in millions)
<b>FFY21</b>					
2603V	*Steel Repairs to Branch Avenue RR Bridge	Nov-20	\$ 0.50	\$ 0.18	\$ 0.32
0073R	Statewide Striping - North	Jan-21	\$ 2.62	\$ 2.80	\$ (0.18)
9008K	Statewide At-Grade Railroad Crossings	Jan-21	\$ 0.33	\$ 0.22	\$ 0.11
2603X	Statewide Striping - East Bay	Feb-21	\$ 2.27	\$ 2.27	\$ -
2604F	*Priority Steel Repairs to Bridge	Apr-21	\$ 0.20	\$ 0.23	\$ (0.03)
2604J	Girder Repairs to Louisquisset Pike Bridge	Apr-21	\$ 0.37	\$ 0.20	\$ 0.18
0197C	*Esmond Park 10-B Priority 1 Stormwater Treatment Units	Apr-21	\$ 0.13	\$ 0.92	\$ (0.80)
0197F	*Buckeye Brook Stormwater Improvements	May-21	\$ 0.90	\$ 0.60	\$ 0.30
<b>TOTAL</b>			<b>\$ 7.32</b>	<b>\$ 7.42</b>	<b>\$ (0.10)</b>
<b>FFY22</b>					
2604E	Silver Creek Bikepath Culvert	Oct-21	\$ 0.17	\$ 0.16	\$ 0.01
2605E	Emergency Repairs to Hillsgrove Bridges	Oct-21	\$ 3.04	\$ 3.04	\$ -
0119R	Statewide Tree Trimming 2022-2024	Jan-22	\$ 0.83	\$ 0.70	\$ 0.13
9003H	*RIDOT Materials Field Office Renovation	Jan-22	\$ 0.39	\$ 0.38	\$ 0.00
0116U	2022-2023 Statewide Pavement Striping – Central	Feb-22	\$ 3.16	\$ 3.29	\$ (0.13)
0116T	2022-2023 Statewide Pavement Striping – Limited Access	Feb-22	\$ 4.29	\$ 3.78	\$ 0.51
0116V	2022-2023 Statewide Pavement Striping – South	Mar-22	\$ 3.08	\$ 2.90	\$ 0.18
0197G	Warwick Ave. Swales Rehabilitation	Mar-22	\$ 0.44	\$ 0.36	\$ 0.08
2604Z	High Priority Repairs to Bridge Nos. 062401, 075401, 098601	Apr-22	\$ 0.43	\$ 0.35	\$ 0.08
2605H	Emergency Replacement of Fish Road Bridge 124201	Apr-22	\$ 0.73	\$ 0.93	\$ (0.20)
2604H	Providence Street (WW) Wall Repairs	Apr-22	\$ 0.58	\$ 0.40	\$ 0.18
2605J	Repairs to Centerville Rd Bridge	Apr-22	\$ 0.40	\$ 0.25	\$ 0.15
0146A	I-95 Pavement and Retaining Wall Restoration	Jun-22	\$ 7.99	\$ 7.56	\$ 0.43
0197M	Greenwich Bay Upland Stormwater Improvements C-1	Jun-22	\$ 1.48	\$ 1.60	\$ (0.11)
<b>TOTAL</b>			<b>\$ 27.00</b>	<b>\$ 25.69</b>	<b>\$ 1.31</b>
<b>FFY23</b>					
2606A	Statewide Systemic Safety Improvements	Oct-22	\$ 5.22	\$ 4.78	\$ 0.45
0197P	Drainage Ponds Rehabilitation - 2022	Oct-22	\$ 2.43	\$ 3.19	\$ (0.76)
2605T	2022 DMS Replacement Project	Oct-22	\$ 1.22	\$ 1.03	\$ 0.19
7006P	Statewide Impact Attenuator 2023-2025	Dec-22	\$ 2.16	\$ 2.22	\$ (0.06)
7006Q	Statewide Fence 2023 - 2025	Dec-22	\$ 1.05	\$ 1.23	\$ (0.18)
7006N	Statewide Guardrail 2023 - 2025	Dec-22	\$ 3.78	\$ 4.49	\$ (0.71)
2606C	Bridge Group 33B -- Pawtuxet Valley RR	Mar-23	\$ 1.52	\$ 1.19	\$ 0.33
2606T	2023-2024 Statewide Pavement Striping - East Bay	Mar-23	\$ 2.54	\$ 2.64	\$ (0.10)
<b>TOTAL</b>			<b>\$ 19.93</b>	<b>\$ 20.78</b>	<b>\$ (1.53)</b>

**NOTE:** These projects typically require immediate action to extend the useful life of a project until the full project is programmed in the 10-year plan and have been added to the Quarterly Report as the Department strives to ensure that all projects follow the same transparency in schedule and budget. Examples of projects will include the response to critical bridge findings, statewide striping needs and other maintenance actions etc.

**NOTE:** \*Paper Bid – projects that are not advertised through the automated procurement process.

## Construction Program Changes

### Construction Program Update:

#### Changes to FFY 2023:

**0080P – Pavement Improvements – Veterans Memorial Parkway** – project removed from the report and combined with project 2605R – Pavement Improvements – BAR, EPR, WRN.

#### Removed from FFY23:

**0013X - Bridge Group 18A – EGR, NKS** – project has been cancelled with concurrence with FHWA.

**NOTE:** Construction activities continue to be impacted by long-term COVID-19 remnants. The demand for construction materials and personnel has continued to intermittently delay many projects. While the department continues to work with contractors to mitigate delays, the effects of COVID-19 will potentially impact project schedule performance.

## Providence-Newport Ferry Service



In 2016, RIDOT launched the Providence – Newport Ferry Service. After several years of success, a stop at Bristol’s waterfront has been added. Rhode Islanders and visitors to Rhode Island have enjoyed 7 successful seasons of this service.

**Update:** On June 23rd, RIDOT launched its eighth season of Providence-Newport Ferry service in partnership with Seastreak. Service continues to operate between Providence, Bristol, and Newport, providing Rhode Islanders and Rhode Island tourists an alternative to the Newport traffic and a unique opportunity to experience Narragansett Bay.

## At-Grade Railroad Crossing Program



The department oversees the Federal Highway Administration’s Highway-Rail Grade Crossing Program. This program addresses and implements safety improvements at highway-railroad grade crossings and aims to reduce the number of incidents/crashes. Eligible crossing work includes, but is not limited to signings, pavement markings, active warning devices, crossing surface improvements, grade separation, and crossing closures.

**Update:** Several statewide At-Grade Railroad crossing projects will complete closeout this quarter. Providence and Worcester Railroad (P&W) advertised a project to upgrade two at-grade railroad crossings in Cumberland and Providence which will be in construction in Summer 2023. QDC has advertised a project to upgrade 6 at-grade railroad crossings for construction this summer. Coordination has begun to address at-grade crossings in Newport County as well as with QDC and P&W to advance ongoing projects and identify future opportunities for collaboration on At-Grade Railroad Crossing projects.

## FHWA Ferry Boat Program



RIDOT oversees the Federal Highway Administration’s Ferry Boat Program. The program is formula-based and is to be used for the construction of ferry boats and ferry terminal facilities. Funds are made available for eligible projects through the State using the Bureau of Transportation Statistics National Census of Ferry Operators database. Each operator utilizes a publicly owned terminal facility.

**Update:** RIDOT continues to work with the three awarded ferry operators on eligible projects, including improvements for the Providence to Newport Ferry service. Site improvements at the 25 Portugal Parkway landing site are slated to begin scoping in Summer 2023. The Interstate Navigation Corporation will be advertising a few projects in Point Judith Narragansett this summer with construction anticipated to begin in Fall of 2023. Prudence Island Ferry has advertised a project for improvements to both Bristol and Prudence Island terminals with construction anticipated in Fall of 2023.

## Special Projects

### The Route 37 and I-295 Interchange Safety Improvements Project - Cranston



The Route 37 and I-295 interchange improvements will address the safety, congestion, and weaving concerns in the interchange area and along I-295 North up to Route 6, commonly referred to as the “Cranston Canyon”. Seven bridges are included in the project with six of those being either replacements or new and the seventh as a rehabilitation. I-295 N will be widened to a third lane to mitigate the heavy congestion in this area. Re-alignment of on-ramps at the interchange will eliminate traffic weaves and greatly reduce traffic congestion and improve safety.

**Update:** During the second quarter, the selected Design-Build team continued final design packages, submitted the RIDEM permit documents, continued bridge preservation work, installed the first construction traffic phase, and started bridge demolition. For the next quarter, the Design-Build team will complete design submissions, RIDEM issued the approved permit, continue bridge demolition and the first phase of construction activities.

### The Route 95 North Bound Viaduct Project - Providence



Interstate 95 North through the Providence Viaduct is the most congested highway in Rhode Island. This ongoing project includes the replacement of the I-95 Northbound Providence Viaduct with a new structure that will separate I-95 through traffic from those vehicles entering and exiting the interstate from Routes 6/10, Downtown, and Route 146. Rebuilding the interchange and eliminating weaves will greatly reduce traffic congestion and significantly improve safety. Three of the six bridges in the interchange that being replaced are structurally deficient, with five additional structures being rehabilitated.

**Update:** During this past quarter, both the new ramp bridge carrying traffic onto Route 146 North over I-95 and the new southern half of the Smith Street Bridge were opened to traffic. Construction continued on the concrete piers for the remaining portion of the new Viaduct structure, and installation of the new steel girders began. Next quarter, installation of the new steel girders will be completed, and concrete deck placements will begin. Demolition of the existing northern half of the Smith Street Bridge will begin once utilities are removed, demolition of the old 146 Ramp bridge over I-95 will continue, and construction of the north abutment for the new Atwells Ave on-ramp will begin.

### Pawtucket/Central Falls Transit Center



The Transit Center located at 300 Pine Street in Pawtucket provides unparalleled bus and commuter rail service to one of the most economically depressed areas in the State. The design and construction of the project began in October 2018 and opened to general bus and commuter rail ridership on January 23, 2023.

**Update:** RIDOT and the Design/Build team for the Pawtucket/Central Falls Transit Center continued through substantial completion and opening to the public this past quarter. Construction updates are posted monthly to the project website. Over the past quarter we compiled and distributed the punch list to the contractor, and they started the corrective work. All safety systems, accessible routes, and major construction items were completed for the opening. We anticipate continued construction of architectural amenities and punch list work to occur through the next quarter.

## The Route 6/10 Interchange

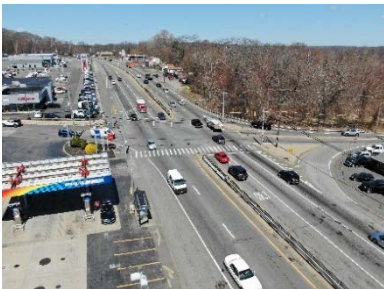


This project involves the replacement of nine bridge structures that comprise the 6/10 Interchange. Seven of the nine structures are structurally deficient. The project also involves construction of the “missing move” to allow Route 10 north traffic to access Route 6 west without traveling through Olneyville. In addition to state of good repair efforts, the project will include 1.4 miles of bike paths and make approximately an acre and a half of real estate suitable for development.

**Update:** During the third quarter of FFY 2023, RIDOT and the 6/10 Joint Venture continued construction and began some of the final phases of the project. There are 4 bridges remaining to be completed: Harris Ave over AMTRAK, Tobey Street over the

6/10 Connector, Ramp 504D which connects Rt 6 EB to Rt 10 SB, and the new pedestrian bridge over AMTRAK. Work on all those bridges continued along with highway work to prepare for the final layer of asphalt on the limited access highways. A weekend closure of Rt 6 EB was completed in June to allow for excavation of Rt 6 EB to its final grade. Drainage work and work on the new Union Ave offramp from Rt 10 SB continued. Paving and reconstruction of affected city streets also continued.

## Route 146 Reconstruction Project



This project has several major components, one of the largest of which is the construction of an overpass at the intersection of Rt. 146 at Sayles Hill Road. Presently, Rt. 146 is entirely access controlled except for a short stretch at Sayles Hill Road, where there is a major signalized intersection. The traffic signal introduces excessive delays during the morning and afternoon peak hours, and the new overpass will improve congestion on Rt. 146 while still maintaining access to Sayles Hill Road and local businesses through collector-distributor “CD” type roads. Other project components

include but are not limited to bridge rehabilitation, bridge replacement, improving the weave area at the Rt. 99/Rt. 146 and I-295 south exit, redesigning the Rt. 146/146A interchange to a diverging diamond interchange (DDI), installation of wrong way driving detection at select ramps, implementing bus-on-shoulder signs and pavement markings from Mineral Spring Avenue to I-95, installation of high friction surface treatment at select ramps, enhance the weigh station on Rt. 146 south by adding weigh-in-motion (WIM) technology, extending RIDOT’s fiber optic network for intelligent transportation systems/traffic monitoring from I-295 to the MA State line, and pavement resurfacing from I-295 to the MA State line.

**Update:** During the third quarter of FFY 2023, RIDOT and the DB team continued the final design process and utility coordination. Utility relocation continued after a winter hiatus, and new utility poles have been installed along Rt 146 NB. Work to move existing utilities underground at Sayles Hill Road also continued. Demolition of the 2 bridges that carry I-295 over Rt 146 began as well as partial demolition of the bridge that carries Rt 146 over Rt 146A.

## Special Projects

### Route 4 and Interstate 95 Interchange



This project involves two components: the completion of the interchange which connects Interstate 95 with Route 4 and the installation of three interchange ramps connecting Route 403 to local streets in North Kingstown. Currently, I-95 Southbound is connected to Route 4 Southbound and Route 4 Northbound is connected to I-95 Northbound. Traffic wishing to access Route 4 Southbound from I-95 Northbound or traffic wishing to access I-95 Southbound from Route 4 Northbound needs to use local roads. This additional traffic adds to congestion along Division Street and Route 2 and longer travel times for both freeway and local traffic.

The completion of missing access ramps to and from Route 403 will include the completion of the Route 403 interchange at West Davisville Road by adding an entrance ramp from West Davisville Road to Route 403 Eastbound and an exit ramp from Route 403 Westbound to West Davisville Road. Additionally, an entrance ramp from Post Road Southbound to Route 403 Westbound will be added to provide a direct connection between these two roadways. The addition of these interchange ramps will reduce traffic on Devils Foot Road between West Davisville Road and Post Road and eliminate the need for Post Road Southbound motorists to access Route 403 Westbound via Gate Road.

**Update:** During the third quarter of FFY 2023, RIDOT continued design work and coordination with RIDEM and Quonset Development Corporation. RIDOT is awaiting grant funding to schedule the construction of this project.

### Pell Bridge Ramps Phase 2



The reconstruction of the Newport Pell Bridge Approaches (Pell Bridge Ramps Phase 2) was started to address the need to make travel into Newport easy and safe and to provide an efficient ramp system with a smaller footprint. The project will reconstruct the Pell Bridge approach ramps to improve traffic circulation, reduce queuing on the Pell Bridge and reconnect neighborhoods which are currently segmented by the current highway infrastructure. With the realignment of the approach roads and removal of excess transportation infrastructure, the project will also spur economic development as it frees up parcels of land for new development opportunities.

**Update:** During this past quarter, the intersection at America's Cup and Farewell Street was reconfigured with new curb, drainage, sidewalks, and a new traffic signal allowing for a safer intersection. In addition, the Phase 3E traffic shift along Admiral Kalbfus from approximately the JT Connell Roundabout to Malbone Road was implemented which allows construction of the new roadway, stormwater treatment areas, and shared use path along the northern half of the roadway. Upcoming work through the summer will mostly focus on the roadwork along Admiral Kalbfus.

# Financials

## Expenditures

Actual operating expenditures totaled \$124 million in SFY22, \$27 million in Q4 SFY23, and \$120 million for SFY23.

### Operating Expenditures Detail (Actuals)

(In Thousands)	SFY22	SFY23Q1	SFY23Q2	SFY23Q3	SFY23Q4	SFY23
<b><u>Administrative</u></b>						
In-house Labor	\$ 27,240	\$ 7,328	\$ 6,056	\$ 8,448	\$ 7,576	\$ 29,408
Overhead Recovery	\$ (22,545)	\$ (6,022)	\$ (4,820)	\$ (11,023)	\$ (5,526)	\$ (27,391)
Consultant Contracts	\$ 2,745	\$ 1,445	\$ 382	\$ 820	\$ 283	\$ 2,930
Miscellaneous (Admin)	\$ 2,130	\$ 534	\$ 654	\$ 720	\$ 439	\$ 2,347
Pass Throughs	\$ 166	\$ -	\$ -	\$ 193	\$ 21	\$ 214
<b>Total Administrative</b>	<b>\$ 9,736</b>	<b>\$ 3,285</b>	<b>\$ 2,272</b>	<b>\$ (842)</b>	<b>\$ 2,793</b>	<b>\$ 7,508</b>
<b><u>Highway Maintenance**</u></b>						
In-house Labor	\$ 39,685	\$ 10,599	\$ 8,452	\$ 11,461	\$ 9,542	\$ 40,054
Overhead Costs	\$ 3,015	\$ 789	\$ 698	\$ 1,665	\$ 872	\$ 4,024
Consultant Contracts	\$ 24,690	\$ 5,705	\$ 6,051	\$ 5,793	\$ 4,768	\$ 22,317
Construction Contracts	\$ 300	\$ 22	\$ 81	\$ -	\$ 3	\$ 106
Miscellaneous (Highway Maint.)	\$ 5,606	\$ 1,068	\$ 410	\$ 4,125	\$ 3,423	\$ 9,026
Pass Throughs	\$ 492	\$ 11	\$ 613	\$ -	\$ 103	\$ 727
<b>Total Highway Maintenance</b>	<b>\$ 73,788</b>	<b>\$ 18,194</b>	<b>\$ 16,305</b>	<b>\$ 23,044</b>	<b>\$ 18,711</b>	<b>\$ 76,254</b>
<b><u>Safety</u></b>						
In-house Labor	\$ 729	\$ 180	\$ 184	\$ 249	\$ 158	\$ 771
Overhead Costs	\$ 491	\$ 118	\$ 120	\$ 300	\$ 123	\$ 661
Consultant Contracts	\$ 2,624	\$ 716	\$ 617	\$ 673	\$ 434	\$ 2,440
Miscellaneous (Safety)	\$ 101	\$ 28	\$ 15	\$ 88	\$ 21	\$ 152
Pass Throughs	\$ 4,406	\$ 799	\$ 1,372	\$ 1,499	\$ 1,270	\$ 4,940
<b>Total Safety</b>	<b>\$ 8,351</b>	<b>\$ 1,841</b>	<b>\$ 2,308</b>	<b>\$ 2,809</b>	<b>\$ 2,006</b>	<b>\$ 8,964</b>
<b><u>Transit Operations</u></b>						
Transit Operations	\$ 14,911	\$ 6,346	\$ 2,814	\$ 3,466	\$ 2,333	\$ 14,959
<b>Total Transit Operations</b>	<b>\$ 14,911</b>	<b>\$ 6,346</b>	<b>\$ 2,814</b>	<b>\$ 3,466</b>	<b>\$ 2,333</b>	<b>\$ 14,959</b>
<b><u>Winter Operations</u></b>						
In-house Labor	\$ 1,768	\$ -	\$ 621	\$ 2,112	\$ -	\$ 2,733
Miscellaneous (Winter)	\$ 15,415	\$ 1,559	\$ 2,179	\$ 4,276	\$ 1,649	\$ 9,663
<b>Total Winter Operations</b>	<b>\$ 17,183</b>	<b>\$ 1,559</b>	<b>\$ 2,800</b>	<b>\$ 6,388</b>	<b>\$ 1,649</b>	<b>\$ 12,396</b>
<b><u>Emergency Repair Projects***</u></b>						
In-house Labor	\$ 54	\$ 2	\$ 3	\$ 3		\$ 8
Overhead Costs	\$ -					\$ -
Consultant Contracts	\$ 19	\$ -				\$ -
Construction Contracts	\$ 225	\$ 57		\$ 24		\$ 81
Miscellaneous (Emergency)	\$ 34	\$ -				\$ -
Pass Throughs	\$ 2	\$ -				\$ -
<b>Total Emergency Repair Project</b>	<b>\$ 334</b>	<b>\$ 59</b>	<b>\$ 3</b>	<b>\$ 27</b>	<b>\$ -</b>	<b>\$ 89</b>
<b>Total Operating Expenditures</b>	<b>\$ 124,303</b>	<b>\$ 31,284</b>	<b>\$ 26,502</b>	<b>\$ 34,892</b>	<b>\$ 27,492</b>	<b>\$ 120,170</b>

\*Expenditures derived from RIDOT's Oracle Financial Management System

\*\*Includes bridge inspection, striping, crack sealing and chip sealing

\*\*\*Expenditures directly related to emergency projects were not tracked separately until the 3rd Qtr of SFY16. Prior to that the expenditures for emergency projects were reported within the capital projects section. Based on new coding criteria for immediate need projects beginning during 1st Qtr of SFY 20, funding now reflects accurate expenditures.

\*\*\*\*Administrative expenses were down during 3rd Qtr of SFY20 due to the processing of the annual ICR adjustment.

\*\*\*\*\*The increase in administrative consultant costs during 2nd Qtr of SFY21 marks the beginning of the court proceedings of the tolling lawsuit.

## Expenditures

Actual capital expenditures totaled \$485 million in SFY22, \$177 million in Q4 SFY23, and \$588 million for SFY23.

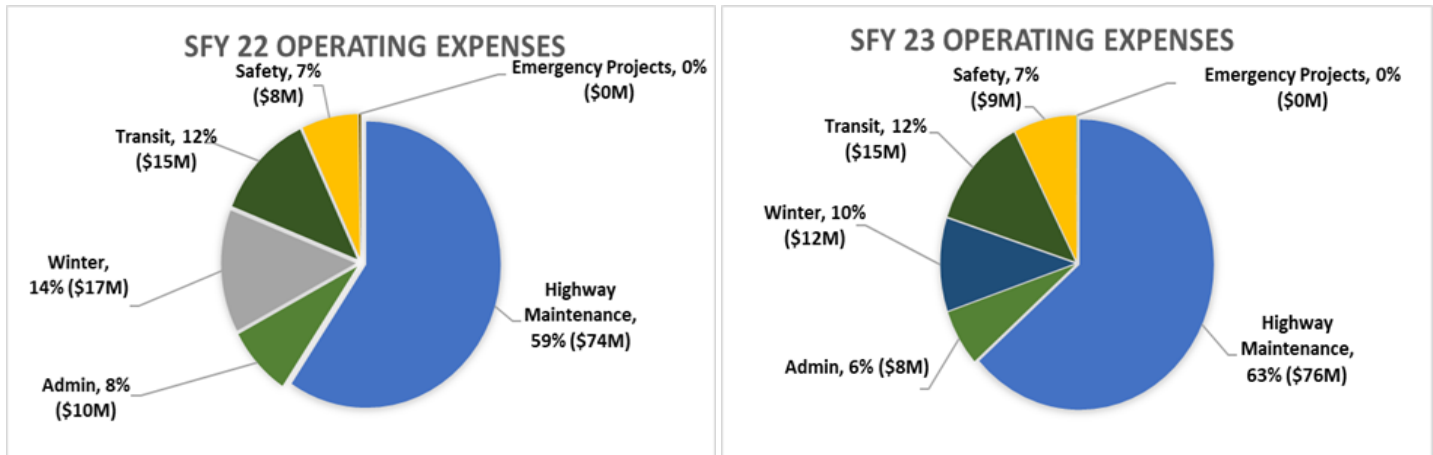
### Capital Expenditures Detail (Actuals)

(In Thousands)	SFY22	SFY23Q1	SFY23Q2	SFY23Q3	SFY23Q4	SFY23
<b>Debt</b>						
Debt	\$ 74,461	\$ 2,193	\$ 14,622	\$ 1,987	\$ 55,593	\$ 74,395
<b>Total Debt Service</b>	<b>\$ 74,461</b>	<b>\$ 2,193</b>	<b>\$ 14,622</b>	<b>\$ 1,987</b>	<b>\$ 55,593</b>	<b>\$ 74,395</b>
<b>Planning</b>						
In House Labor	\$ 3,735	\$ 941	\$ 695	\$ 875	\$ 455	\$ 2,966
Overhead Recovery	\$ 1,980	\$ 468	\$ 364	\$ 965	\$ 286	\$ 2,083
Consultant Contracts	\$ 3,115	\$ 678	\$ 1,167	\$ 1,244	\$ 1,817	\$ 4,906
Miscellaneous (Planning)	\$ 1,950	\$ 438	\$ 352	\$ 362	\$ 424	\$ 1,576
<b>Total Planning</b>	<b>\$ 10,780</b>	<b>\$ 2,525</b>	<b>\$ 2,578</b>	<b>\$ 3,446</b>	<b>\$ 2,982</b>	<b>\$ 11,531</b>
<b>Capital Projects</b>						
In House Labor	\$ 30,991	\$ 8,836	\$ 7,144	\$ 7,706	\$ 6,433	\$ 30,119
Overhead Recovery	\$ 16,784	\$ 4,620	\$ 3,605	\$ 7,979	\$ 4,205	\$ 20,409
Consultant Contracts	\$ 28,113	\$ 7,854	\$ 7,686	\$ 8,934	\$ 9,889	\$ 34,363
Construction Contracts	\$ 271,000	\$ 112,259	\$ 90,243	\$ 78,936	\$ 88,568	\$ 370,006
Miscellaneous (Capital Projects)	\$ 45,680	\$ 9,642	\$ 15,000	\$ 8,248	\$ 7,941	\$ 40,831
<b>Total Capital Projects</b>	<b>\$ 392,568</b>	<b>\$ 143,211</b>	<b>\$ 123,678</b>	<b>\$ 111,803</b>	<b>\$ 117,036</b>	<b>\$ 495,728</b>
<b>Capital Pass Throughs</b>						
Pass Throughs	\$ 6,989	\$ 1,575	\$ 1,764	\$ 1,589	\$ 1,761	\$ 6,689
<b>Total Capital Pass Throughs</b>	<b>\$ 6,989</b>	<b>\$ 1,575</b>	<b>\$ 1,764</b>	<b>\$ 1,589</b>	<b>\$ 1,761</b>	<b>\$ 6,689</b>
<b>Total Capital Expenditures</b>	<b>\$ 484,798</b>	<b>\$ 149,504</b>	<b>\$ 142,642</b>	<b>\$ 118,825</b>	<b>\$ 177,372</b>	<b>\$ 588,343</b>
<b>Total RIDOT Expenditures</b>	<b>\$ 609,101</b>	<b>\$ 180,788</b>	<b>\$ 169,144</b>	<b>\$ 153,717</b>	<b>\$ 204,864</b>	<b>\$ 708,513</b>

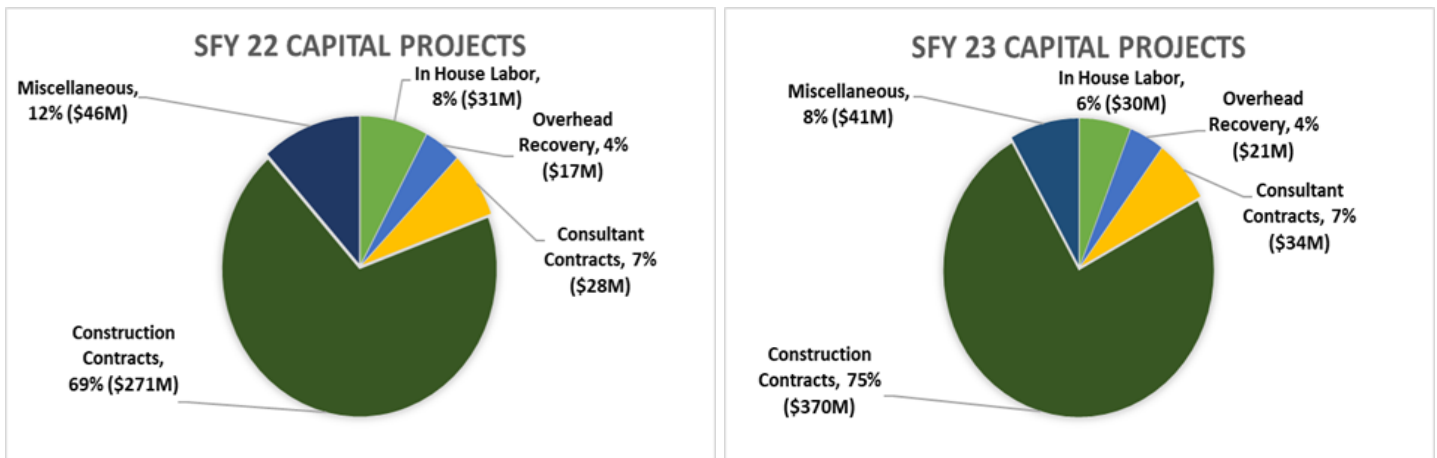
\* Beginning in the 4th Qtr of SFY 19, Garvee Debt service payments are included in the Total Debt Service.

## Expenditures

**OPERATING EXPENDITURES:** Operating expenditures are costs associated with the day-to-day operations of RIDOT. These costs include Highway Maintenance, Safety Programs, Administrative Expenses, Winter Operations, and Commuter Rail expenses.

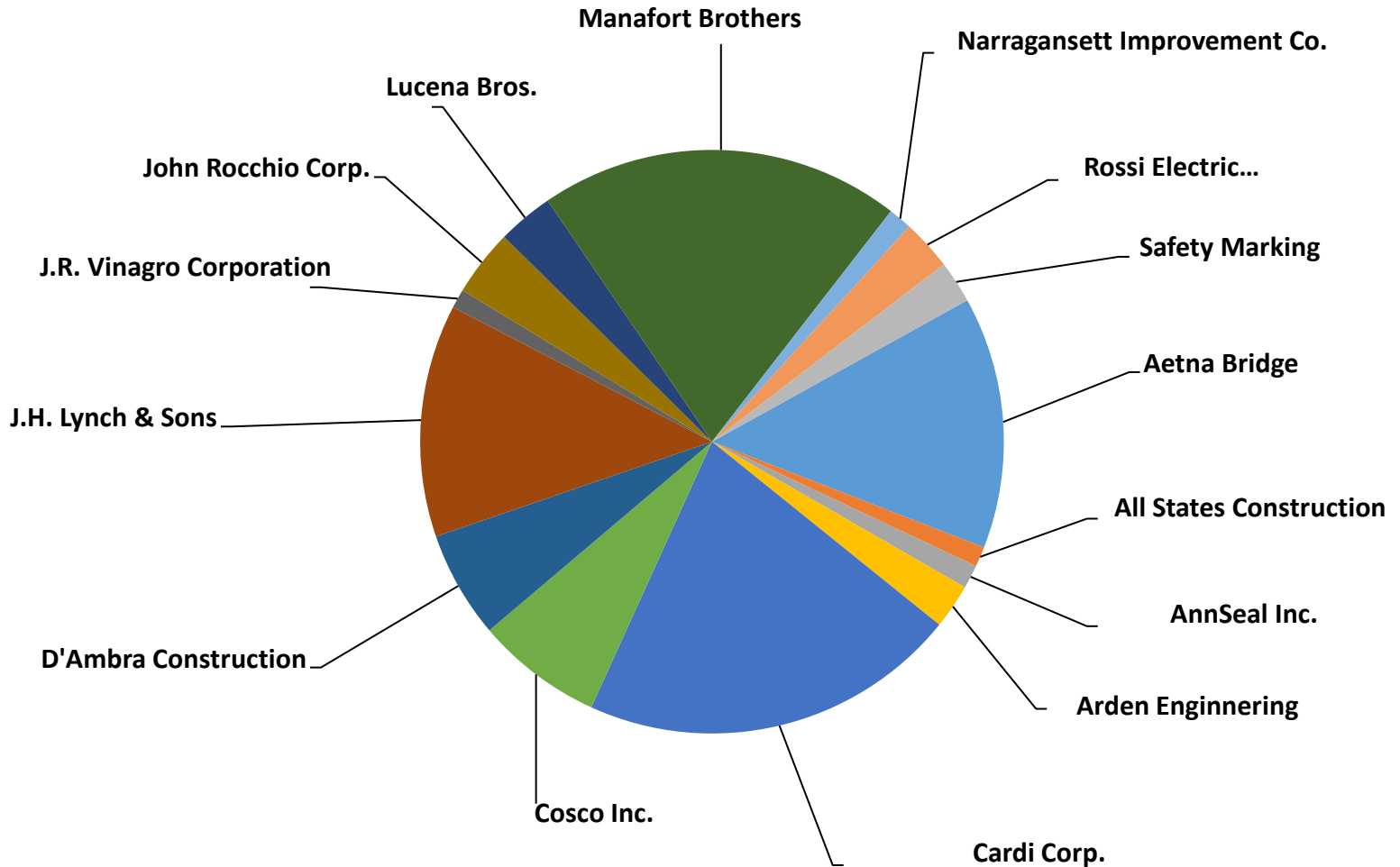


**CAPITAL EXPENDITURES:** Capital expenditures include design, construction and oversight costs associated with capital projects, expenditures to plan capital projects and debt service on capital debt. Some operating expenditures associated with RIDOT overhead are also billed to capital projects. Capital costs other than those allocated to the construction contracts are considered “soft costs.” RIDOT’s 10 Year Plan calls for the reduction of soft costs over time to bring this portion of capital expenditures down to industry standards through the implementation of project management.



## Construction Contract Awards

**FFY 2023 (as of June 30, 2023)\***



\*Chart contains only contractors awarded over \$500,000 in construction contracts as of June 30, 2023.

# Glossary

## Date Conventions:

**CY:** Calendar Year (January 1 – December 31)

**FFY:** Federal Fiscal Year (October 1 – September 30)

**SFY:** State Fiscal Year (July 1 – June 30)

**Safety** Information is collected and reported on a calendar year (**CY**) basis

**Financial** Information is reported on a State Fiscal Year (**SFY**) basis

All other information is reported on a Federal Fiscal Year (**FFY**) basis

## Technical Definitions:

**Emergency Awards:** The Department occasionally faces the need for urgent response to certain situations. As defined by State Purchasing Regulations (9.6.2), an emergency is defined as follows: “An emergency shall mean a situation to which an urgent response is required. Immediate dangers to health and safety, threats to property and necessary functions, and failures of critical equipment constitute emergencies”

**Advertise:** The date of the public notice of the invitation for bids or request for proposals, typically posted on the State Purchasing’s website

**At NTP:** Notice to Proceed occurs when a Purchase Order is provided by the Owner to the Contractor authorizing work to begin

**Substantial Completion:** Substantial completion is reached when the work is completed so it can be safely and effectively used by the public. This may include the entire Project or a unit, or portion of the work such as a structure, an interchange, or section of road or pavement

**Final Completion:** Final completion is reached when all contract work is completed, including punchlist work, and all certifications have been received by the Department

**LTD:** Life to Date

**Change Orders:** A written order to the Contractor covering contingencies, extra work, increases or decreases in contract quantities, and additions or alterations to the plans or specifications within the scope of the contract, and establishing the basis of payment and time adjustments for the work affected by said change

## Industry Definitions:

**NHTSA:** National Highway Traffic and Safety Administration

**OHS:** Office of Highway Safety

**FARS:** The Fatality Analysis Reporting System is a nationwide census providing NHTSA, Congress and the American public yearly data regarding fatal injuries suffered in motor vehicle traffic crashes

**Pass throughs:** Capital pass through expenditures are costs that are not directly related to capital projects but instead passed on to other entities such as other State agencies or local cities and towns for capital related costs

**CMAQ:** Congestion Mitigation and Air Quality

**NBI:** National Bridge Inventory; the Federal Highway Administration identifies bridges that are greater than 20ft and used for vehicular traffic.

**NHS:** National Highway System is a network of strategic highways with the US, including the Interstate Highway System and other roads service major airports, ports, rail or truck terminals, railway stations, pipeline terminals and other strategic transport facilities.

# RIDOT System Quick Facts



**1,201**

Bridges (5+ feet) as of 6/30/23



More than

**3,000**

Lane miles of road



**6** rail stations

**18** park and rides



**104,000**

Traffic devices



**34,000**

Catch basins (approximate)



**684**

Total employees

(as of 6/30/23)