



Pell Bridge Ramps Phase 2

RIDOT Public Outreach Meeting

March 13, 2023



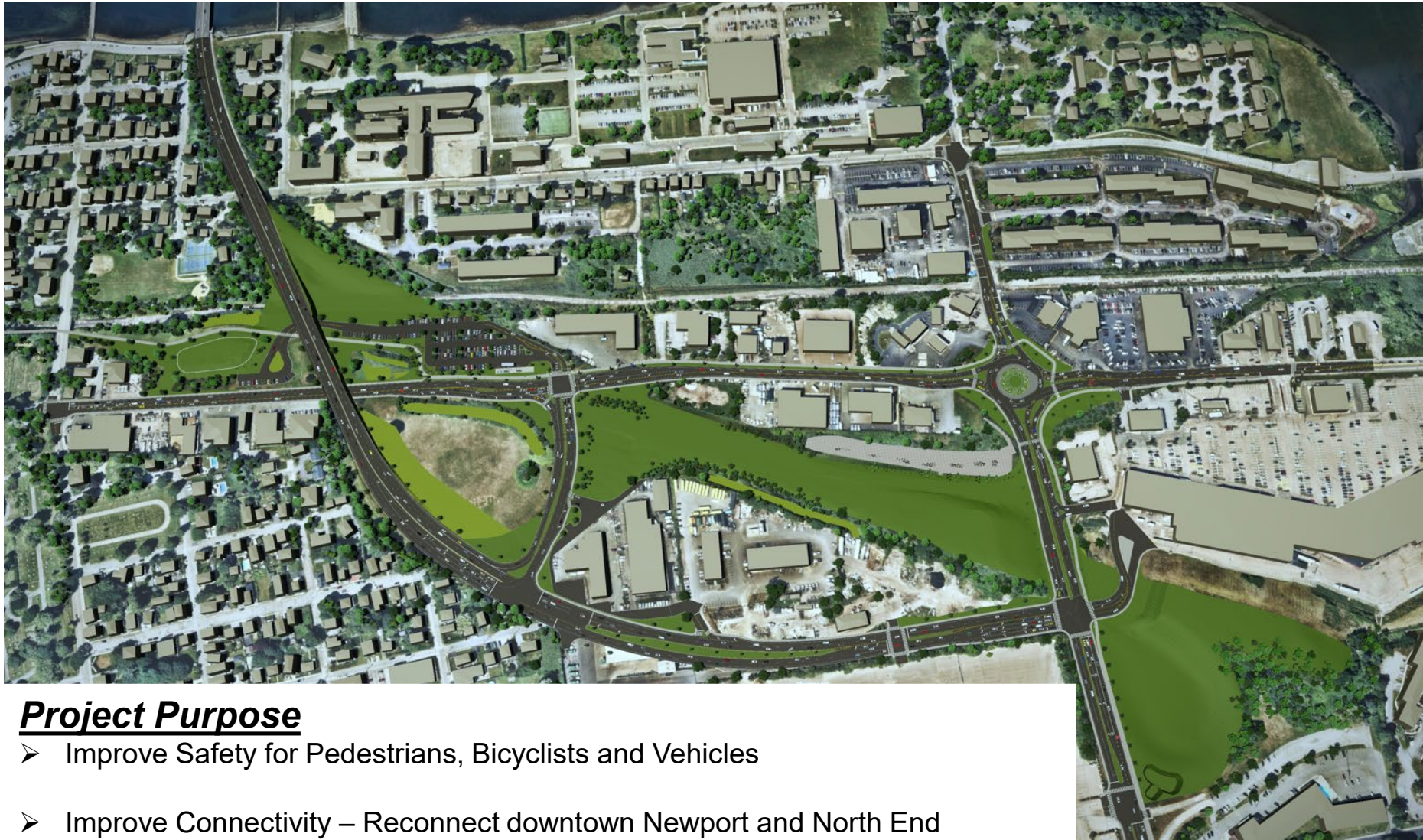
Welcome & Meeting Overview

- 30 - Minute Presentation (Jody Richards, RIDOT Project Manager)
- Board Station Session/Q&A
 - Jody Richards – RIDOT Project Manager
 - Peter Pavao – VHB Director of Transportation Systems
 - Rick Rhodes – VHB Director of Highway Design

Pell Bridge Ramps Phase 1 & 2 - Partnerships and Support



Pell Bridge Ramps Phase 2 – Project Purpose



Project Purpose

- Improve Safety for Pedestrians, Bicyclists and Vehicles
- Improve Connectivity – Reconnect downtown Newport and North End
- Free up parcels no longer needed for transportation – (*Innovation Hub, Blue Economy, North End Plan, Housing, Open Space, etc.*)

Pell Bridge Ramps Phase 2 – Construction Recap

Construction Phase began June 2021 and to date we have:

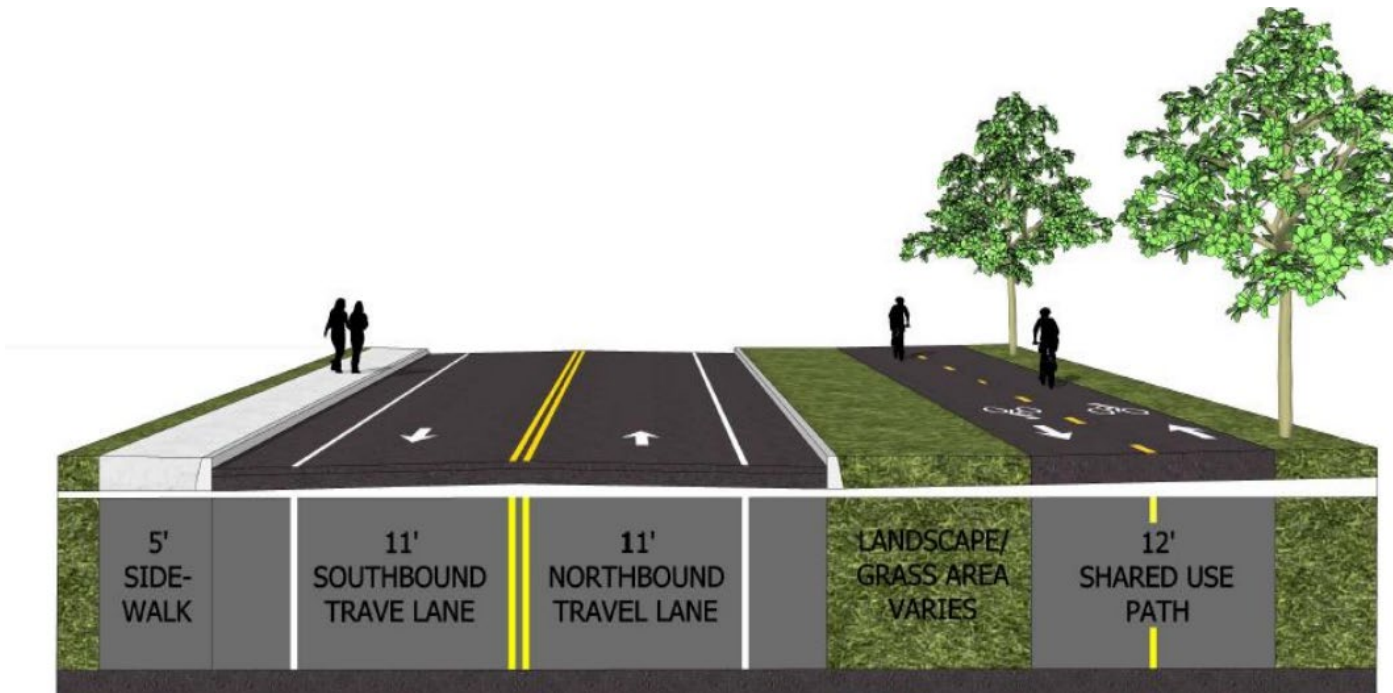
- *Constructed a new safer modern roundabout and two new roadways (Halsey Boulevard and JT Connell Connector)*



Pell Bridge Ramps Phase 2 – Construction Recap

Construction Phase began June 2021 and to date we have:

- *Constructed a new safer modern roundabout and two new roadways (Halsey Boulevard and JT Connell Connector)*
- *Constructed over 1.5 miles of new sidewalks and shared use paths for pedestrians and bicyclists*



Pell Bridge Ramps Phase 2 – Construction Recap

Construction Phase began June 2021 and to date we have:

- *Constructed a new safer modern roundabout and two new roadways (Halsey Boulevard and JT Connell Connector)*
- *Constructed over 1.5 miles of new sidewalks and shared use paths for pedestrians and bicyclists*
- *Installed 71 new catch basins and over 3,000 linear feet of new drainage pipe across the project alignment for improved stormwater drainage*



Pell Bridge Ramps Phase 2 – Construction Recap

Construction Phase began June 2021 and to date we have:

- *Constructed a new safer modern roundabout and two new roadways (Halsey Boulevard and JT Connell Connector)*
- *Constructed over 1.5 miles of new sidewalks and shared use paths for pedestrians and bicyclists*
- *Installed 71 new catch basins and over 3,000 linear feet of new drainage pipe across the project alignment for improved stormwater drainage*
- *We have provided over 50 project updates to our community stakeholder list describing upcoming work. Including this presentation, we have performed 3 community meetings for construction and a total of 10 meetings since design commenced.*



Newport City Hall Meeting Photo Credit: Senator Dawn Euer



Construction Phase began June 2021 and to date we have:

- *Constructed a new safer modern roundabout and two new roadways (Halsey Boulevard and JT Connell Connector)*
- *Constructed over 1.5 miles of new sidewalks and shared use paths for pedestrians and bicyclists*
- *Installed 71 new catch basins and over 3,000 linear feet of new drainage pipe across the project alignment for improved stormwater drainage*
- *We have provided over 50 project updates to our community stakeholder list describing upcoming work. Including this presentation, we have performed 3 community meetings for construction and a total of 10 community meetings since design commenced.*
- *Our Customer Service and Outreach Sections have responded to over 100 constituent questions or comments*

Pell Bridge Ramps Phase 2 – Current Temporary Traffic Pattern

Current Traffic Phase Extends until Early Spring

- Installed during winter when traffic counts are low to minimize impact to transportation users
- No Winter Shutdown - this project works through winter (Newport's "offseason") to mitigate impact to businesses.



Four Main Objectives this Winter/Early Spring

- 1.) Connect JT Connell (New Intersection allows straight connection from Van Zandt to Roundabout)
- 2.) Create widened on-ramp for traffic coming from Downtown Newport (slip lane)
- 3.) Demo Admiral Kalbfus Overpass Bridge
- 4.) Re-align Farewell Street/America's Cup Intersection



Pell Bridge Ramps Phase 2 – Objective No. 1 Connect JT Connell



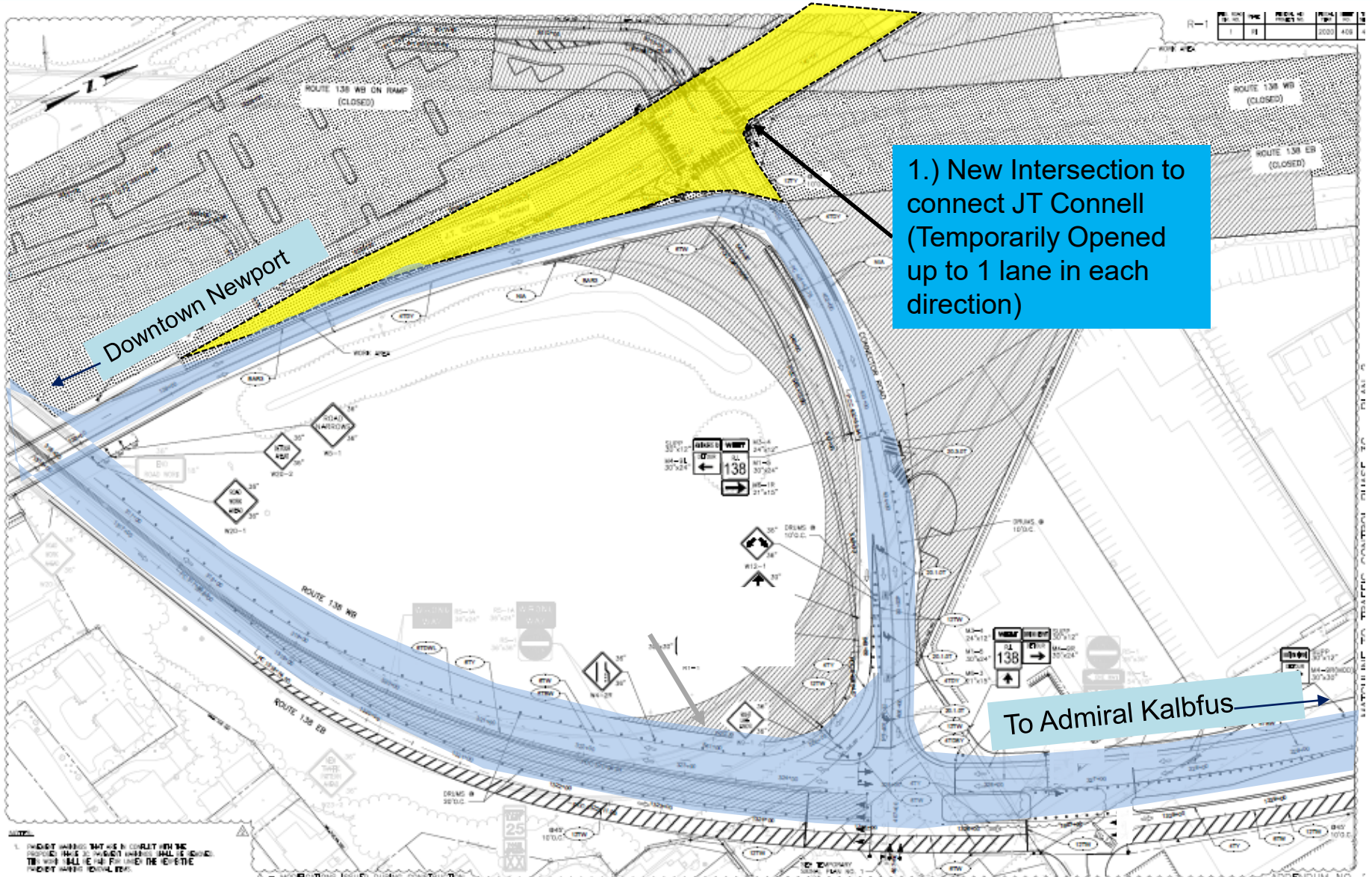
Circa 1967 – JT
Connell Highway

Ref: <https://collections.newporthistory.org/Detail/objects/1262>

Pell Bridge Ramps Phase 2 – Objective No. 1 Connect JT Connell



Pell Bridge Ramps Phase 2 – Objective No. 1 Connect JT Connell



Pell Bridge Ramps Phase 2 – Objective 1 Connect JT Connell

To Roundabout

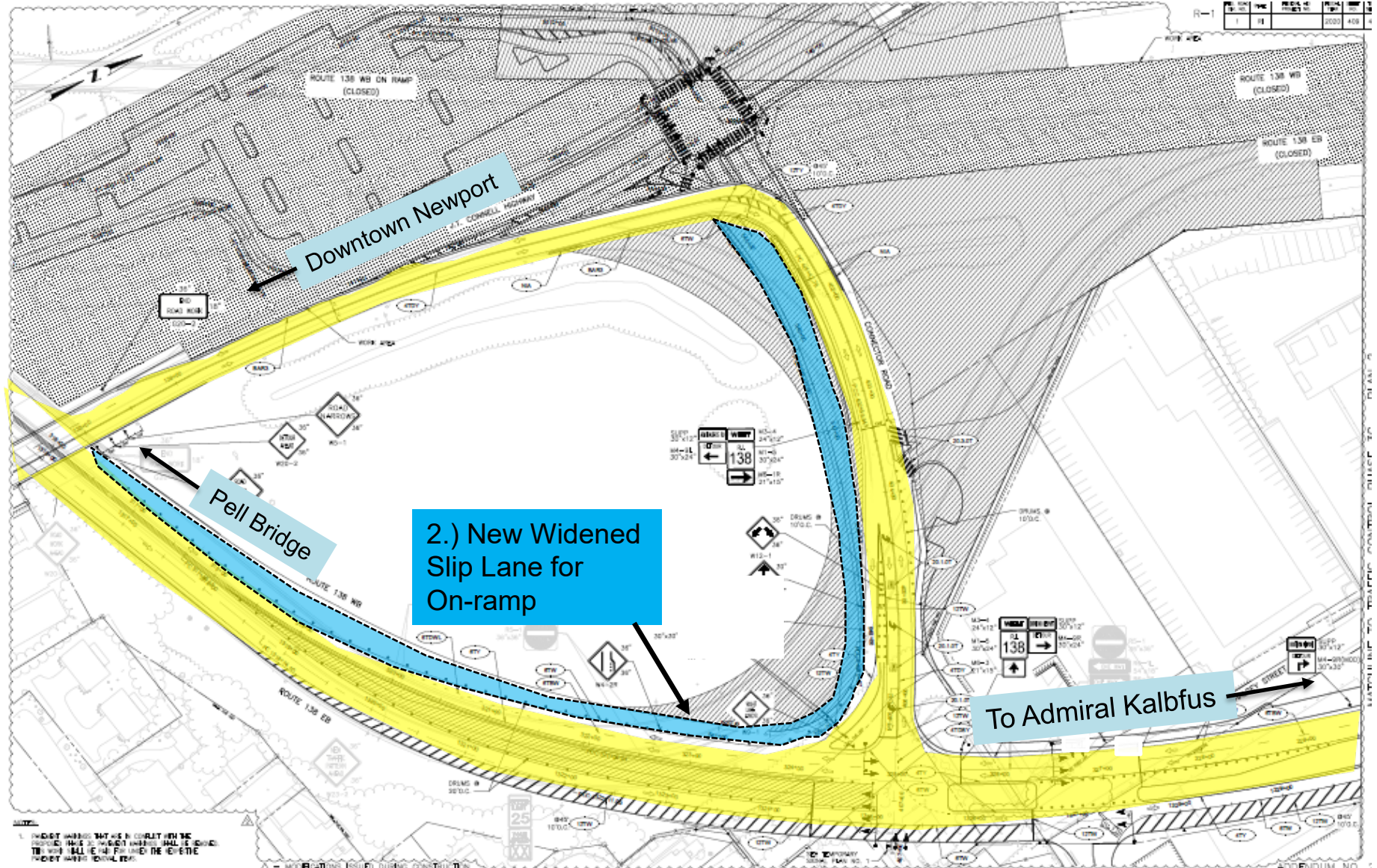


To Farewell &
Downtown Newport

Pell Bridge Ramps Phase 2 – Objective 1 Connect JT Connell



Pell Bridge Ramps Phase 2 – Objective No. 2 New Widened On-Ramp

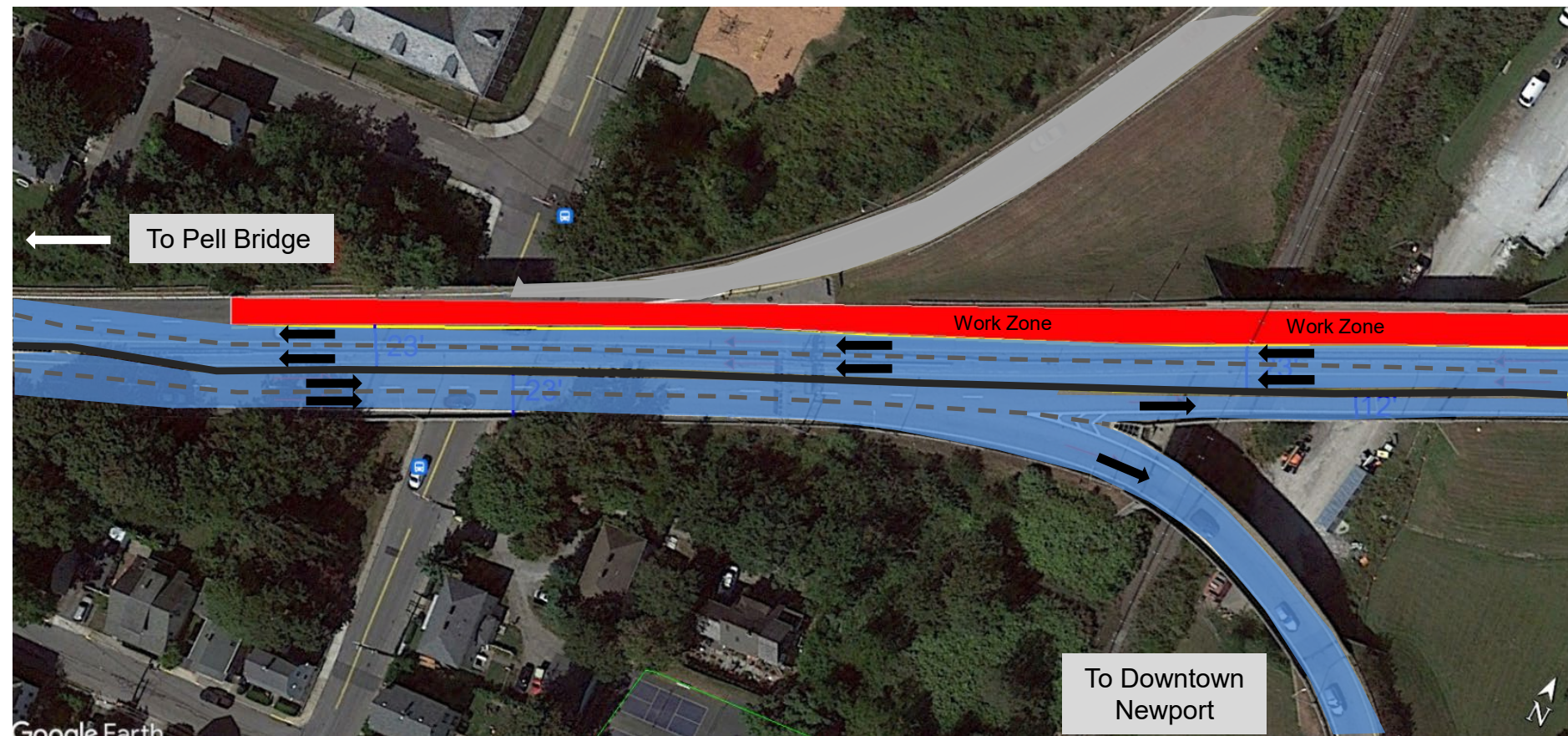


2.) New Widened Slip Lane for On-ramp

Pell Bridge Ramps Phase 2 – Objective 2 New Widened On-Ramp



Pell Bridge Ramps Phase 2 – Objective No. 2 New Widened On-Ramp

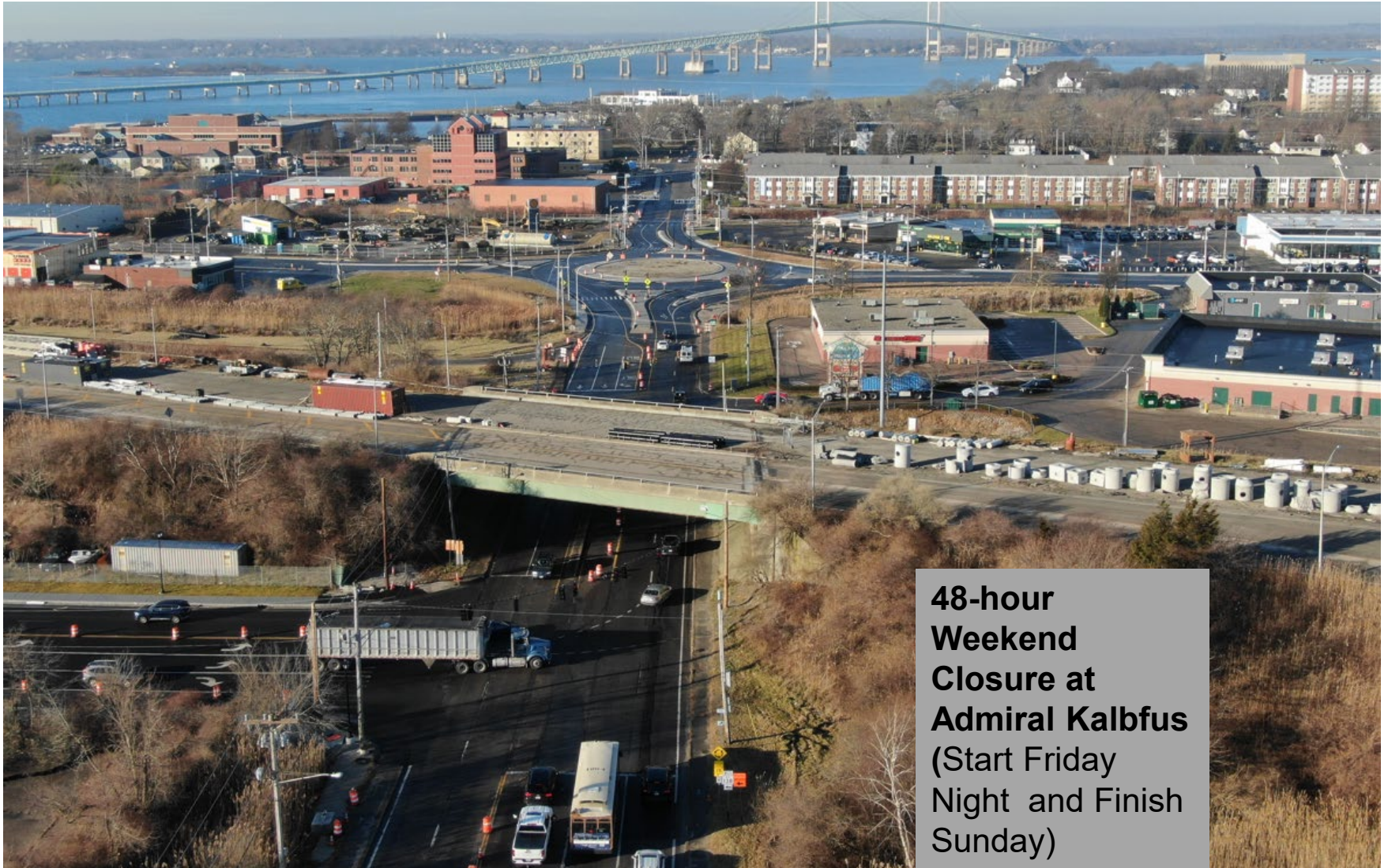


Traffic Pattern at the Overpass Bridges

Pell Bridge Ramps Phase 2 – Objective 3 Demo Road to Nowhere



Pell Bridge Ramps Phase 2 – Objective 3 Demo Road to Nowhere



**48-hour
Weekend
Closure at
Admiral Kalbfus
(Start Friday
Night and Finish
Sunday)**

Pell Bridge Ramps Phase 2 – Objective 4: Realign Farewell Street



Upgrade traffic signal – Improved Circulation and Safety

Pell Bridge Ramps Phase 2 – Look Ahead for Spring/Summer 2023

Spring/Summer 2023 – Anticipated Activities

➤ **Admiral Kalbfus Improvements**

(Traffic shifts required to construct New Turning Lane, Median, Drainage, Sidewalks, Shared Use Path & Plaza Entrance)



➤ **Malbone Road and Girard Ave**

(New Signal – Provides pedestrian crossings on all approaches and Up to 75% reduction in broadside and left-turn crashes)



Pell Bridge Ramps Phase 2 – Look Ahead for Summer 2023

Spring/Summer 2023 – Anticipated Activities

- **JT Connell Improvements & Park and Ride**
(Installation of Stormwater Improvements, Paving, Sidewalks)



Spring/Summer 2023 – Anticipated Activities

- **Shared Use Path from America's Cup to Braman Cemetery (Approx. 1/2 mile)**



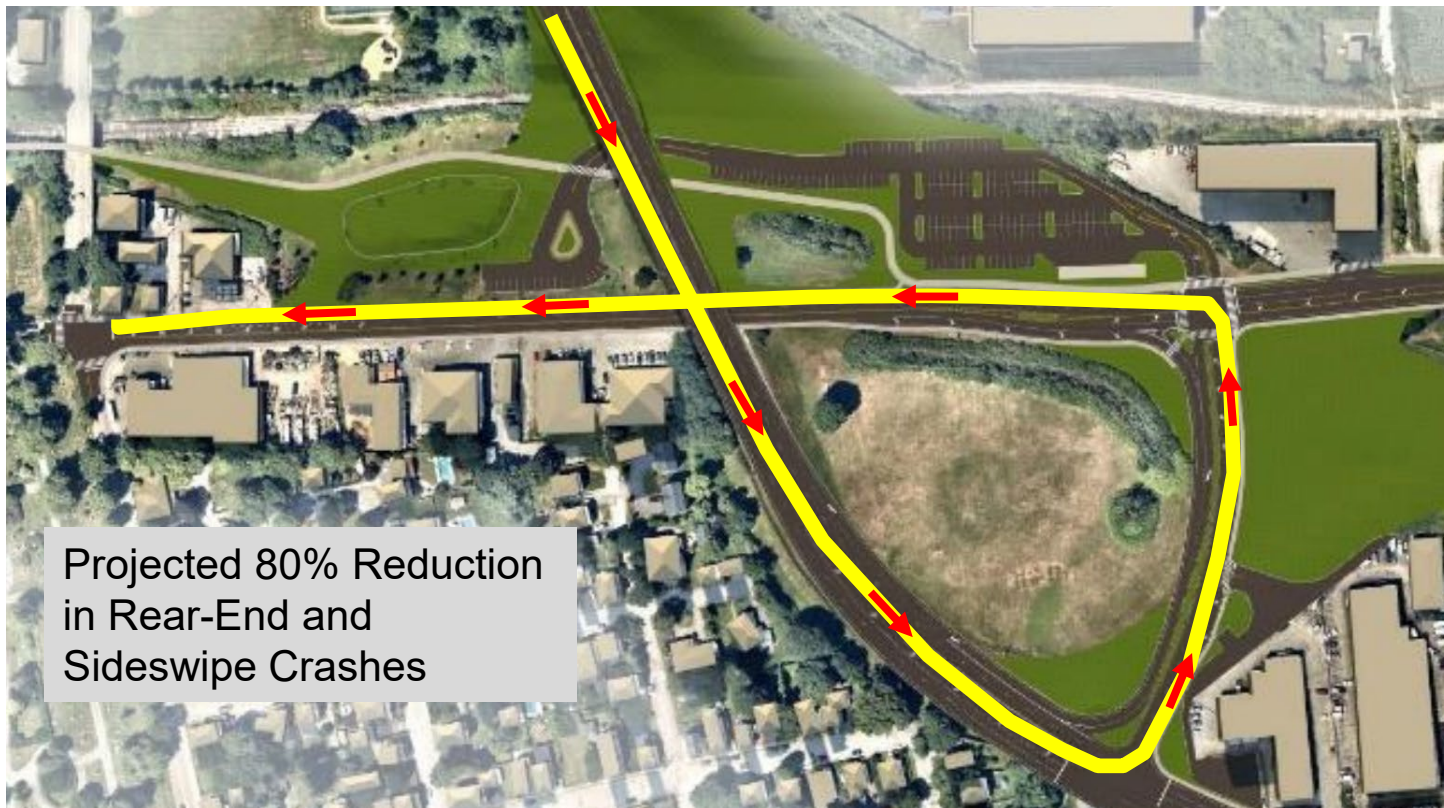
- **Site Wide Stormwater Improvements & Wetland Restoration**



Pell Bridge Ramps Phase 2 – Look Ahead for Fall 2023

Fall 2023 – Anticipated Activities

- *Demolition of Downtown Ramp - Downtown Traffic will utilize Connector Road*



Pell Bridge Ramps Phase 2 – Look Ahead for Fall 2023

Fall 2023 – Anticipated Activities

- *Southern end of Park and Ride & Dog Park*
- *Intersection Work and New Signal at Van Zandt*
- *Site Wide Landscaping*



Pell Bridge Ramps Phase 2 – New Alignment




Simple, Smarter Roads for Newport
Substantial Completion: 2024

<https://www.dot.ri.gov/projects/pellbridgeramps/>

HOME / RIDOT FEATURED PROJECTS / RECONSTRUCTION OF THE NEWPORT PELL BRIDGE APPROACHES

Community Outreach Meeting Scheduled for March 13 | [LEARN MORE](#)

Newport Pell Bridge Approaches



Reconstruction of the Newport Pell Bridge Approaches

SECTION LINKS

- Clean Rhodes RI Litter Campaign
- RIDOT Featured Projects ▾
- Statewide Programs & Initiatives
- RI Local Technical Assistance Program
- Stormwater Management
- Adopt-A Sponsorships

Have Questions?

RIDOT Constituent Services

2 Capitol Hill
Providence, RI 02903
Phone: 401-222-2450
Toll Free: 1-844-DOT-ROAD
[✉ help@ridot.net](mailto:help@ridot.net)

The Project

In the 1960s the completed, which

Sign up for Project Updates!

Receive Email Updates on the Pell Bridge Ramps Project

Email

By submitting this form, you are consenting to receive marketing emails from: State of Rhode Island, Two Capitol Hill, Providence, RI, 02903, US, <http://dot.ri.gov>. You can revoke your consent to receive emails at any time by using the SafeUnsubscribe® link, found at the bottom of every email. Emails are serviced by Constant Contact.

[Sign Up!](#)

Constant Contact

- Project Info & Graphics
- Sign up for Project Updates



For Additional Questions or Info:

Jody Richards, P.E.
RIDOT Project Manager II
jody.richards@dot.ri.gov
401-408-3912

Sam Guglielmi
RIDOT Community Outreach
sam.guglielmi@dot.ri.gov
401-256-1799