

BRIDGE TOLLING PROJECT:

TOLL LOCATIONS 3, 4 & 6 THROUGH 13



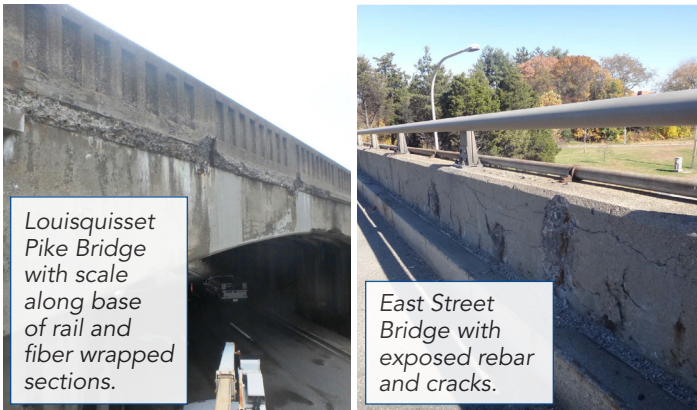
Fact Sheet – May 2018

RIDOT Truck Tolling Program

Rhode Island Department of Transportation's (RIDOT) RhodeWorks truck only tolling program includes charging a toll on a tractor or truck tractor as defined in 23 CFR 658.5, pulling a trailer to help fund repairs to its roads and bridges. Toll systems will be built along five major roads throughout the state.



Roosevelt Ave Bridge – East Parapet looking Southwest. Vertical cracks with efflorescence.



Louisquisset Pike Bridge with scale along base of rail and fiber wrapped sections.

East Street Bridge with exposed rebar and cracks.

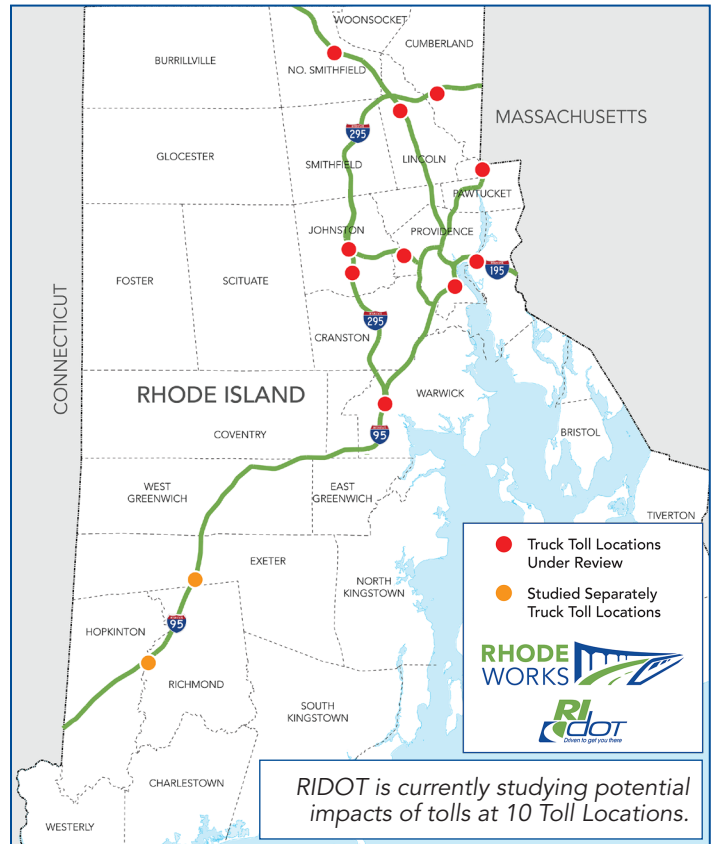
Tolls on applicable trucks will be collected at 12 locations. Two locations in southern Rhode Island along I-95 have been built. Ten additional locations are being designed and are under review. The Federal Highway Administration (FHWA) will make a determination about impacts from the tolling program. Pending approvals from FHWA, RIDOT anticipates collecting tolls in 2018.

Who Will Operate the Toll Gantries?

RIDOT selected Kapsch TrafficCom to design, build, operate and maintain the system for 10 years. RIDOT will set the toll rates in accordance with the mandates of the legislation.

How Will Tolls Be Collected?

The tolling system is fully electronic. Each gantry will be equipped with devices to read a truck's transponder and deduct the toll. Trucks without a transponder will be billed by mail using a camera that records license plates.



Will the Toll Systems Result in Impacts to the Environment or the Public?

RIDOT is preparing an Environmental Assessment (EA), a study and evaluation of potential impacts from construction and operation of the toll systems. The EA will be reviewed by FHWA and posted for public comment.

RIDOT is developing the EA for toll locations 3, 4 & 6 through 13 and will evaluate the potential impacts to the natural and human environment from the No Action (no gantries built) and the Proposed Action (toll gantries). The gantries will be built within the existing highway right-of-way with minimal ground disturbance. Consequently, very few direct impacts from gantry construction are anticipated.



Rural toll gantry rendering.



Urban toll gantry rendering.

BRIDGE TOLLING PROJECT: TOLL LOCATIONS 3,4 & 6 through 13



The EA will also evaluate indirect impacts of the toll systems including impacts caused by trucks that choose to leave the highway and use an alternate route to avoid the toll. The EA will be made available for public review in 2018.

RhodeWorks Bridge Tolling Program: An Overview

The tolling program is part of the RhodeWorks legislation which became law in February of 2016 as a way to rebuild Rhode Island's infrastructure. Toll rates have not been set, but tolls on trucks with Radio-frequency identification



(RFID) are limited to once per toll facility, per day in each direction. Tolls for trucks are also limited to a \$20 total for a border-to-border through trip on I-95 from Connecticut to Massachusetts and will not exceed \$40 per day for RFID equipped vehicles.

The legislation authorizing the tolling specifically prohibits tolls on cars and smaller trucks. The project will allow RIDOT to collect tolls for bridge repairs and improvements. Rhode Island ranks last in the U.S. in overall bridge condition. Increased revenue from tolls, federal funds and other revenue sources will allow RIDOT to repair and rebuild over 150 structurally deficient bridges and make repairs to 500 more bridges over 10 years. Without the new revenue, about half of the state's bridges will be structurally deficient by 2025. The state will realize significant savings by addressing the problem now instead of waiting.

Proposed Toll Locations and Associated Bridges

BRIDGE NAME	RTE #	CITY OR TOWN	PROPOSED BRIDGE IMPROVEMENT
Toll Gate	I-95	Warwick	Replace Superstructure
Centerville Road	I-95	Warwick	New Bridge
Oxford Street	I-95	Providence	Replace Superstructure
Roosevelt Ave	I-95	Pawtucket	Replace Superstructure
East Street	I-95	Pawtucket	Replace Superstructure
Aqueduct	I-295	Cranston	Replace Superstructure
Plainfield Pike	I-295	Cranston	Replace Superstructure
Greenville Ave	I-295	Johnston	Replace Superstructure
Hartford Pike	I-295	Johnston	Replace Deck and Strengthen
US 6	Rte 6	Johnston	Replace Superstructure
Scott Road	I-295	Cumberland	Replace Deck and Strengthen
Leigh Road	I-295	Cumberland	Replace Deck and Strengthen
Washington South	I-195	Providence and East Providence	Repair and Rehabilitate
Washington North	I-195	Providence and East Providence	Repair and Rehabilitate
Louisquisset Pike	Rte 146	Lincoln	New Bridge
Farnum Pike	Rte 146	No. Smithfield	New Bridge
Woonasquatucket River	Rte 6	Providence	Repair and Rehabilitate

Sign Up for Tolling Project Updates and Information on Construction Activities

For more information or to sign up for e-mail notices during construction visit RhodeWorks at <http://www.dot.ri.gov/rhodeworks>.

Tell us what you think!

Fill out the comment form on the RhodeWorks web page to send a comment or ask a question.

RIDOT operates its programs, services, and activities in compliance with federal nondiscrimination laws. If you have questions or concerns, please contact the Title VI Coordinator dina.i.quezada@dot.ri.gov.

RIDOT lleva a cabo sus programas, servicios y actividades en conformidad con las leyes federales contra la discriminación. Si tiene preguntas o dudas contacte a RIDOT oficina de derechos civiles/Title VI, dina.i.quezada@dot.ri.gov.

Esta hoja informativa está disponible en español en internet <http://www.dot.ri.gov/rhodeworks>.

