

Quarterly Report

October – December 2018



January 30, 2019



The RhodeWorks plan to repair roads and bridges was approved by the Rhode Island General Assembly and signed into law by Governor Gina M. Raimondo on February 11, 2016. The legislation (2016-H 7409Aaa, 2016- S 2246Aaa) creates a funding source that will allow the Rhode Island Department of Transportation (RIDOT) to repair more than 150 structurally deficient bridges and make repairs to another 500 bridges to prevent them from becoming deficient, bringing 90 percent of the State's bridges into structural sufficiency by 2025. Incorporated into the new legislation are the following reporting requirements:

RIGL 42-13.1-16. Reporting. – The department shall submit to the office of management and budget, the house fiscal advisor, and the senate fiscal advisor, a report on the progress of implementation of this chapter within thirty (30) days of the close of each of the fiscal quarters of each year. The reports shall also be posted on the department's website. The reports shall include, at a minimum:

- (1) Construction and design contracts of five hundred thousand dollars (\$500,000) or greater planned to be advertised in the upcoming federal fiscal year, their value and expected award date;
- (2) Construction and design contracts of five hundred thousand dollars (\$500,000) or greater awarded in the prior federal fiscal year, date of award, value, and expected substantial completion date;
- (3) Expected final cost of:
 - (i) Any construction contracts of five hundred thousand dollars (\$500,000) or greater that reached substantial completion in the prior federal fiscal year; and
 - (ii) Any design contracts of five hundred thousand dollars (\$500,000) or greater completed in the prior federal fiscal year; and
- (4) Total number of workers employed through the contract and the number of the workers in that total with a Rhode Island address.



Department of Transportation
Two Capitol Hill
Providence, RI 02903

Office 401-222-2450
Fax 401-222-3905

Dear Ms. Reynolds-Ferland, Messrs. Whitney and Womer:

RIDOT is pleased to submit the FFY 2019 Q1 RhodeWorks quarterly report.

Signs of progress related to the implementation of the RhodeWorks program can be seen all around the State. Since program introduction, RIDOT has made progressive improvements to the agency's project delivery methodologies and the positive results are clear. Most notably, the department has been completing a significant volume of bridge repair and replacement projects ahead of schedule and is confident that it will meet and exceed federal bridge condition targets by 2025.

While the State's transportation infrastructure continues to be improved at a record pace, there is a constant stream of work to be done. This work is not just the repair and replacement of Rhode Island's roads and bridges – this report highlights additional department priorities in areas including mass transit, emerging technology, and traveler safety.

To stay on track, RIDOT must maintain and continue execution of the RhodeWorks ten-year plan. The plan is based on strategic and efficient asset management, driven by state-of-the art infrastructure-preservation practices that achieve and maintain assets in a state of good repair.

This report highlights some of RIDOT's accomplishments during the quarter. Detailed project budgets and schedules follow in Insert A.

As always, if you have any questions, do not hesitate to ask.

Sincerely,

Peter Alviti Jr., P.E.
Director

Key Accomplishments

Key Accomplishments	8
---------------------------	---

Statutory Requirements

Statutory Requirements	10
------------------------------	----

Operations

Bridge Condition	19
------------------------	----

Transit Operations	20
--------------------------	----

Safety	21
--------------	----

Maintenance and Operations	23
----------------------------------	----

Projects

Project Performance	25
---------------------------	----

Special Projects	26
------------------------	----

Resolving Legacy Issues.....	30
------------------------------	----

Financials

Expenditures	33
--------------------	----

Construction Contract Awards.....	36
-----------------------------------	----

Appendices

Glossary.....	37
---------------	----

Insert A: Project Budgets and Schedules	A-1
------------------------------------------------------	------------

Key Accomplishments

Key Accomplishments

RhodeWorks Implementation

- **Bridge Toll Facilities** – Federal Highway Administration issued a finding of “No Significant Impact” on the Environmental Assessment (EA) for the remaining toll locations. With the EA process complete, RIDOT will commence with design and construction at the final ten locations.
- **Bridge Conditions** – The department has been completing significant volume of bridge repair and replacement projects ahead of schedule, elevating bridge conditions above original projections. As intended by the RhodeWorks legislation, RIDOT is confident that it will meet and exceed federal bridge condition targets by 2025.

Project Management

- **Pell Bridge Ramp Realignment** – In December, RIDOT was awarded a \$20 million grant through the Better Utilizing Investments to Leverage Development (BUILD) program for the realignment of ramps entering and leaving the Pell Bridge in Newport.

Autonomous Vehicles

- **TRIP Mobility Challenge** – In November, RIDOT’s Transportation Innovation Partnership (TRIP) Mobility Challenge RFP was awarded to May Mobility of Ann Arbor Michigan. Planning for the project is underway and vehicle testing will begin during winter 2019.

Safety

- **Roadway Fatalities** – In 2018, Rhode Island experienced 24 fewer roadway fatalities than in 2017, a 28.6 percent reduction. The department attributes this reduction to the collaboration between numerous stakeholders, as well as the implementation of Rhode Island’s hands-free statute.

Transit Improvements

- **Providence-Newport Ferry Service** – The 2018 ferry season, which ended on October 8th, marked the third successful year for the Providence to Newport Ferry totaling 43,100 trips, which is approximately the same as in 2017. Based on surveys, passengers spent approximately \$1.8 million in Newport this season, representing a 40 percent increase over 2017.
- **Pawtucket/Central Falls Train Station** – During this quarter, RIDOT awarded the Design/Build (DB) contract for the Pawtucket/Central Falls Train Station. A ceremonial groundbreaking was held on November 2nd.

Statutory Requirements

CONSTRUCTION
FFY18 COMPLETE

STATUTORY REQUIREMENT: Expected final cost of Construction Contracts \$500,000 or greater that reached substantial completion in the prior fiscal year, and the total number of workers employed through the contract and the number of workers in that total with a Rhode Island address.

CONSTRUCTION CONTRACTS AT SUBSTANTIAL COMPLETION IN FFY 2017 (Oct. 1, 2017 - September 30, 2018)

Construction Contract (Project Name)	Completion Date (Mon-Year)	Expected Final Contract Cost	Number of Workers	Number of RI Workers	% Share with RI Residence
FFY 2018 1st Quarter - October 1, 2017 - December 31, 2017					
2017 Crack Sealing South and Central Regions	Oct-17	\$ 1.0	2	2	100%
Replacement of Pawtucket Avenue Bridge No. 471	Oct-17	\$ 11.7	36	14	39%
Apponaug By-Pass -Transportation Improvements	Oct-17	\$ 71.0	122	48	39%
2016-2017 Statewide Pavement Striping - Central	Oct-17	\$ 3.0	N/A	N/A	N/A
Statewide LED Retrofit Project	Oct-17	\$ 4.8	N/A	N/A	N/A
2016-2017 Statewide Pavement Striping - South	Oct-17	\$ 2.8	19	6	32%
Pedestrian and Intersection Safety Improvements with Albion Beacon - STC	Oct-17	\$ 2.4	18	14	78%
2016-2017 Pavement Markings - Limited Access Statewide	Oct-17	\$ 3.8	1	1	100%
Capron Bridge No. 792 (70A)	Nov-17	\$ 4.3	58	32	55%
2017 Paver Placed Elastomeric Surface Treatment Statewide	Nov-17	\$ 1.7	N/A	N/A	N/A
Statewide Resurfacing - 2017	Nov-17	\$ 3.5	N/A	N/A	N/A
1R Improvements to Smith Street	Nov-17	\$ 4.5	89	70	79%
Route 146 Improvements	Nov-17	\$ 7.9	43	29	67%
Pleasant Valley Parkway Bridge No. 777	Nov-17	\$ 9.1	27	13	48%
Providence Area Bridges Nos. 1080, 1082 (56B)	Nov-17	\$ 3.4	17	11	65%
ADA Improvements to South/North Main Streets	Nov-17	\$ 9.6	37	28	76%
I-95 Resurfacing - Elmwood Avenue to Eddy Street	Nov-17	\$ 5.3	16	12	75%
Central Street Bridge No. 449 (70B)	Nov-17	\$ 7.7	42	26	62%
Improvements to Snell Road, Little Compton	Dec-17	\$ 1.6	42	35	83%
Mussey Brook Bridge No. 380	Dec-17	\$ 2.8	77	55	71%
Providence - Downtown Improvements, C-3	Dec-17	\$ 4.0	25	20	80%
Subtotal		\$ 165.9			
FFY 2018 2nd Quarter - January 1, 2018 - March 31, 2018					
Subtotal		\$ -			
FFY 2018 3rd Quarter - April 1, 2018 - June 30, 2018					
Pawtucket Area Bridges (53B)	May-18	\$ 8.9	53	31	58%
Airport Connector and Route 2 Bridge Preservation	May-18	\$ 8.2	56	39	70%
Improvements to Rt 44 and Rt 100 Intersection and Chepachet River Bridge Repair	May-18	\$ 3.9	46	32	70%
Route 4 Improvements, C-2	May-18	\$ 5.5	26	20	77%
Coventry - Local Safety Improvements	May-18	\$ 0.5	N/A	N/A	N/A
Tefft Hill Trail Bridge No. 592	Jun-18	\$ 6.6	107	58	54%
2017 Rubberized Asphalt Chip Sealing	Jun-18	\$ 2.4	13	9	69%
Traffic Signal Optimization 2016 Contract 3	Jun-18	\$ 2.3	54	35	65%
Subtotal		\$ 38.3			
FFY 2018 4th Quarter - July 1, 2018 - September 30, 2018					
Roadway Departure Mitigation - Guardrail and Median Imprvmnts - Rt 95 and Rt 146	Jul-18	\$ 2.6	32	19	59%
1R Improvements to Winsor Avenue - Johnston & Scituate	Jul-18	\$ 1.6	102	71	70%
2017-2018 Statewide Pavement Striping - East Bay	Aug-18	\$ 2.5	38	31	82%
Statewide Road Diet 2017	Aug-18	\$ 1.1	28	21	75%
2018 Crack Sealing South and Central Regions	Aug-18	\$ 1.0	31	0	0%
Route 102 at Route 117 Coventry Roundabout (HRRR)	Aug-18	\$ 4.3	100	64	64%
2018 Crack Sealing North and East Regions	Sep-18	\$ 1.0	8	8	100%
Two Mile Corner Reconstruction	Sep-18	\$ 13.7	85	55	65%
Woodville Road Improvements, Hopkington & Richmond	Sep-18	\$ 4.9	98	65	66%
Intersection Safety Improvements to Route 108 at Curtis Corner Road - HSIP	Sep-18	\$ 1.5	62	40	65%
I-95 Resurfacing Contract 2, Pawtucket	Sep-18	\$ 5.0	59	41	69%
Old Sakonnet River Bridge Demolition	Sep-18	\$ 15.0	71	30	42%
Improvements to US Route 1, South Kingstown	Sep-18	\$ 7.1	131	79	60%
Subtotal		\$ 61.4			
TOTAL		\$ 265.6			

RIDOT is increasing efforts to ensure contractor compliance with Rhode Island Jobs reporting requirements.

Data sources: Monthly RIDOT Executive Summary Reports submitted by Turino, and PRISM Database, and current contract amounts as of 1/10/19

Note: RIDOT Continues to monitor costs post-substantial completion -- the construction value will be adjusted to reflect construction expenses related to punch lists and final close-out activities.

STATUTORY REQUIREMENT: Construction Contracts \$500,000 or greater awarded in the prior fiscal year, date of awards, value, and expected substantial completion date.

CONSTRUCTION CONTRACTS AWARDED IN FFY 2018 (Oct. 1, 2017 - September 30, 2018)

Construction Contract (Project Name)	Award Date (Mon-Year)	Value (\$M)	Exp. Completion Date (Mon-Year)
FFY 2018 1st Quarter - October 1, 2017 - December 31, 2017			
I-95 Resurfacing Contract 2	Oct-17	\$ 3.0	Sep-18
I-95 Resurfacing (Route 2 to Service Avenue)	Oct-17	\$ 7.0	Oct-18
Replacement of Victory Highway Bridge No. 589	Oct-17	\$ 12.3	Sep-21
Woodville Road Improvements	Oct-17	\$ 3.1	Sep-18
Hope Valley Bridges (69D)	Oct-17	\$ 2.1	Sep-19
Design/Build - Superstructure Replacement of Cumberland Area Bridges	Nov-17	\$ 15.9	May-20
Cranston - Local Safety Improvements	Nov-17	\$ 0.5	Nov-18
Safety Corridor Improvements - Statewide Road Diet 2017	Nov-17	\$ 0.6	Aug-18
Replacement of Pine Street Bridge	Nov-17	\$ 6.8	Nov-18
Improvements to Route 6 (Hartford Avenue) Contract 1	Nov-17	\$ 5.9	May-19
Route 146 Corridor Bridges	Nov-17	\$ 6.8	Dec-19
Pavement Preservation to Route 1A	Dec-17	\$ 3.1	Dec-18
Safety Improvements - Johnston, Newport, Warwick Int.	Dec-17	\$ 1.1	Nov-18
Rehabilitation of Simmonsville Bridge	Dec-17	\$ 1.5	May-19
1R Improvements to Winsor Avenue	Dec-17	\$ 1.1	Jul-18
Intersection Safety Improvements to Route 108	Dec-17	\$ 0.7	Sep-18
I-195 Corridor Bridges	Dec-17	\$ 12.4	Jun-19
Subtotal		\$ 84.0	
FFY 2018 2nd Quarter - January 1, 2018 - March 31, 2018			
Design/Build - Wood River Valley Bridge No. 404	Jan-18	\$ 12.1	Aug-20
Improvements to Diamond Hill Road	Jan-18	\$ 1.5	Nov-19
Central RI Bridges	Jan-18	\$ 5.8	Jul-20
US Route 1 (South Kingstown)	Jan-18	\$ 5.3	Aug-18
Replacement of Railroad Avenue Bridge	Jan-18	\$ 1.7	Nov-18
Design/Build - Superstructure Replacement of Bakers Pine Bridge	Jan-18	\$ 7.0	Oct-20
Roadway Departure Mitigation	Feb-18	\$ 1.6	Jul-18
Big River Bridge No. 34	Feb-18	\$ 2.3	Jan-21
Design/Build - Oxford Street Bridge	Feb-18	\$ 8.5	Jun-20
Rubberized Asphalt Chip Seal	Feb-18	\$ 1.4	Jun-19
Horton Farm Bridge	Feb-18	\$ 13.2	Nov-19
Aquidneck Avenue Improvements	Feb-18	\$ 1.7	Dec-19
Paver Placed Elastomeric Surface Treatment	Feb-18	\$ 1.2	Oct-18
2018 Crack Sealing South & Central Regions	Mar-18	\$ 0.7	Aug-18
Design/Build - I-295 Bridges Contract 1	Mar-18	\$ 17.0	May-21
Design/Build - I-295 Bridges Contract 2	Mar-18	\$ 34.5	May-21
Design/Build - I-95 North & South Bridges at Toll Gate Road	Mar-18	\$ 19.2	Dec-19
Design/Build - I-95 Corridor Bridges	Mar-18	\$ 15.4	Apr-21
2018 Crack Sealing North & East Regions	Mar-18	\$ 0.7	Sep-18
Route 146 Guide Sign Improvements - North	Mar-18	\$ 1.5	Nov-19
Centerville Road Bridge	Mar-18	\$ 3.8	Apr-20
Subtotal		\$ 156.2	
FFY 2018 3rd Quarter - April 1, 2018 - June 30, 2018			
I-195 Relocation, Waterfront Parks	Apr-18	\$ 6.1	Aug-19
1R Improvements to Reservoir Avenue	Apr-18	\$ 4.0	Dec-18
Intersection Safety Improvements Statewide	May-18	\$ 2.1	Jul-19
Intersection Safety Improvements to Allens Avenue	May-18	\$ 0.7	Aug-19
Trestle Trail - West Section Bridges	Jun-18	\$ 3.8	Mar-20
Improvements to Railroad Street	Jun-18	\$ 2.3	Nov-18
1R Improvements to Rockland Road	Jun-18	\$ 1.4	Nov-18
Resurfacing of Route 6A Contract 2	Jun-18	\$ 1.2	Oct-18
Safe Routes to School Contract 1	Jun-18	\$ 1.0	Dec-18
Intersection Safety Improvements to Route 114	Jun-18	\$ 7.3	Oct-20
Subtotal		\$ 30.0	
FFY 2018 4th Quarter - July 1, 2018 - September 30, 2018			
Blackstone River Bikeway 8B1 - Woonsocket	Jul-18	\$ 2.5	Oct-19
Rubberized Asphalt Chip Sealing	Jul-18	\$ 1.5	Jun-19
Crack Sealing - Limited Access	Jul-18	\$ 0.4	Oct-18
Paver Placed Elastomeric Surface Treatment	Aug-18	\$ 2.0	Dec-18
Improvements to Geneva Pond Bridge	Aug-18	\$ 2.4	May-20
Louisquisset Pike Ramp Bridge	Aug-18	\$ 4.0	Nov-20
Design/Build - Woonasquatucket River Bridge	Aug-18	\$ 6.7	Jun-21
2018 High Friction Surface Treatment	Aug-18	\$ 0.8	Dec-19
Improvements to Nayatt Road	Sep-18	\$ 2.7	Aug-19
STC Pedestrian & Intersection Improvements	Sep-18	\$ 1.5	Nov-19
Replacement of Barbs Hill Road Bridge	Sep-18	\$ 1.5	Jun-20
Subtotal		\$ 26.0	
TOTAL		\$ 296.2	

Note: Value = the total construction value.

CONSTRUCTION

FFY20 PLANNED ADVERTISED

STATUTORY REQUIREMENT: Construction Contracts \$500,000 or greater planned to be advertised in the upcoming federal fiscal year, their value, and expected award date.

CONSTRUCTION CONTRACTS PLANNED TO BE ADVERTISED IN FFY 2019 (Oct. 1, 2019 - September 30, 2020)

Construction Contract (Project Name)	Expected Advertise Date	Construction Value (\$M)
FFY 2020 - October 1, 2019 - September 30, 2020		
Bridge Group 75T-5 I-95 Viaduct NB	FFY 20	\$ 143.0
2020 Intersection Safety Improvemtns	FFY 20	\$ 1.5
2020 Pedestrian Improvements to Memorial Blvd	FFY 20	\$ 2.4
2020 Roadway Departure Mitigation	FFY 20	\$ 5.0
Arterial Traffic Signal Improvements Allens Ave	FFY 20	\$ 1.9
Barton St and Broad	FFY 20	\$ 10.5
Blackstone River Bikeway 8A	FFY 20	\$ 3.5
Bridge Group 10 - I-295 SMI	FFY 20	\$ 9.3
Bridge Group 13C Great Road Culvert	FFY 20	\$ 2.0
Bridge Group 18A EGR, NAR, NKS	FFY 20	\$ 11.0
Bridge Group 20A - Dean Street Bridge	FFY 20	\$ 10.0
Bridge Group 32, I-95 Cranston	FFY 20	\$ 15.1
Bridge Group 35 - I-295 LIN, SMI	FFY 20	\$ 16.0
Bridge Group 39 LIN, NPR	FFY 20	\$ 9.9
Bridge Group 40A - Hawkins Bridge	FFY 20	\$ 3.0
Bridge Group 43A - Mohegan Bridge	FFY 20	\$ 4.9
Bridge Group 54B - Rte 138, Kingston Station RR Bridge	FFY 20	\$ 8.4
Bridge Group 57J Browning Mill Bridge and Culverts	FFY 20	\$ 1.5
Bridge Group 59C - Reservoir Ave RR Bridge	FFY 20	\$ 9.0
Hunts Mill Bridge	FFY 20	\$ 3.0
Intersection Safety Imprv to RT 6 Scituate/Johnston	FFY 20	\$ 3.0
Pell Bridge Ramps Phase II	FFY 20	\$ 30.2
Reconstruction of Rt. 5 Contract 1	FFY 20	\$ 5.3
RI-146 Area Bridges- Contract 2	FFY 20	\$ 4.2
Rt 138 and Rt 112 Roundabout	FFY 20	\$ 1.3
Sin & Flesh Brook Bridge at Old Main Rd	FFY 20	\$ 0.4
TOTAL		\$ 315.2

Construction values subject to change based on refined design estimates.

STATUTORY REQUIREMENT: Expected final cost of Design Contracts \$500,000 or greater that reached substantial completion in the prior fiscal year, and the total number of workers employed through the contract and the number of workers in that total with a Rhode Island address.

DESIGN CONTRACTS COMPLETED IN FFY 2018 (Oct. 1, 2017 - September 30, 2018)

Design Contract (Project Name)	Completion Date (Mon-Year)	Expected Final Contract Cost	Number of Workers	Number of RI Workers	% Share with RI Residence
FFY 2018 1st Quarter - October 1, 2017 - December 31, 2017					
Improvements to I-95/Route 4/Route 2 Interchanges	Sept-17	\$ 1.09	N/A	N/A	N/A
PE & Environmental Review for the PVD Train Station High Speed Rail Improv. Project	Oct-17	\$ 3.07	N/A	N/A	N/A
Statewide Traffic Engineering Studies for The State Traffic Commission	Dec-17	\$ 1.16	N/A	N/A	N/A
On-Call Transit Planning Consultant Services	Dec-17	\$ 0.60	N/A	N/A	N/A
Subtotal		\$ 5.93			
FFY 2018 2nd Quarter - January 1, 2018 - March 31, 2018					
Subtotal		\$ -			
FFY 2018 3rd Quarter - April 1, 2018 - June 30, 2018					
Subtotal		\$ -			
FFY 2017 4th Quarter - July 1, 2018 - September 30, 2018					
Waterfront Drive	Jul-17	\$ 2.28	N/A	N/A	N/A
I-95 Safety Improvements to Riding Surface & Ramps	Aug-17	\$ 1.84	N/A	N/A	N/A
On-Call Transportation Eng. Services - Bridge/ Simple C-1	Aug-17	\$ 1.48	N/A	N/A	N/A
On-Call Transportation Eng. Services - Bridge/ Routine C-3	Sep-17	\$ 1.32	N/A	N/A	N/A
Reconstruction of East Main Rd (Route 138), C-2	Sep-17	\$ 0.76	N/A	N/A	N/A
Statewide High Hazard Intersections/Ramps- C1 / Bristol County	Sep-17	\$ 1.86	N/A	N/A	N/A
Planning of The Intermodal Providence Station Transit Center	Sep-17	\$ 0.82	N/A	N/A	N/A
Subtotal		\$ 10.36			
TOTAL		\$ 16.29			

Note: RIDOT does not currently collect full employment and payroll information from contractors and subcontractors on design contracts as this was not a legislated requirement prior to RhodeWorks. As such, RIDOT does not currently have sufficient information about the number of unique employees per project or employee state of residence. RIDOT is developing a methodology to capture this information in the future.

Data sources: RIDOT Financial Management System

DESIGN

FFY18 AWARDS

STATUTORY REQUIREMENT: Expected final cost of Design Contracts \$500,000 or greater awarded in the prior fiscal year, date of awards, value, and expected substantial completion date.

DESIGN CONTRACTS AWARDED IN FFY 2018 (Oct. 1, 2017 - September 30, 2018)

Design Contract (Project Name)	Award Date (Mon-Year)	Value (\$M)	Exp. Completion Date (Mon-Year)
FFY 2018 1st Quarter - October 1, 2017 - December 31, 2017			
Design/Build Services for the Reconstruction of the 6/10 Interchange	Dec-17	\$ 247.6	Dec-29
Subtotal		\$ 247.6	
FFY 2018 2nd Quarter - January 1, 2018 - March 31, 2018			
On-Call STC Design Consultant Services C-1	Jan-18	\$ 0.5	Jan-21
On-Call STC Design Consultant Services C-2	Jan-18	\$ 0.5	Jan-21
Subtotal		\$ 1.0	
FFY 2018 3rd Quarter - April 1, 2018 - June 30, 2018			
Subtotal		\$ -	
FFY 2018 4th Quarter - July 1, 2018 - September 30, 2018			
Stormwater Asset Maintenance Agency Price Agreement 1	Sep-18	\$ 2.6	Aug-24
Stormwater Asset Maintenance Agency Price Agreement 2	Sep-18	\$ 2.6	Aug-24
Stormwater Asset Maintenance Agency Price Agreement 3	Sep-18	\$ 2.6	Aug-24
On-Call Highway Safety Improvement Program (HSIP) Eng. Support Consult Serv.	Sep-18	\$ 1.3	Aug-21
Subtotal		\$ 9.0	
TOTAL		\$ 257.6	

DESIGN

FFY20 PLANNED

STATUTORY REQUIREMENT: Design Contracts \$500,000 or greater planned to be advertised in the upcoming federal fiscal year, their value and expected award date.

DESIGN CONTRACTS PLANNED TO BE ADVERTISED IN FFY 2020 (Oct. 1, 2019 - September 30, 2020)

Design Contract (Project Name)	Award Date (Mon-Year)	Value (\$M)	Exp. Completion Date (Mon-Year)
--------------------------------	--------------------------	-------------	------------------------------------

FFY 2020 - October 1, 2019 - September 30, 2020

*	*	\$	-	*
---	---	----	---	---

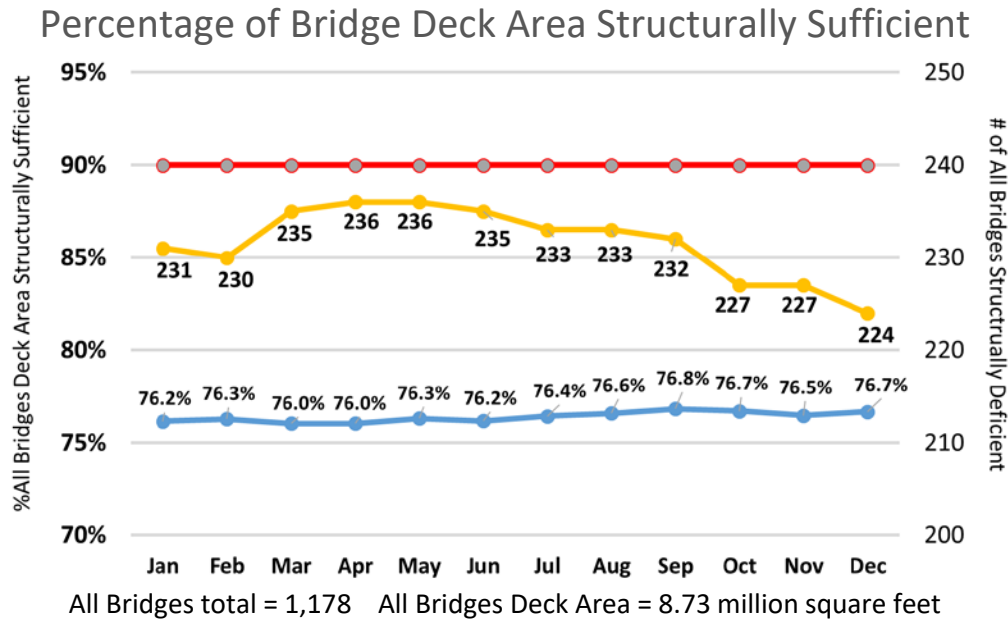
Note: At this time, the planning of FFY 2020 Design contracts is in process. Anticipated contract advertisements will be identified in upcoming quarterly reports upon finalization.

Operations

Bridge Condition

In 2017, the condition of Rhode Island's bridges ranked 51th out of the 51 states (including District of Columbia) – the worst in America. Though the department is not satisfied with the condition of Rhode Island bridges, in 2017 we experienced the largest bridge sufficiency percentage increase of any state*. The following chart details bridge sufficiency through the first quarter of FFY 2019. RIDOT anticipates reaching the federal minimum standard of 90 percent sufficiency by 2025.

*Note: Final nationwide 2018 data not yet available.



RIDOT's Ten Year Plan calls for increased expenditures on bridge preservation activities in addition to expenditures on bridge reconstruction. As can be seen in the chart below, fourteen bridges were removed from the structurally deficient list during this past quarter; during the same period, six bridges were deemed structurally deficient upon inspection.

Bridges No Longer Structurally Deficient (Repaired, Replaced, or Removed) Q1 FFY 2019

Q1 Oct-Dec 2018	The Beattie Bridge 028301 which passes over Beattie Brook in Tiverton	195 sq ft
	The Railroad Ave Bridge 035401 which passes over Pascoag River in Burrillville	958 sq ft
	The Simmonsville Bridge 032601 which passes over Simmons Brook in Johnston	1,391 sq ft
	The Bleachery Bridge 000401 which passes over Bleachery Brook in East Greenwich	1,478 sq ft
	The Wyoming Bridge 004501 which passes over Wood River in Richmond	2,600 sq ft
	The Harbor Junction Bridge 013101 which passes over Harbor Junction and P&W Rail Road in Providence	4,411 sq ft
	The Parkway Ramp Bridge 046601 which passes over I-195 EB & WB in East Providence	5,306 sq ft
	The Potter Hill Road Bridge 085301 which passes over High Street in Westerly	5,769 sq ft
	The Airport Bridge 077301 which passes over US 1 - Post Road in Warwick	5,931 sq ft
	The Potter Street Bridge 046701 which passes over I-195 EB & WB in East Providence	7,565 sq ft
	The Purchase Street Bridge 046801 which passes over I-195 EB & WB in East Providence	7,843 sq ft
	The Lyon Ave Bridge 046901 which passes over I-195 EB & WB in East Providence	7,900 sq ft
	The Woonsocket Hill Road Bridge 044201 which passes over RI 146 N Smithfield in North Smithfield	8,472 sq ft
	The Water Works Bridge 085001 which passes over Pawcatuck River in Westerly	12,200 sq ft
Subtotal		72,019 sq ft

Bridges Added to The Structurally Deficient List in Q1 FFY 2019

Q1 Oct-Dec 2018	The Bridgetown Bridge 034401 which passes over Pettaquamscutt River in Narragansett	2,376 sq ft
	The Old Hopkinton Road Bridge 085501 which passes over Old Hopkinton Road in Westerly	6,606 sq ft
	The Hartford Ave West Bridge 060801 which passes over US 6 in Johnston	10,248 sq ft
	The West Natick Road SB Bridge 072521 which passes over W Natic Rd in West Warwick	14,440 sq ft
	The West Natick Road NB Bridge 072501 which passes over W Natic Rd in West Warwick	14,448 sq ft
	The Diamond Hill Road Bridge 075401 which passes over I-295 NB & SB in Cumberland	16,839 sq ft
Subtotal		64,957 sq ft
Net Change		7,062 sq ft

Note: The chart to the left, while generated from bridge software, is meant to solely be a list of bridges and is only one piece of the information used to generate the "Percentage of Bridge Deck Area Structurally Sufficient" chart.

The Transit Operations Program consists of the various operational activities necessary for ongoing commuter rail and the seasonal ferry service. RIDOT operating expenses include Amtrak's Northeast Corridor access fee, liability insurance, Massachusetts Bay Transportation Authority (MBTA) operations, station operations and marketing. Commuter rail operating expenses are funded with federal Congestion Mitigation and Air Quality (CMAQ) funds. Currently MBTA operations are funded with Federal Transit Administration (FTA) State of Good Repair funds for capital improvements along the MBTA's Providence line in exchange for service.

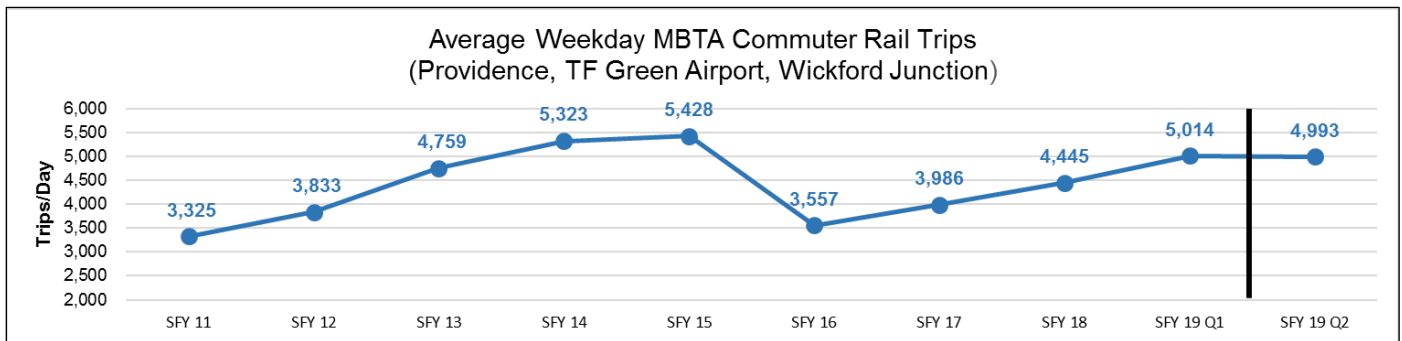
Over 3,600 Rhode Islanders used MBTA Commuter Rail to attend the October 31st Red Sox World Series championship parade in Boston. On this morning, over 1,400 passengers at Providence, TF Green, and Wickford Junction stations completely filled inbound MBTA train 808.



The 2018 Ferry season ended on October 8, 2018. The total ridership of 43,100 passengers was similar to 2017. Passengers spent approximately \$1.8 million in Newport this season, representing a 40 percent increase over 2017.

Commuter rail ridership was steady compared with the previous quarter, while use of the Wickford Junction parking garage increased 46 percent, primarily due to use by URI students and faculty.

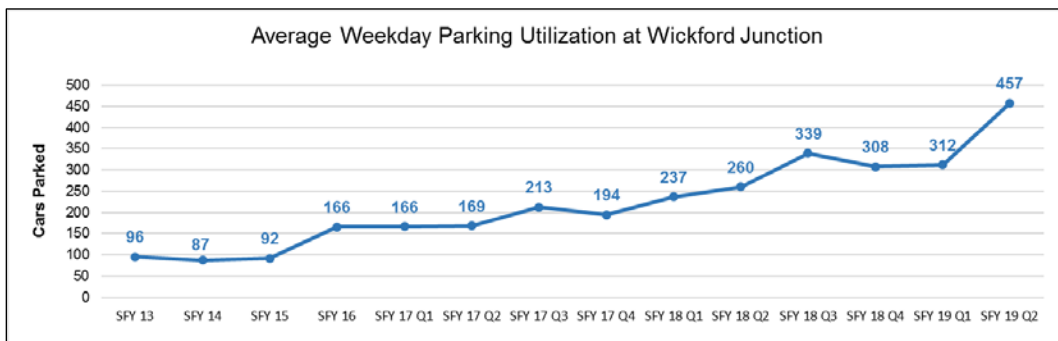
Commuter Rail Ridership



Definition: Quarterly weekday ridership counts and estimates of MBTA trips at the Providence, T.F. Green Airport, and Wickford Junction commuter rail stations (counts include both boardings and alightings)

Sources: MBTA Blue Book, MBTA operator estimates, RIDOT quarterly counts

Parking Garage Utilization



Definition: Average daily (weekday only) counts of the number of cars parked at the Wickford Junction parking garage

Sources: Wickford Junction operator transactions (historical data) & RIDOT counts

Safety

During this quarter, RIDOT joined AAA and the RI Legal Foundation (RILF) partnership in support of a youth safety program entitled “Rhode Island Teen Driver Safety Summit”, aimed at igniting young driver interest with RIDOT, AAA, and RILF. This program engages high schoolers through a mock trial competition which highlights a distracted driving crash, which includes presentations from law enforcement and legal professionals on how evidence is collected and used to prosecute such cases.

In November, RIDOT began its “Ripple Effect Part 3” media strategy. The intention of this campaign is to create a **call to action**. Each component of the Ripple Effect initiative has been re-tagged with a definitive action line which is being presented in television, radio, and cinema advertisements across the state. As part of this initiative, the department also created a holiday “safety messages” radio campaign with Director Alviti.

The department continues to utilize statewide safety message boards which run unique, eye-catching messages throughout the year. RIDOT has strategically layered media programs with the support of high visibility enforcement campaigns and public awareness efforts.

By the end of 2018, RIDOT was tracking 24 fewer traffic fatalities than FFY 2017. The department attributes this to the collaboration between numerous stakeholders, including RIDOT’s education and media support team as well as our law enforcement partners across the state. Additionally, RIDOT believes that the successful implementation of Rhode Island’s hands-free statute contributed to reducing accidents saving lives.



Improvements have been the result of a team effort, internally and externally and the Office of Highway Safety is proud to help lead the way. RIDOT will continue to expand media, public awareness and education, and law enforcement efforts based on the general public’s engagement and increased activism in FFY 2019.

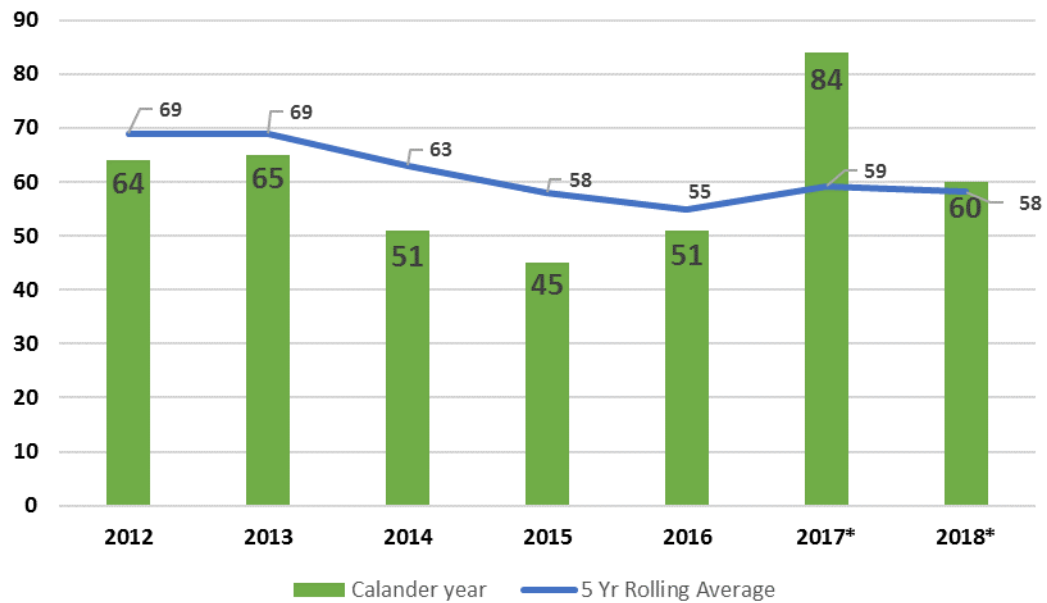
FARS FATALITIES BY PERSON TYPE 2011-2018

PERSON TYPE	2011	2012	2013	2014	2015	2016	2017 (prelim.)	2018 (prelim.)
Motor Vehicle Occupants	37	49	37	25	28	31	50	31
Motorcyclists	15	8	11	10	9	4	11	18
Pedestrians	14	5	14	14	8	14	21	7
Bicyclists	0	2	3	0	0	2	2	1
ATV	0	0	0	1	0	0	0	2
Person on Personal Conveyance	0	0	0	1	0	0	0	1
Unknown Person Type	0	0	0	0	0	0	0	0
TOTAL	66	64	65	51	45	51	84	60

as of December 31, 2018

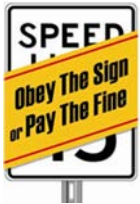
Per federal rule, fatality data remains in preliminary status for 12 months following the close of calendar year.

Traffic Fatalities by Year

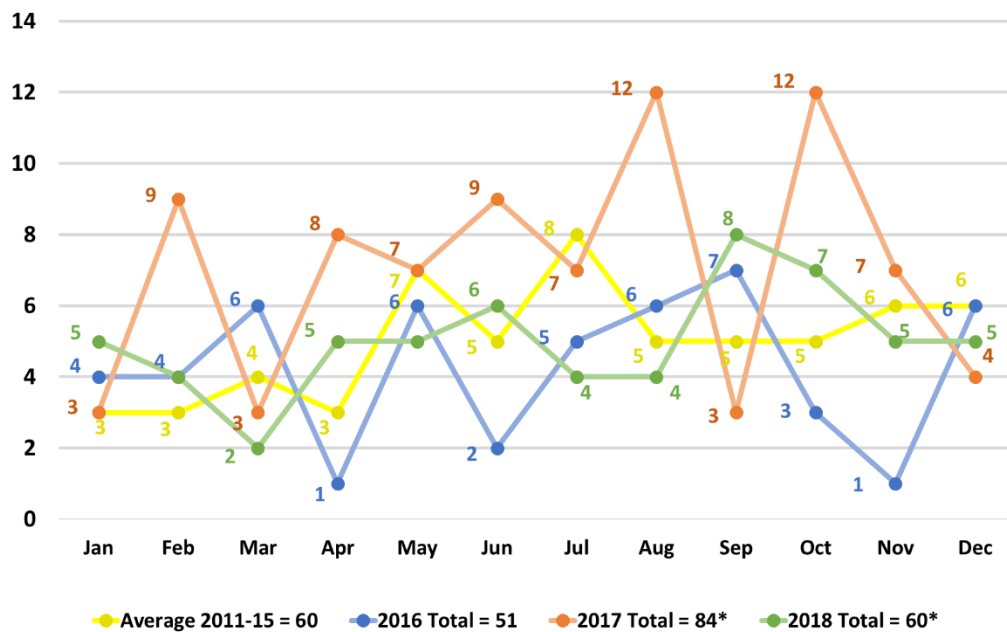


*Per federal rule, fatality data remains in preliminary status for 12 months following the close of calendar year.

FARS data showed a nationwide increase in 2016: www.crashstats.nhtsa.dot.gov/Api/Public/ViewPublication/812332



Traffic Fatalities by Month



*Per federal rule, fatality data remains in preliminary status for 12 months following the close of calendar year.

Maintenance and Operations

The RIDOT Maintenance Division district facilities and specialized crews continued their daily operations of road patching, drainage structure cleaning and repairs, road sweeping, pavement marking striping, grass mowing, tree trimming and removal, litter cleanup, sign installations and repairs, traffic signal maintenance, and bridge maintenance (joint repairs, bridge washing, vegetation removal, etc.) along the State roadways. During the first quarter of FFY 2019, RIDOT swept 391 curb miles of roadway, mowed 636 miles of grass (mower passes), repaired 69 drainage structures, cleaned 1,719 drainage structures, installed 934 signs (this includes replacement signs and new signs requested), and performed various types of striping including white edge line, yellow center line, stop bars, yield markings, crosswalks, and parking spaces.

The RIDOT Maintenance Division continues to upgrade its Facilities' aging equipment and to add equipment as the maintenance workforce expands. Using new equipment improves the division's efficiency and allows for the State highway and bridge infrastructure to be maintained in better condition. During the first quarter of FFY 2019, RIDOT received six heavy-duty pickup trucks, seven boom mower tractors, seven catch basin cleaning trucks, ten mason dump trucks, and seven truck-mounted attenuators.

RIDOT continues to work with the State Office of Energy Resources on energy efficiency upgrades at six of RIDOT's Maintenance Division District Facility buildings. Upgrades will include lighting upgrades to LED, boiler replacements, installing mini-heat pumps, replacing thermostats and zone valves, replacing existing garage heaters, improving building envelope measures (sealing) and air compressor improvements. The objectives of the project are to improve energy efficiencies (reduce operating costs), greenhouse gas reductions, and streamlining inventories & products across the RIDOT Maintenance Division's portfolio of buildings. Bids from interested contractors were received in December and are currently under review. Implementation and upgrade installation will commence later this calendar year.



During this quarter, RIDOT issued 24 Physical Alteration Permits (PAPs) for residential and commercial construction impacting the State Highway Right-of-Way (ROW), and issued 187 Utility Permits for utility construction impacting the State Highway ROW.

To date, there have five storm events in the 2019 Winter Season. RIDOT's salt stockpiles were fully stocked prior to the first snowfall and will be sufficiently stocked throughout the winter. The RIDOT Maintenance Division continues to use the services of the automated pothole patching trucks through the winter months. The automated pothole patching trucks provide more efficient, longer lasting pothole repairs and supports the winter operations.

2019 Winter Operation Summary

Storm Date	Storm Hours	Snowfall (Inches)	Salt (Tons)	Number of RIDOT Heavy Plow Trucks in Fleet	Number of RIDOT Heavy Plow Trucks Snow Ready	Percent (%) RIDOT Heavy Plow Trucks Snow Ready
11/15/2018	16	4.0	6,462	107	81	76%
12/24/2018	4	0.3	2,137	132	125	95%
1/8/2019	7	0.0	1,743	132	125	95%
1/18/2019	7	0.0	984	132	125	95%
1/19/2019	38	3.0	17,130	132	128	97%
Totals	72	7.3	28,456			

Projects

Project Performance

RIDOT is currently tracking 62 capital projects in active construction as of the end of the first quarter of FFY 2019. Projects progress through RIDOT's project delivery process as follows: first, the project is included in the capital plan; then it goes through a design phase, followed by an advertisement for construction; construction and substantial completion.

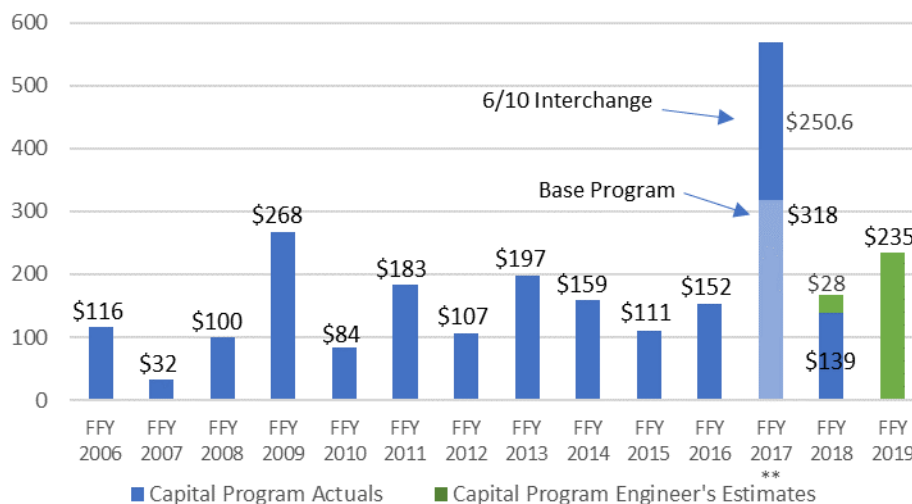
One active construction projects from the FFY 2016 class is currently over-budget and two projects are late. In FFY 2017 two projects in active construction are late.

On-Time and On-Budget Project Performance by Class

	On Budget % (by Value)	On Time % (by Value)	Contract Value of projects in construction	On Budget % (by Projects)	On Time % (by Projects)	# of Projects in Construction
FFY16	67%	36%	\$ 53.4	86%	71%	7
FFY17	100%	90%	\$ 492.6	100%	90%	20
FFY18	100%	100%	\$ 120.6	100%	100%	35

***Note #:** Drivers of sub-par FFY 2016 on-time performance are the high-value Providence River Pedestrian Bridge (delay in receiving steel) and Washington Bridge North (RIDOT chose to delay work on the surface of the bridge by one year to eliminate conflict with other bridge projects in the immediate area and to reduce lengthy ramp closures). Without these delays, "On Time % (by Value)" would be 100 percent.

Capital Program

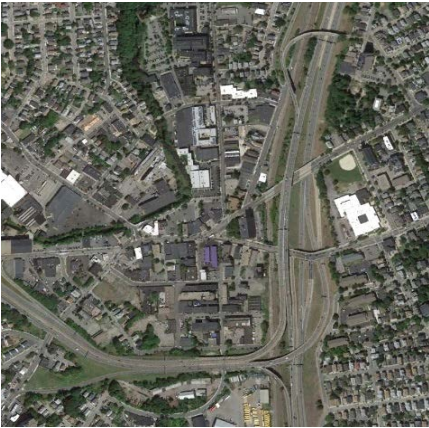


****Note:** FFY 2017 includes actual low bids totaling \$318 million from the Capital Program including \$250.6M from the Route 6/10 Interchange and \$41.8 from Tolling.

FFY18/19 Construction Program Update:

- Route 37 TIGER project has been combined into one project in order to avoid construction delays.
- SRTS Barrington C-1A and SRTS C-3 Smithfield/Westerly/Woonsocket have been removed from FFY 2018 for redesigning and the Maintenance Facility project has been removed due to funding constraints.
- The RT 138A Aquidneck Ave (East Main Rd to Green End Ave) and 2019 PPEST C-2 have been added to FFY 2019.

The Route 6/10 Interchange



This project involves the replacement of nine bridge structures that comprise the 6/10 Interchange. Seven of the nine structures are structurally deficient. The project also involves construction of the “missing move” to allow Route 10 north traffic to access Route 6 West without traveling through Olneyville. In addition to state of good repair efforts, the project will include 1.4 miles of bike paths and make more than four new acres of real estate suitable for development.

Update: During the first quarter of FFY 2019, RIDOT and the 6/10 Constructors Joint Venture continued engineering work and coordination with affected utilities and AMTRAK. Construction of a structural liner in the underground combined sewer that runs through the project was completed. Construction of a temporary bypass

of Route 10 North was completed and opened to traffic in November. Other traffic shifts on Route 10 South and Route 6 were completed which will allow construction of the new interchange to begin. Partial demolition of the Hartford Avenue Bridge, Plainfield Street Bridge, and the Huntington Viaduct began. RIDOT continues to coordinate with the City of Providence on the details of the design.

The Route 95 North Bound Viaduct Project - Providence



Interstate 95 North through the Providence Viaduct is the most congested highway in Rhode Island. This proposed project includes the replacement of the Northbound I-95 Providence Viaduct. Rebuilding the interchange and eliminating weaves would greatly reduce traffic congestion and significantly improve safety. Four of the five bridges in the interchange that will be replaced are structurally deficient. Six additional structures will be rehabilitated, and there will be three new structures built that do not currently exist today. Lastly, modifications to the Dean Street ramps would eliminate a congested weave and free up more than 5 acres of land.

Update: The replacement of the structurally deficient Smith Street Bridge over I-95 along with preservation activities on four other nearby structures previously included in this project have been removed and will be advertised as a separate

standalone project in Spring 2019. Efforts have also continued during the quarter on drafting the Environmental Assessment for this project that is required under Federal National Environmental Policy Act (NEPA) regulations. While final funding options that would allow RIDOT to construct this project continue to be evaluated, RIDOT is anticipating to issue a Request For Qualifications (RFQ) to potential Design-Build teams during the second quarter of FFY 2019.

Special Projects

Providence Intermodal Transit Center



The Providence Station Transit Center Project will locate RIPTA bus hub activities to a new facility adjacent to the Providence Station, in addition to developing a downtown bus operations plan linking proposed transit centers with major employment and activity centers. RIDOT envisions using a Public-Private Partnership (P3) approach to create a larger transit-oriented development project by leveraging private sector involvement.

Update: The Technical Evaluation Committee (TEC) has been formed and consists of members from RIDOT, RIPTA, Commerce, and RIDOA. The TEC has been meeting monthly to evaluate the proposal received.

Quonset Air Show/Trains-to-Planes



In 2016, in an effort to relieve traffic congestion along I-95, Route 4, and within the Quonset roadways, RIDOT initiated free train service to and from the Rhode Island National Guard Air Show. Nearly 3,800 people rode the train in 2016, representing close to 7 percent of all Air Show attendees. On June 9th and 10th, RIDOT held the third annual Trains to Planes free ride event, in coordination with MBTA, Seaview Railroad, the Rhode Island Airport Corporation, and the Quonset Development Corporation. In its third year in 2018, 4,300 people utilized the train service, approximately the same ridership as in 2017. Service to/from Wickford Junction was introduced in 2017.

Update: No activity this quarter. The RI National Guard has cancelled the 2019 Air Show due to the number of soldiers and military personnel anticipated to be deployed in 2019. The Guard anticipates holding the Air Show in 2020. At the appropriate time, RIDOT will reengage MBTA and Amtrak to resume special train service to the show.

Bridge Toll Facilities



A key component of the RhodeWorks infrastructure improvement plan is to assess user fees on tractor trailers to fund the reconstruction of structurally deficient bridges. This will be done by erecting All Electronic Tolling (AET) equipment at these bridge locations. The toll will be set at a level to generate enough revenue to pay for the amount of the bridge reconstruction cost proportionate to the amount of damage tractor trailers have caused.

Update: During the first quarter of FFY 2019, RIDOT continued collecting tolls at the first two locations. Revenue from the first two toll sites has been consistent and on target with projections. Also during this quarter, the Federal Highway Administration issued a finding of “No Significant Impact” on the Environmental Assessment (EA) for the ten remaining toll locations. Now that the EA process is complete, RIDOT will commence with design and construction at the final ten locations.

Pawtucket/Central Falls Train Station



In 2007, the City of Pawtucket completed a feasibility study on the restoration of commuter rail service in Pawtucket, with recommendations on station locations.

Update: During this quarter, RIDOT awarded the Design/Build (DB) contract for the Pawtucket/Central Falls Train Station. On November 2nd a ceremonial groundbreaking event took place. Weekly meetings are being held with the DB team and key project stakeholders.

Providence-Newport Ferry Service



Recognizing the value of Narragansett Bay as both a natural and transportation asset, RIDOT implemented ferry services in 2016 following deliberations of a transit working group which was charged with developing options to increase Rhode Island's transit usage. While exploring many possible designations and landing sites, in an effort to test the market for ferry service, the group recommended a start-up service for the 2016 summer season (July through September) connecting Providence and Newport. RIDOT worked with the Cities of Providence and Newport on landing sites, and closely coordinated its efforts with the Rhode Island

Department of Environmental Management (DEM), the Coastal Resources Management Council (CRMC), and the Rhode Island Public Utilities Commission (DPUC).

Update: Ferry service ended for the 2018 season on October 8, 2018, Columbus Day. The total ridership of 43,100 passengers was similar to 2017. Based on surveys, passengers spent approximately \$1.8 million in Newport this season, representing a 40 percent increase over 2017.

FHWA Ferry Boat Program



RIDOT oversees the Federal Highway Administration's Ferry Boat Program. The program is formula-based and is to be used for the construction of ferry boats and ferry terminal facilities. Funds are made available for eligible projects through the State using the data contained in the Bureau of Transportation Statistics National Census of Ferry Operations database. The State of Rhode Island was awarded \$412,703 to four ferry operators in 2018, including RIDOT's Newport-Providence service. Each operator utilizes a publicly owned terminal facility.

Update: RIDOT reached out to the other three awarded ferry operators to solicit projects for the funding available. Conanicut Marine Services will be adding their 2018 funding to a project to complete ADA improvements to the docking facilities in the Town of Jamestown. The remaining three operators are developing project proposals. Also, the Town of Bristol was awarded a \$1.2 million grant from the Federal Transit Administration (FTA) for the Prudence Island dock. RIDOT will administer this grant directly with the Town. Construction is anticipated in Spring 2019.

Special Projects

At-Grade Railroad Crossing Program



The department oversees the Federal Highway Administration's Highway-Rail Grade Crossing Program. This program addresses and implements safety improvements at highway-railroad grade crossings and aims to reduce the number of incidents/crashes. Eligible crossing work includes, but is not limited to, signings, pavement markings, active warning devices, crossing surface improvements, grade separation and crossing closures.

Update: Grade crossing work continued this quarter at Admiral Kalfus Road, Stringham Road, and Poplar and Elm Streets on Aquidneck Island. These improvements are being undertaken through a force account agreement with Newport and Narragansett Bay Railroad Company. Also grade crossing work is ongoing at Pawtucket Avenue in East Providence. This work is through a force account agreement with Genesee and Wyoming Railroad (formerly Providence and Worcester Railroad).

US Dept. of Justice Enforcement Action against RIDOT for NPDES Permit Violations



In 2011, the US Environmental Protection Agency (EPA) audited RIDOT for compliance with stormwater pollution controls under the Clean Water Act, which in Rhode Island is administered by the Department of Environmental Management (DEM). In May 2014, the US Department of Justice (DOJ) notified RIDOT that the EPA had requested that DOJ bring a federal court action against RIDOT for violations of conditions and limitations of its stormwater permit. The violations focused on lack of actions related to the control of pollutants discharged to impaired water bodies, illicit discharge program development (IDDE) and screening, and good housekeeping measures such

as inspection/cleaning of catch basins and street sweeping. DOJ offered RIDOT the opportunity to discuss a resolution without the need for formal litigation through execution of a consent decree. When the new RIDOT management arrived in February of 2015, it completed negotiations of the consent decree, which became effective in December 2015. In response to the EPA audit, DOJ negotiations, and the consent decree, RIDOT created an Office of Stormwater Management (OSM) and a \$112 million ten-year Stormwater Compliance Implementation Plan.

Update: During the fourth quarter of CY 2018, OSM completed and submitted to EPA the required Stormwater Control Plans for the Aquidneck Island Drinking Water Supply, the Greenwich Bay Coastal and the Greenwich Bay Inland watersheds. OSM also submitted the revised SCP's for the Lower Woonasquatucket River per the partial approval received from EPA on June 29, 2017. On December 20, 2018, RIDOT received partial approval of the 2017 submission. OSM will respond to the comments and has contracted with the design consultants to proceed with final design for the projects approved too date. A new On-Call contract was developed and approved, OSM will be qualifying consultants to prepare future SCP's and to design the required water quality projects in the first quarter of 2019. This contract will also be used to select the consultants for the 3 required SCPs for 2019. OSM prepared a Catch Basin Repair MPA contract and completed the first repair project in December. Future repair contracts will be developed and bid next quarter for Spring 2019 construction. The required General Assembly Report was prepared and delivered on December 12, 2018. The office completed numerous project designs, reviewed all land sale proposals, and performed construction and final inspections as necessary.

Other work performed during the quarter :

- The Linear Manual was presented to the public, final comments were received and the final draft will be distributed in January.
- The Roger Williams Park project is ready for Spring 2019 construction
- The inventory project has mapped and identified over 34,000 catch basins Statewide too date. A total of 79,909 total drainage assets have been identified.
- IDDE investigations were performed in Coventry, Newport and Johnston.
- The partnership with WRWC continues and a draft agreement has been prepared for the State Conservation Commission. A presentation was made to Save the Bay and daffodils were planted along the Airport Connector and plans have been prepared to begin planting pollinator-friendly habitat along numerous State roads in 2019.

Financials

Expenditures

Actual operating expenditures totaled \$136 million in SFY18, \$30 million in Q2 SFY19, and \$60 million YTD for SFY19.

Operating Expenditures Detail (Actuals)

(In Thousands)	SFY18	SFY19Q1	SFY19Q2	FY19 YTD
<u>Administrative</u>				
In-house Labor	\$ 29,605	\$ 7,003	\$ 6,538	\$ 13,541
Overhead Recovery	\$ (18,303)	\$ (5,213)	\$ (4,719)	\$ (9,932)
Consultant Contracts	\$ 1,164	\$ 370	\$ 454	\$ 824
Miscellaneous (Admin)	\$ 1,451	\$ 389	\$ 279	\$ 668
Pass Throughs	\$ 720	\$ 816	\$ -	\$ 816
Total Administrative	\$ 14,637	\$ 3,365	\$ 2,552	\$ 5,917
<u>Highway Maintenance**</u>				
In-house Labor	\$ 30,772	\$ 9,367	\$ 8,590	\$ 17,957
Overhead Costs	\$ 2,669	\$ 669	\$ 593	\$ 1,262
Consultant Contracts	\$ 23,248	\$ 5,003	\$ 4,822	\$ 9,825
Construction Contracts	\$ 2,627	\$ 1,626	\$ 782	\$ 2,408
Miscellaneous (Highway Maint.)	\$ 22,047	\$ 2,780	\$ 5,043	\$ 7,823
Pass Throughs	\$ 1,464	\$ 947	\$ 425	\$ 1,372
Total Highway Maintenance	\$ 82,827	\$ 20,392	\$ 20,255	\$ 40,647
<u>Safety</u>				
In-house Labor	\$ 436	\$ 131	\$ 140	\$ 271
Overhead Costs	\$ 298	\$ 82	\$ 85	\$ 167
Consultant Contracts	\$ 1,271	\$ 334	\$ 648	\$ 982
Miscellaneous (Safety)	\$ 128	\$ 30	\$ 35	\$ 65
Pass Throughs	\$ 2,467	\$ 667	\$ 807	\$ 1,474
Total Safety	\$ 4,600	\$ 1,244	\$ 1,715	\$ 2,959
<u>Transit Operations</u>				
Transit Operations	\$ 9,345	\$ 5,069	\$ 3,391	\$ 8,460
Total Transit Operations	\$ 9,345	\$ 5,069	\$ 3,391	\$ 8,460
<u>Winter Operations</u>				
In-house Labor	\$ 2,681	\$ -	\$ 469	\$ 469
Miscellaneous (Winter)	\$ 15,115	\$ -	\$ 1,598	\$ 1,598
Total Winter Operations	\$ 17,796	\$ -	\$ 2,067	\$ 2,067
<u>Emergency Repair Projects***</u>				
In-house Labor	\$ 678	\$ 19	\$ 6	\$ 25
Overhead Costs	\$ 6	\$ -	\$ -	\$ -
Consultant Contracts	\$ 484	\$ 3	\$ 6	\$ 9
Construction Contracts	\$ 4,973	\$ 130	\$ 73	\$ 203
Miscellaneous (Emergency)	\$ 400	\$ 33	\$ 7	\$ 40
Total Emergency Repair Project:	\$ 6,541	\$ 185	\$ 92	\$ 277
Total Operating Expenditures	\$ 135,746	\$ 30,255	\$ 30,072	\$ 60,327

*Expenditures derived from RIDOT's Oracle Financial Management System

**Includes bridge inspection, striping, crack sealing and chip sealing

***Expenditures directly related to emergency projects were not tracked separately until the 3rd Qtr of SFY16. Prior to that the expenditures for emergency projects were reported within the capital projects section.

Expenditures

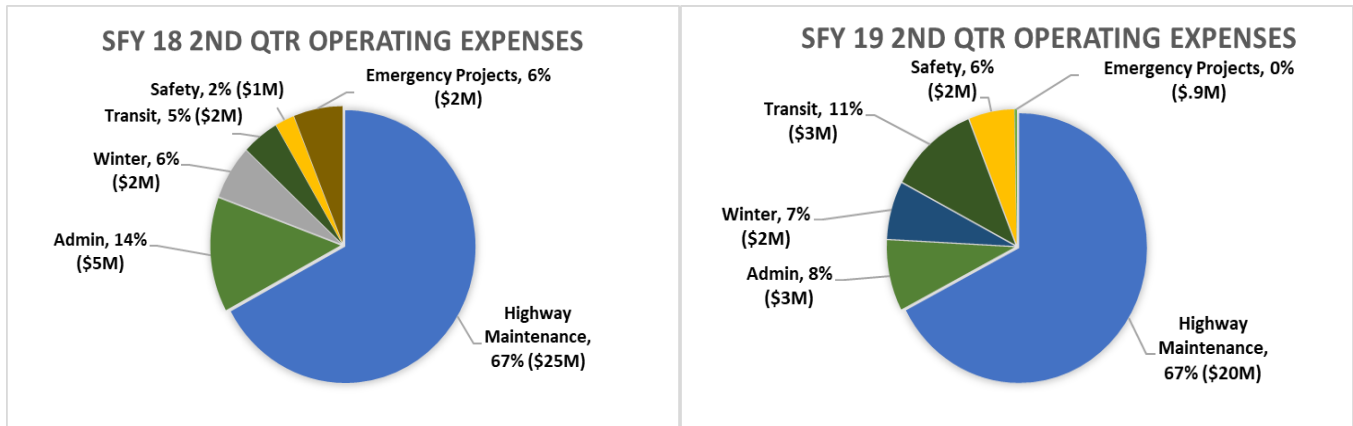
Actual capital expenditures totaled \$337 million in SFY18, \$112 million in Q2 SFY19, and \$231 million YTD for SFY19.

Capital Expenditures Detail (Actuals)

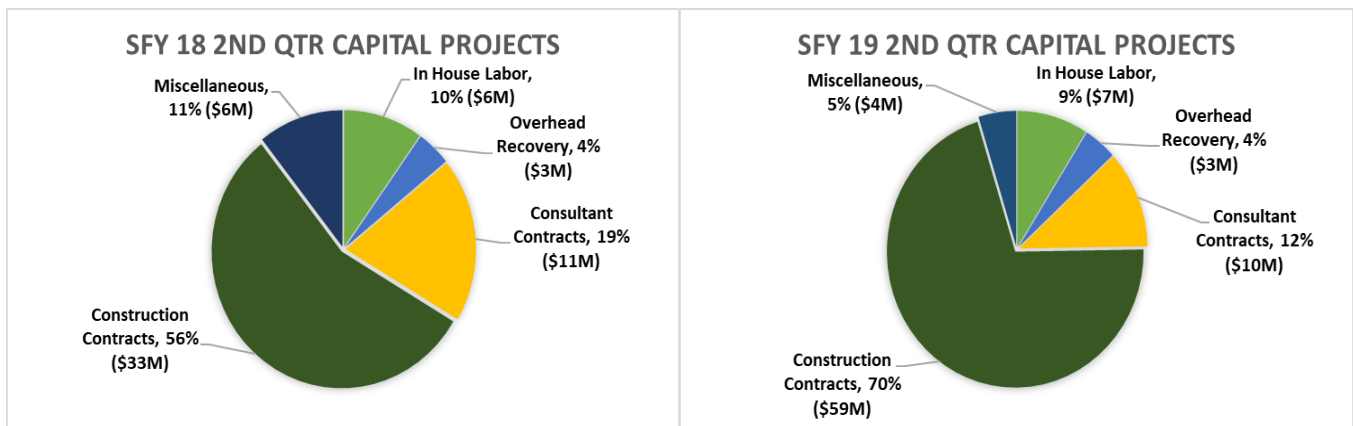
(In Thousands)	SFY18	SFY19Q1	SFY19Q2	FY19 YTD
<u>Debt</u>				
Debt	\$ 71,109	\$ 12,082	\$ 24,335	\$ 36,417
Total Debt Service	\$ 71,109	\$ 12,082	\$ 24,335	\$ 36,417
<u>Planning</u>				
In House Labor	\$ 3,370	\$ 1,198	\$ 1,109	\$ 2,307
Overhead Recovery	\$ 2,146	\$ 596	\$ 549	\$ 1,145
Consultant Contracts	\$ 1,022	\$ 123	\$ 101	\$ 224
Miscellaneous (Planning)	\$ 1,322	\$ 386	\$ 363	\$ 749
Total Planning	\$ 7,860	\$ 2,303	\$ 2,122	\$ 4,425
<u>Capital Projects</u>				
In House Labor	\$ 22,309	\$ 8,029	\$ 7,488	\$ 15,517
Overhead Recovery	\$ 13,182	\$ 3,866	\$ 3,492	\$ 7,358
Consultant Contracts	\$ 39,737	\$ 10,639	\$ 9,695	\$ 20,334
Construction Contracts	\$ 157,477	\$ 73,650	\$ 58,916	\$ 132,566
Miscellaneous (Capital Projects)	\$ 15,639	\$ 4,372	\$ 3,985	\$ 8,357
Total Capital Projects	\$ 248,344	\$ 100,556	\$ 83,576	\$ 184,132
<u>Capital Pass Throughs</u>				
Pass Throughs	\$ 9,325	\$ 4,339	\$ 2,040	\$ 6,379
Total Capital Pass Throughs	\$ 9,325	\$ 4,339	\$ 2,040	\$ 6,379
Total Capital Expenditures	\$ 336,638	\$ 119,280	\$ 112,073	\$ 231,353
Total RIDOT Expenditures	\$ 472,384	\$ 149,535	\$ 142,145	\$ 291,680

Expenditures

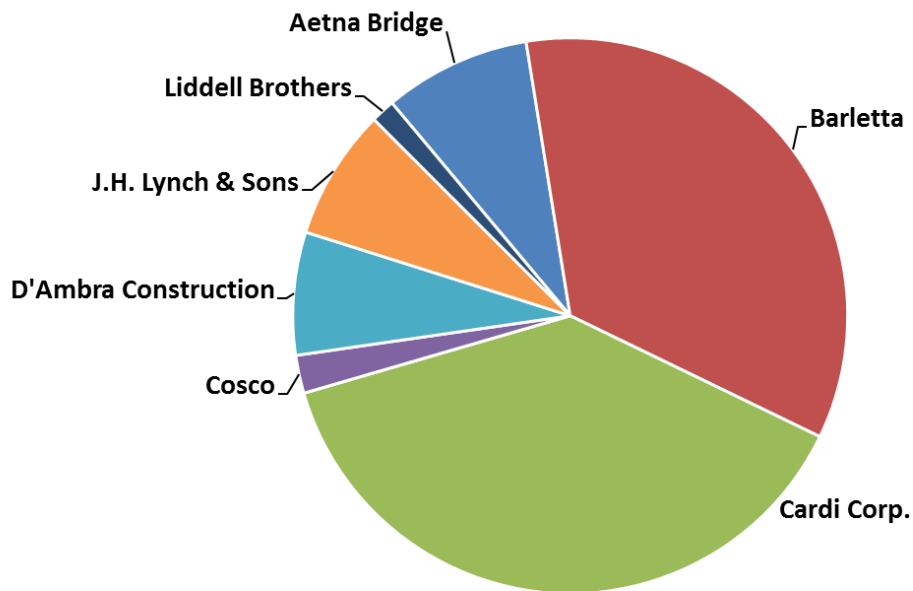
OPERATING EXPENDITURES: Operating expenditures are costs associated with the day-to-day operations of RIDOT. These costs include Highway Maintenance, Safety Programs, Administrative Expenses, Winter Operations, and Commuter Rail expenses.



CAPITAL EXPENDITURES: Capital expenditures include design, construction and oversight costs associated with capital projects, expenditures to plan capital projects and debt service on capital debt. Some operating expenditures associated with RIDOT overhead are also billed to capital projects. Capital costs other than those allocated to the construction contracts are considered “soft costs.” RIDOT’s 10 Year Plan calls for the reduction of soft costs over time to bring this portion of capital expenditures down to industry standards through the implementation of project management.



FFY 2018 (October 2018 - December 2018)*



Contractor	No. of Contracts	Total Value Awarded (In Millions)
Aetna Bridge	2	\$8.830
Barletta	1	\$35.796
Cardi Corp.	9	\$39.525
Cosco	1	\$2.285
D'Ambra Construction	1	\$7.373
J.H. Lynch & Sons	4	\$7.856
Liddell Brothers	2	\$1.445
Totals	20	\$103.110

*Chart contains only contractors awarded over \$500,000 in construction contracts as of December 31, 2018.

Glossary

Date Conventions:

CY: Calendar Year (January 1 – December 31)

FFY: Federal Fiscal Year (October 1 – September 30)

SFY: State Fiscal Year (July 1 – June 30)

Safety Information is collected and reported on a calendar year (**CY**) basis

Financial Information is reported on a State Fiscal Year (**SFY**) basis

All other information is reported on a Federal Fiscal Year (**FFY**) basis

Technical Definitions:

Emergency Awards: The Department occasionally faces the need for urgent response to certain situations. As defined by State Purchasing Regulations (9.6.2), an emergency is defined as follows: “An emergency shall mean a situation to which an urgent response is required. Immediate dangers to health and safety, threats to property and necessary functions, and failures of critical equipment constitute emergencies”

Advertise: The date of the public notice of the invitation for bids or request for proposals, typically posted on the State Purchasing’s website

At NTP: Notice to Proceed occurs when a Purchase Order is provided by the Owner to the Contractor authorizing work to begin

Substantial Completion: Substantial completion is reached when the work is completed so it can be safely and effectively used by the public. This may include the entire Project or a unit, or portion of the work such as a structure, an interchange, or section of road or pavement

Final Completion: Final completion is reached when all contract work is completed, including punchlist work, and all certifications have been received by the Department

LTD: Life to Date

Change Orders: A written order to the Contractor covering contingencies, extra work, increases or decreases in contract quantities, and additions or alterations to the plans or specifications within the scope of the contract, and establishing the basis of payment and time adjustments for the work affected by said change

Industry Definitions:

NHTSA: National Highway Traffic and Safety Administration

OHS: Office of Highway Safety

FARS: The Fatality Analysis Reporting System is a nationwide census providing NHTSA, Congress and the American public yearly data regarding fatal injuries suffered in motor vehicle traffic crashes

Pass throughs: Capital pass through expenditures are costs that are not directly related to capital projects but instead passed on to other entities such as other State agencies or local cities and towns for capital related costs

CMAQ: Congestion Mitigation and Air Quality

NBI: National Bridge Inventory; the Federal Highway Administration identifies bridges that are greater than 20ft and used for vehicular traffic.

NHS: National Highway System is a network of strategic highways with the US, including the Interstate Highway System and other roads service major airports, ports, rail or truck terminals, railway stations, pipeline terminals and other strategic transport facilities.

RIDOT System Quick Facts



1,178

Bridges (5+ feet) as of 12/31/18



More than

3,000

Lane miles of road



5 rail stations

18 park and rides



104,000

Traffic devices



34,000

Catch basins (approximate)



695

Total employees

(as of 12/31/18)