

Bridge: 066201
Photo: 1

7/5/2022



(Girder A)

(Girder AA)

(Pier 1)

North elevation of Span 1, looking south.

Bridge: 066201
Photo: 2

7/5/2022

(Girder D)

(Pier 1)

South elevation of Span 1, looking north.



Bridge: 066201
Photo: 3

7/5/2022

(Girder A)

(Girder D)

(Pier 1)

Typical view of the underside of the bridge, Span 1 shown, looking east.



Bridge: 066201
Photo: 4

7/5/2022



Section loss, down to 1/4" remaining x remaining height x full length.

Section loss, 3" high x full width x 1/4" to 3/8" remaining

Section loss, 1/4" to 1/8" remaining x 4" high x 13" long

Section loss, 1/8" deep x 1" high x 2" long

Bottom flange section loss, down to 1/8" remaining x full width x full length

North face of Girder AA in Span 1 at Abutment 1, looking south.

Bridge: 066201
Photo: 5

7/5/2022

Efflorescence

Peeling paint with light
to moderate rust

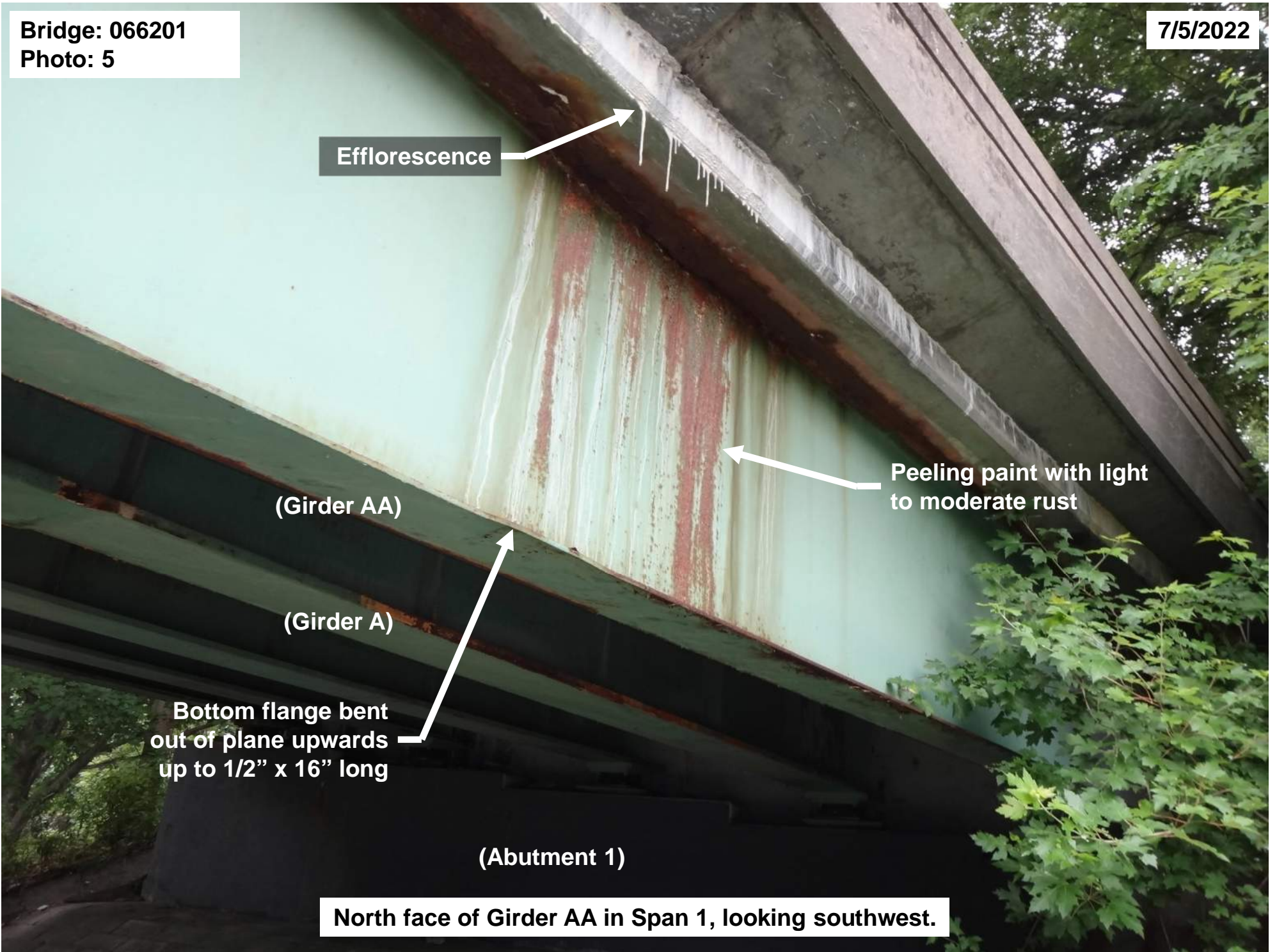
(Girder AA)

(Girder A)

Bottom flange bent
out of plane upwards
up to 1/2" x 16" long

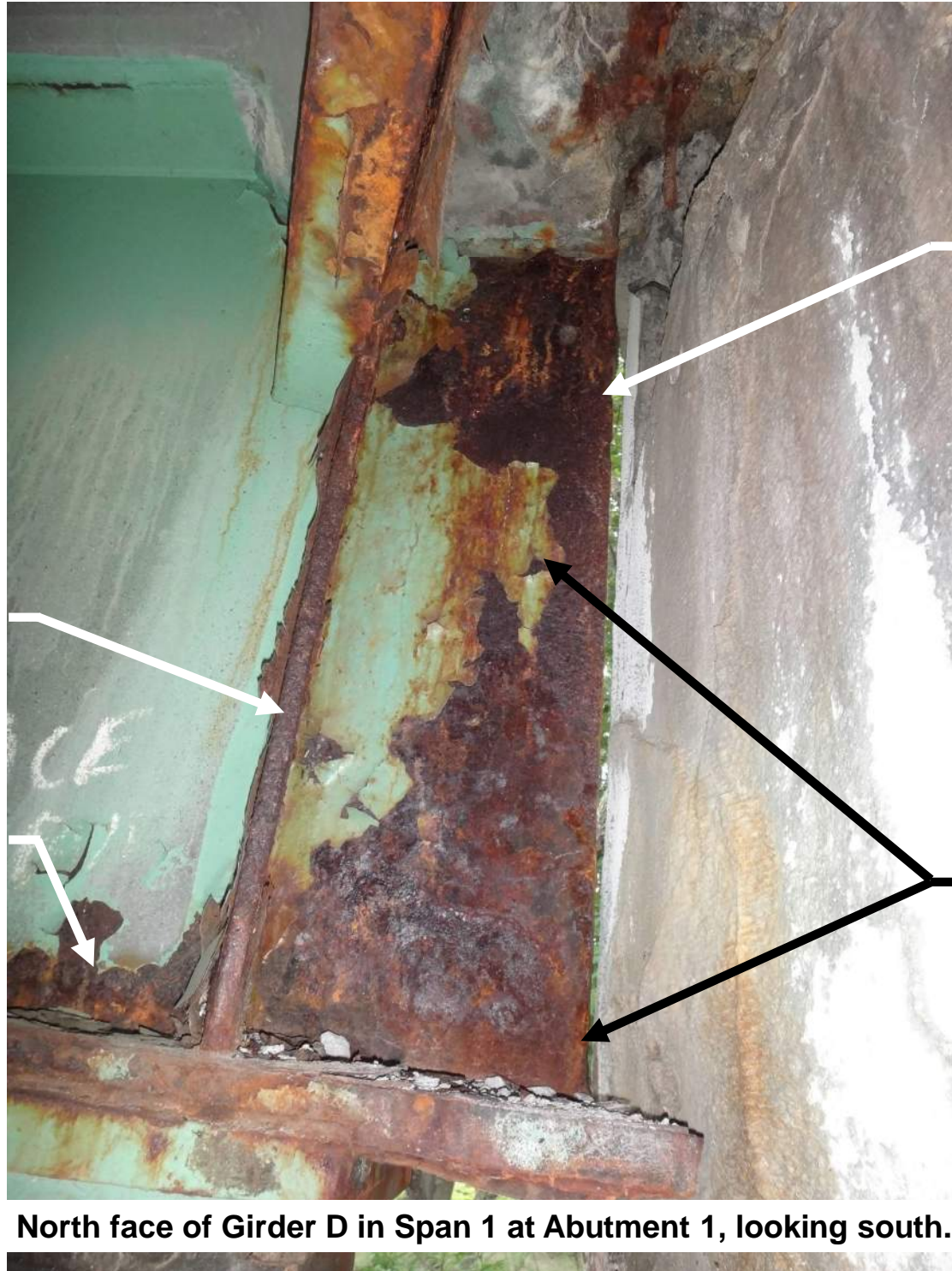
(Abutment 1)

North face of Girder AA in Span 1, looking southwest.



Bridge: 066201
Photo: 6

7/5/2022



Section loss, down to
1/4" remaining x full
height x full width
(bearing stiffener)

Section loss, 1/4"
remaining x 17" high x
up to 6" long

Section loss, 1/16"
to 1/8" deep x 3"
high x 12" long

Section loss, 1/16" to
1/8" deep x remaining
height x full length

North face of Girder D in Span 1 at Abutment 1, looking south.

Bridge: 066201
Photo: 7

7/5/2022

Section loss, 1/4"
remaining x 17" high x
up to 6" long

3/8" avg. remaining
thickness

Section loss, 1/8" deep x
4" high x full length

Section loss, up to 1/8"
deep x 5" high x 15" long



South face of Girder D in Span 1 at Abutment 1, looking north.

Bridge: 066201
Photo: 8

(Girder A,
Span 1)

8/23/2022

(Girder A,
Span 2)

1/2" avg. remaining x
full length x full height

Web down to 5/16"
remaining x full
length x full height

1/4" remaining x full
length x 10" high

Bearing stiffener, 1/2"
remaining x up to full
width x 12" high

Base of web, 1/8"
remaining x 7"
high x 10" long

1/4" deep section loss
x 4" high x 4" long

South face of Girder A at Pier 1, looking north.



Bridge: 066201
Photo: 9

8/23/2022

(Girder B,
Span 2)

(Girder B,
Span 1)

Section loss, 1/4" deep
down to 100% loss x
6" high x 8" long

Hole, 8" long x 4" high
with web crippled 1/2"
out-of-plane x 3" high
x full length

Heavy rust

Bearing stiffener,
1/2" remaining x
3" high x 3" wide.

North face of Girder B in Span 1 at Pier 1, looking south.



Bridge: 066201
Photo: 10

8/23/2022



South face of Girder B in Span 1 at Pier 1, looking north.

Bridge: 066201
Photo: 11

8/23/2022



Bridge: 066201
Photo: 12

8/23/2022



(Girder C,
Span 1)

(Girder C,
Span 2)

Section loss, 1/4"
remaining x 7" high x
full length

Hole, 2" high x full
length

Web down to 3/16"
remaining x full
height x full length

South face of Girder C in Span 1 at Pier 1, looking north.

Bridge: 066201
Photo: 13

8/23/2022

(Girder D,
Span 1)

1/4" remaining x full
height x full length

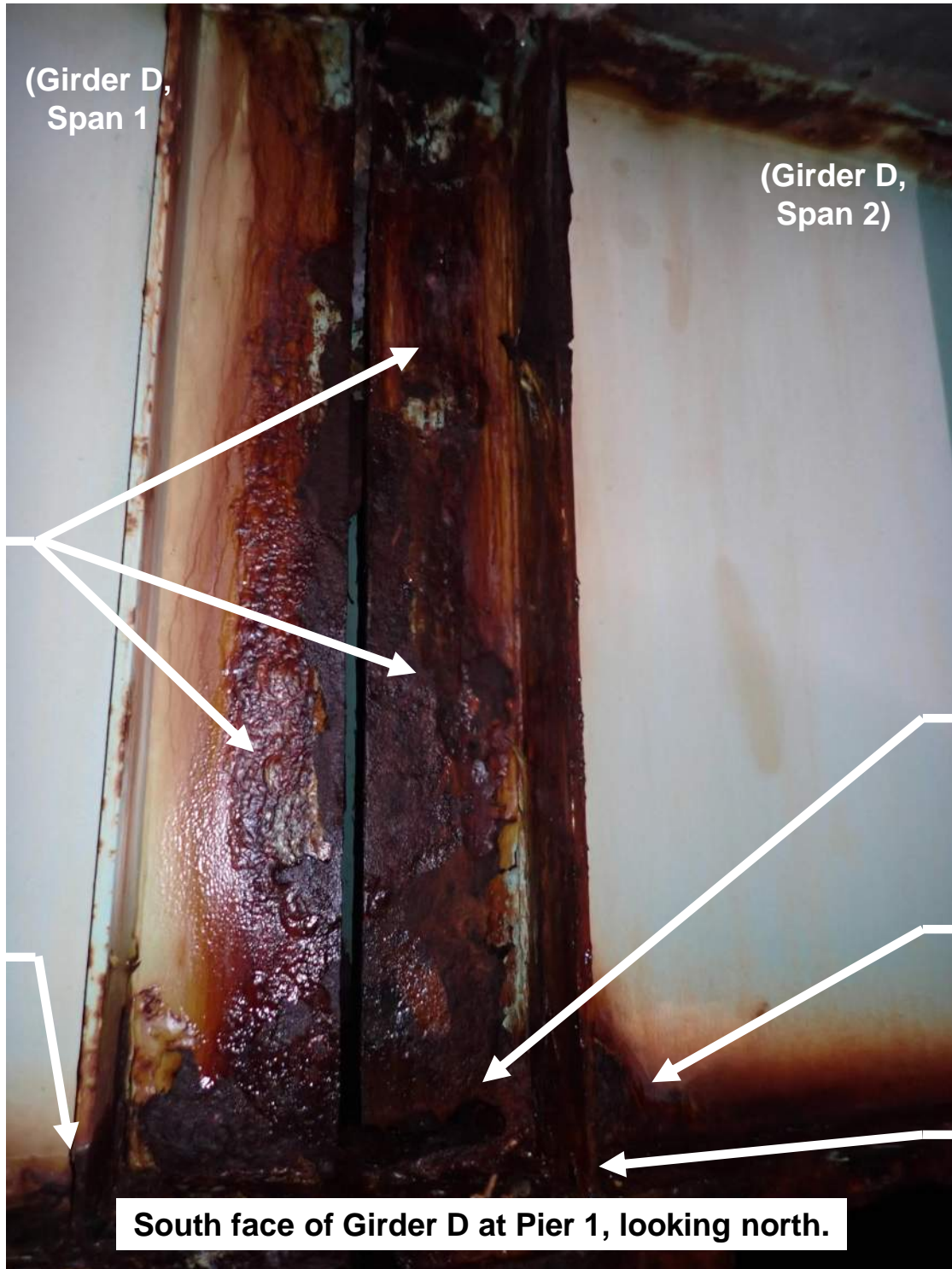
Section loss, 1/8" deep
x 5" high x 2'-0" long

Bearing stiffener, 5/16"
remaining x 4" high x
full width (1/2"
remaining height)

North face of Girder D in Span 1 at Pier 1, looking south.

Bridge: 066201
Photo: 14

8/23/2022



Bridge: 066201
Photo: 15

8/23/2022



(Girder A,
Span 2)

Web down to 5/16"
remaining x full length
x full height

(Girder A,
Span 1)

1/8" remaining x 7"
high x 10" long

1/16" section loss x 4"
high x 4'-0" long over
1/4" section loss 3"
high x 4'-0" long

1/2" remaining x 16"
high x full width
(bearing stiffener)

100% section loss to
lateral bracing at
connection to girder

South face of Girder A in Span 2 at Pier 1, looking north.

Bridge: 066201
Photo: 16

8/23/2022



(Girder B,
Span 2)

(Girder B,
Span 1)

Down to 3/16"
remaining x full height
x full length

Multiple up to 2" high
x 1" long holes within
area 20" high x 5" long

Hole, 5" high x 9" long

North face of Girder B in Span 2 at Pier 1, looking south.

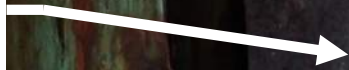
Bridge: 066201
Photo: 17

8/23/2022

(Girder B,
Span 1)

(Girder B,
Span 2)

Down to 3/16"
remaining x full height
x full length



Multiple up to 2" high
x 1" long holes within
area 20" high x 5" long



Hole, 5" high x 9" long



South face of Girder B in Span 2 at Pier 1, looking north.



Bridge: 066201
Photo: 18

8/23/2022



(Girder C,
Span 1)

(Girder C,
Span 2)

Section loss, 3/16"
remaining x full height
x full length

Hole, 1/2" Ø

Hole, 2-1/2" high
x 8" long

South face of Girder C in Span 2 at Pier 1, looking north.

Bridge: 066201
Photo: 19

8/23/2022

(Girder D,
Span 2)

(Girder D,
Span 1)

1/4" remaining x full
height x full length

1/4" remaining x full
height x full length

Hole, 2-1/2" high
x 9" long

North face of Girder D in Span 2 at Pier 1, looking south.

