

DRIVING UNDER THE INFLUENCE

In Rhode Island



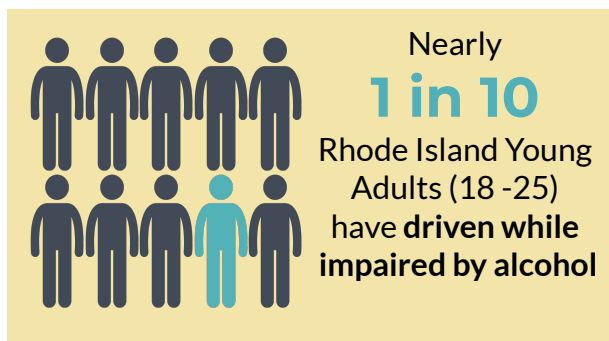
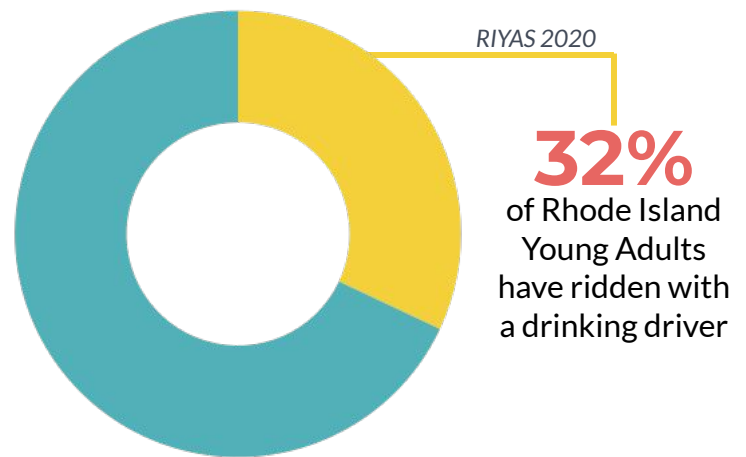
BHDDH & RI DoT | April 2022

AN OVERVIEW: DRIVING UNDER THE INFLUENCE

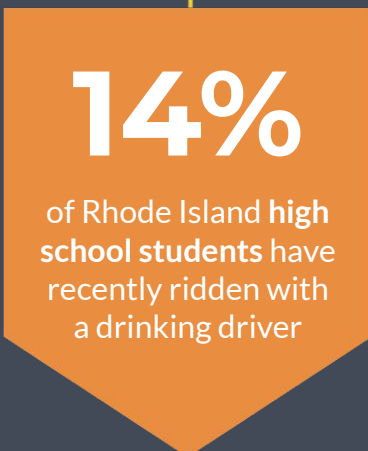
From 2009 - 2018, 247 people in Rhode Island were killed from alcohol-related accidents.¹ While alcohol is the most commonly talked about, driving under the influence (DUI) of any mind altering substance is dangerous and can result in death. Legal definitions of DUI vary slightly in each state, but generally, DUI means:

*Operating a motor vehicle while impaired by alcohol, drugs such as marijuana, or other medication.*²

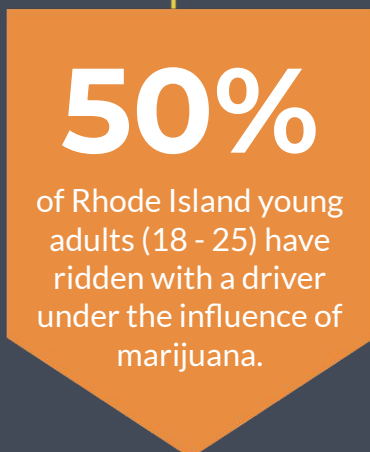
COMMON AND DANGEROUS: DRINKING AND DRIVING



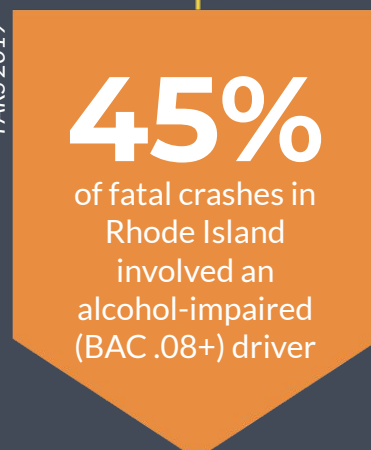
YRBSS 2019



RIYAS 2020



FARS 2019



A PROBLEM IN RI: DUI COMPARISONS

Policy Impact

RI has significantly worse DUI rates compared to the nation. To decrease the rate of DUIs, RI should

- Legalize sobriety checkpoints
- Expedite warrant for suspected drunk drivers who refuse to test
- Require ignition interlocks or criminalize refusing an alcohol test

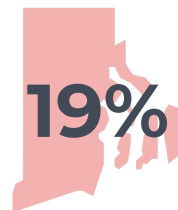
3

In the United States

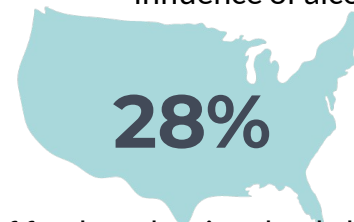


VS

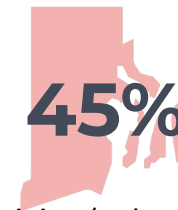
In the Rhode Island



of drivers who were involved in fatal crashes were under the influence of alcohol, drugs, of medication



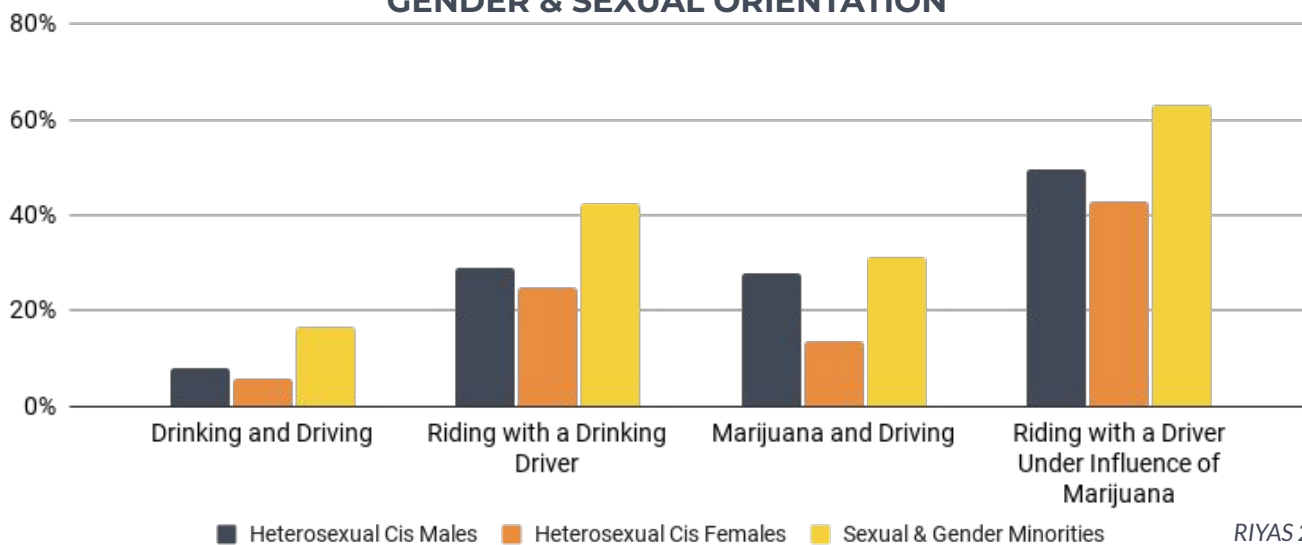
VS



of fatal crashes involved alcohol-impaired driving (at least one driver with a BAC .08+)

FARS 2019

DUI BEHAVIORS OF RHODE ISLAND YOUNG ADULTS (18-25) BY GENDER & SEXUAL ORIENTATION



RIYAS 2020

DATA SOURCES

Youth Risk Behavior Surveillance System (YRBSS): A representative sample of high school students.

Fatality Analysis Reporting System (FARS): A nationwide census of fatal injuries suffered in motor vehicle crashes.

Rhode Island Young Adult Survey (RIYAS): A large convenience sample of 18-25 year olds residing in Rhode Island.

REFERENCES

1. Center for Disease Control. Sobering Facts: Drinking Impaired Driving in Rhode Island. U.S. Department of Health & Human Services. 2020 July. <https://www.cdc.gov/transportationsafety/pdf/impaired-driving-new/CDC-impaired-driving-fact-sheet-Rhodelsland.pdf>
2. Center for Disease Control. Impaired Driving. U.S. Department of Health & Human Services. 2020 December. https://www.cdc.gov/transportationsafety/impaired_driving/index.html
3. Mothers Against Drunk Driving. 2019 Report to the Nation. 2019 December. <https://www.madd.org/state-statistics-2>

Created by the State Epidemiological Outcomes Workgroup (SEOW) on behalf of the Rhode Island Department of Behavioral Healthcare, Developmental Disabilities and Hospitals (BHDDH).